

IN THIS ISSUE

City Holds Affordable Housing Informational Meeting 4



Bruce Meyer Addresses Rotary Club of Beverly Hills 5



How to Give Back This Valentine's Weekend and Beyond 6



Courier Calendar 2

News 4

The Scene 6

Community 9

Police Blotter 11

Birthdays 12

Fun and Games 13

Public Notices 14

Classifieds 17

THE WEATHER, BEVERLY HILLS CA

☀️ Friday	62° 47°
☁️ Saturday	65° 48°
☀️ Sunday	68° 48°
☁️ Monday	64° 49°
☀️ Tuesday	66° 50°
☁️ Wednesday	68° 52°
☀️ Thursday	71° 53°

BHUSD Board Meeting Addresses E-Vehicles, Summer School, Racism Allegations and Media Director



BY JESSICA OGILVIE

The Beverly Hills Unified School District (BHUSD) board discussed policies for electric vehicles, summer school and other topics at its Feb. 10 meeting. During public comment, the board also heard from distressed parents

and students about racial discrimination and a teacher on leave.

The board discussed a new BHUSD policy drafted by the district under the guidance of the Beverly Hills Police Department that would establish safety guidelines for
See BHUSD, page 3

UCLA Suspends Two Pro-Palestinian Student Groups

BY SEAN BECKNER-CARMITCHEL

After a protest outside University of California Regent Jay Sures' Brentwood home on Feb 5, two pro-Palestine student organizations have been leveled with an interim suspension by the UCLA Office of Student Conduct.

On Feb 5, Sures' home was the target of a protest in the early morning. Video on social media shows protesters holding large banners reading "disclose, divest, we will not stop, we will not rest," and "Jonathan Sures, you will pay until you see your final day." Los Angeles Police Department officers arrived there while protesters chanted, and some officers carried "less lethal" munitions.

Red handprints were reportedly left on Sures' garage door at some point during the protest. According to a statement by UCLA Chancellor Julio Frenk, "Individuals surrounded the vehicle of a Sures family member and prevented that family member's free movement."

The student organizations, Students for Justice in Palestine (SJP) and Graduate Students for Justice in Palestine (GSJP) were
See UCLA, page 3

City Council Agrees to Metro Road Closures

BY SELINA KAUSAR

At the Feb. 5 City Council Regular Meeting, the council reviewed and decided upon several Metro requests. These requests will help safely expedite deck removal work at Purple Line Section 2—Wilshire/Rodeo Station, accelerate street restoration of Wilshire Boulevard between El Camino Drive and Crescent Drive and complete the project by 2025 rather than the first quarter of 2026 as was originally intended. The council also voted in an urgency ordinance relating to price gouging, which includes the recent price cap removal for rental units issued by Governor Gavin Newsom on Feb 4.

With regards to the Metro requests, the council agreed to a three-week full closure of Wilshire Boulevard from March 17 to



Photo by Selina Kausar

The Wilshire/Rodeo Metro station under construction

April 7, instead of 18 continuous weekends of closures outlined in the Memorandum of Agreement (MOA). There is an option to negotiate three additional weekend closures if outstanding work remains to be completed
See CITY COUNCIL, page 3

Finding Light in the Dark: Why It's Important to Feel Joy During Troubling Times

BY EVA RITVO, M.D.

"How are you?" This simple question is becoming increasingly complicated. How do you answer when the world feels like a rollercoaster of extremes—tragedies strike, and moments of joy seem fleeting or even contradictory to the suffering of others? As this year unfolds, we've witnessed a mix of heartache, from wildfires to political change, while also experiencing uplifting moments like the Grammys, FireAid, and the Super
See HEALTH, page 8

Happy Valentine's Day
Award-Winning BEVERLY HILLS COURIER

Courier Calendar

NOW - MARCH 2

ICA LA: "AN INCESSANT UNKNOWABILITY: AN ARCHIVE OF PROTEST INSPIRED TYPOGRAPHY AND ITS OPEN SOURCE USES"

WED., FRI. 12-6 P.M.

THURS. 12-7 P.M.

SAT.-SUN. 11-6 P.M.

"An Incessant Unknowability: An Archive of Protest Inspired Typography and Its Open Source Uses" is an exhibition created for ICA LA's Annex gallery in conjunction with the Bookshelf Residency with GenderFail. The installation is based entirely on a publication of the same name in early 2024 by GenderFail. It presents the ongoing series of open-source fonts sourced from and inspired by protest signs of events since the Stonewall Riots in 1969. This exhibition features 12 risograph printed font specimen posters to showcase 10 protest fonts created since 2018. Twenty-five open-source work examples printed exclusively for this exhibition are also featured. These works thematically and broadly fit into four categories: personal, collective, institutional and protest. All featured works were created by others using the open-source permission model, which allows participants to use these open-source fonts freely for their own personal, fundraising or for-profit purposes. ICA LA is located at 1717 E. 7th St., Los Angeles. Admission to ICA LA is free with advanced reservations recommended. theicala.org

NOW - MARCH 9

GEFFEN PLAYHOUSE: "NOISES OFF" 2 P.M., 3 P.M., 7 P.M., 8 P.M.

Geffen Playhouse presents "Noises Off," where doors slam, sardines fly and trousers drop in Michael Frayn's side-splitting British farce about a theater company desperately trying to

get their act together. Both onstage and backstage, chaos reigns for a troupe of floundering actors whose forgotten lines, misplaced props and steamy romantic entanglements make it nearly impossible for the show to go on. An uproarious love letter to the theater, "Noises Off" is a peek behind the curtain—where everything that can go wrong, does. Tickets range from \$36-\$155. Geffen Playhouse is located at 10886 Le Conte Ave., Los Angeles. geffenplayhouse.org

NOW - MARCH 9

ROGUE MACHINE THEATRE: "EVANSTON SALT COSTS CLIMBING" MON., FRI., SAT. 8 P.M.

SUN. 3 P.M.

Rogue Machine Theatre presents the Southern California premiere of "Evanston Salt Costs Climbing," a play written by Will Arbery, directed by Guillermo Cienfuegos and starring Hugo Armstrong, Lesley Fera, Kaia Gerber and Michael Redfield. Winters keep getting worse in Evanston, Illinois, where salt truck drivers Peter and Basil battle the ice and snow and pass the time with jokes and stories. But what's with this creeping sense of dread? Is it because their boss, Maiworm, has noble visions of new green technology that would make their jobs obsolete? Or is there a more terrifying warning calling out from under these roads? At least they have each other, right? Pulitzer Prize finalist Will Arbery confronts humanity's darkest fears with humor, warmth and the fortitude of municipal public servants in this play about climate and change. Check the website for additional performances and dates. Rogue Machine is located at The Matrix Theatre, 7657 Melrose Avenue, Los Angeles. roguemachinetheatre.org

NOW - MAY 4

MOCA GRAND AVENUE: "ORDINARY PEOPLE: PHOTOREALISM AND THE WORK OF ART SINCE 1968" TUES., WED., FRI. 11 A.M.-5 P.M. THURS. 11 A.M.-8 P.M. SAT.-SUN. 11 A.M.-6 P.M.

Reexamining the postwar art movement of photorealism and tracing its lineages in art of the present day, "Ordinary People: Photorealism and the Work of Art since 1968" includes more than 40 artists (largely though not exclusively North American), spans the 1960s to the present, and features paintings, drawings and sculptures. "Ordinary People" examines the representational politics of photorealist painting in the context of the recent rise of figurative portraiture, considering its key place in the ongoing remedial project to repopulate the museum with pictures of people and places historically excluded or disfigured. It further explores photorealism's significance as painting of everyday life, and pulls apart the intrinsic tension between ordinary images and extraordinary artistic methods by focusing on relationships of labor, value, populism and taste. General admission to MOCA is free. MOCA Grand Avenue is located at 250 S. Grand Ave., Los Angeles. moca.org

FEB. 21

THE WALLIS: "ILE" 7:30 P.M.

From her roots as the powerhouse vocalist of "Calle 13" to her Grammy-winning solo career, iLe brings a mesmerizing blend of traditional Latin rhythms and cutting-edge electronic sounds to The Wallis. Her debut album, "iLevitable," was hailed as an instant classic, while "Almadura" pushed boundaries, fusing ancestral

beats with modern digital landscapes. With her latest release, "Nacarile," iLe delves even deeper into her creative well, collaborating with luminaries like Mon Laferte and Ivy Queen. Guests are invited for an unforgettable evening of music that transcends boundaries and speaks to the soul. Tickets start at \$38.50. The Wallis is located at 9390 N. Santa Monica Blvd. thewallis.org

FEB. 23

HOLOCAUST MUSEUM LA: "BOOK TALK: 'A BLESSING, NOT A BURDEN'" 3-4:30 P.M.

By all accounts, Dr. Alex Kor's life has been a miracle. The son of two Holocaust survivors who narrowly escaped death, Alex grew up in Indiana—a state with Midwestern charm and an ignominious history of prejudice. In "A Blessing, Not a Burden," Alex details his incredible journey, from his unique upbringing to his present-day mission of carrying on his parents' inspiring legacy. From his mother's controversial stance on forgiving the Nazis to his father's unbridled optimism, Alex shares life lessons that have helped him overcome his own hardships along the way. Alex also offers his own perspective on forgiveness as he nurtures his parents' legacies in a world still fraught with discrimination. He's traveled a long and winding road, from Terre Haute, Indiana, to Auschwitz and many places in between and like his parents, he has endured and overcome. As antisemitism festers across the globe, "A Blessing, Not a Burden" takes readers back to one of the most horrific periods in human history, and is a reminder of the terrible costs of hate and warning that humanity is not so far removed from those dangers as some may think. Yet, at the same time, the story of the Kor family stands as a living memorial to the belief that the human spirit can overcome even the darkest of circumstances. Tickets to this talk are free with RSVP available online. Holocaust Museum LA is located at 100 The Grove Dr., Los Angeles. holocaustmuseumla.org

FEB. 24

THEATRE 40: MONDAY NIGHT THEATRE APPRECIATION SEMINAR: "CROSSING DELANCEY" 7 P.M.

Theatre 40's popular series of Monday Night Theatre Appreciation Seminars resumes. There will be play readings on Mondays, located in Theatre 40's main venue, the Mary Levin Cutler Theatre on the first floor of 241 S. Moreno Drive, Beverly Hills. The next installment of the series is "Crossing Delancey," by Susan Sandler. The play focuses upon Izzy, who wants to choose her own romantic partner. Her Bubbie thinks she needs the help of a professional matchmaker. Admission is a suggested donation of \$10. Each reading will be followed by a brief question-and-answer period. theatre40.org



Photo courtesy of the artist and The Wallis

iLe performs at The Wallis on Feb. 21.



Photo by ralvarez201@gmail.com/depositphotos.com

UCLA, from page 1

suspended based on a review of initial reports about the groups' involvement in the incident, said Frenk's statement.

After the protest, SJP released a now-deleted statement on Instagram that the protest was due to the UC's Board of Regents not working with pro-Palestinian demonstrators to divest funding and investment from Israel. It read in part that university officials "have repeatedly kicked us out of their meetings,

anceled forums for public comment, and criminalized our attempts to protest investment policies. We have taken our issues straight to the Regents because they have systematically militarized our campus in response. Over the last eight months, Jay Sures has led the UC's efforts in suppressing pro-Palestine speech and expression on campus, including through increased militarization and draconian [time, place and manner] policies."

BHUSD, from page 1

electric vehicles, including bicycles, scooters, skateboards and "any similar motorized or electric-powered vehicles."

Under the policy, which would apply to students, staff and community members, such items would be permitted only for transportation to and from school. The school would not be responsible for damage or theft.

During the discussion period, board members expressed apprehension over appearing to promote electric vehicles to students as young as 11.

"My first concern is we're legitimizing people without driver's licenses, minors—not all minors but 15 and younger—their use of a motorized vehicle," said Board Member Judy Manouchehri. "I'm concerned that we are treating the high schoolers and the middle schoolers the same. We have middle schoolers that are 11 years old, and we have high schoolers that are 18."

Board Member Russell Stuart expressed doubts about avoiding liability.

"I live on Bedford, and I cannot tell you how many kids ... have flown through my stop sign at Gregory at Bedford, doing a wheelie, filming themselves," he said. "You're going to get someone who comes on [school] property and rips through grass and possibly crashes into something, and God forbid it's a person, there's going to be liability. There's no way around it."

The discussion ended with the decision to table the issue for further board review.

The board also examined the district's summer school offerings during a presentation by Dustin Seemann, BHUSD assistant superintendent of education services. Seemann expressed optimism about the planned programming, but board members were less enthusiastic.

Manouchehri drilled down on the necessity of using summer school hours to bring elementary school students underperforming on standardized tests up to speed, emphasizing that many are not meeting the standards.

"We have a mission at BHUSD to be worthy of the dollars that our community has been giving us through taxpayers' money," she said. "We are missing the mark, and we need to put money towards getting our students educated," she said.

In response, Jason Hasty, the district's

assistant superintendent of business services, said the BHUSD is exploring the prospect of working with a vendor to offer more summer programming. Seemann offered to bring an idea of what that might look like to a future board meeting, to which the board agreed.

During the public comment segment of the meeting, eight parents and members of the community spoke about their deep concern for the board's perceived lack of action surrounding allegations of racism at Beverly Hills High School (BHHS). Black high school students have spoken out publicly (including at prior board meetings) about experiencing racial slurs, bullying and feeling intimidated and unsafe.

"You're on the school board because you care about children, I would assume," said a speaker who identified herself only as a community member. "If a community is telling you that their children feel attacked and hurt and daily denigrated and you do nothing to change that, what is your real purpose for being on the school board? I don't understand why it's OK."

Speakers then turned the conversation to the ongoing dispute over Romeo Carey, the district's media director who was put on leave in December 2024. Multiple speakers accused district employees of intimidating students who have spoken out in Carey's defense.

At least one female BHHS student referred to an investigation allegedly being conducted at the school.

"You are dragging students into private meetings, twisting stories and making outrageous accusations that have absolutely no basis in reality," said the student. "Asking female students if Mr. Carey has ever forced us to undress in KBEV? Do you even hear yourselves?"

When asked by the Courier to respond to the student comments about the investigation, Superintendent Dr. Michael Bregy said, "I listen very closely to the statements made during public comment and I am fully aware of the concerns and questions that have been raised. However, due to the confidential nature of personnel matters, we are unable to provide any details or comment at this time.

I want to emphasize that the safety and well-being of our students are our highest priorities. We remain committed to maintaining a secure and supportive environment where every student can learn, grow, and thrive." ●

Sures is Vice Chairman and Managing Director of the Beverly Hills-based United Talent Agency, which represents the Anti-Defamation League (ADL). On Feb 5, SJP and GSJP made a statement via social media condemning Sures' work with the ADL as well his work as a board member of the Los Angeles Police Foundation, Los Alamos National Laboratory and Lawrence Livermore National Laboratory. The post also stated that Sures "is one of the unelected officials responsible for protecting UC investments in genocide and weapons manufacturing."

Several days after the protest, the Jewish Federation Los Angeles (JFEDLA) released an open letter signed by hundreds of entertainment professionals, celebrities and Jewish religious leaders. Signatories included Jonathan Greenblatt, CEO of the ADL. The letter calls for "law enforcement and university officials to fully investigate this hateful incident and ensure that all those responsible are held accountable." It continues, "Furthermore, we urge local

elected officials and university leadership to unequivocally condemn the protesters' unlawful and antisemitic actions and reaffirm their commitment to protecting the safety and dignity of all individuals and groups, including the Jewish community."

Frenk announced the suspensions on Feb 12. An open letter to the Bruin community said in part, "The Office of Student Conduct is undertaking the standard process for addressing potential violations of UCLA's student group conduct code. It is conducting an administrative review, and this suspension will remain in effect during the review. If these reports prove true as part of this review, disciplinary action may be taken."

UCLA's suspension of SJP follows the same action taken at UC Santa Cruz, UC Irvine and UC San Diego. SJP chapters have also been suspended by several other universities across the country. During this suspension, the organizations cannot reserve space for meetings on campus or apply for funding for the student club. ●

CITY COUNCIL, from page 1

after the initial three weeks. Under these new measures, construction is expected to be completed by November 2025. The council also authorized a six-week closure of South Reeves Drive, starting at the end of this month, so Metro can safely remove structural supports extending into Reeves Drive before the deck panel removal at the Wilshire/Reeves intersection.

Under the MOA, Metro is prohibited from closing Wilshire Boulevard on holiday weekend dates. Metro has requested approval for a waiver of four holiday moratorium dates to allow work to continue during Presidents Day, Academy Awards, Mother's Day and Father's Day. The council denied this waiver to avoid imposing unnecessary burdens on residents, businesses and visitors during busy holiday weekends.

Following recent concerns regarding the city's existing regulations on price gouging during a state of emergency, an urgency ordinance to amend sections of the Beverly Hills Municipal Code relating to the prevention of price gouging was presented and adopted by the council. The Beverly Hills price gouging ordinance was last amended in 2007.

"Price gouging, especially in this time, will not be tolerated. Our new L.A. County District Attorney has made it very clear he is going to prosecute those who price gouge. So, I think what this ordinance does is get us in line with the state's regulations and rules ... for that reason, I am in conformity with the ordinance as it is presented," said Mayor Lester Friedman.

Some of the changes incorporated into the new ordinance include a definition of repair and reconstruction services and a detailed definition of how to calculate the rental price of a housing unit during a declared emergency. As per the ordinance, it will be unlawful to sell consumer goods for 10% above the price charged before a state of emergency. For housing not rented or offered for rent within one year prior to a declared emergency, a maximum of 160% of the fair market rent is allowed, as stipulated by the United States Department of Housing and Urban Development.

Later in the week at a Special Meeting on Feb. 7, the council voted to modify this urgency ordinance to mirror a new executive order issued by Governor Newsom. This order introduced two new changes relating to price gouging. The first of these is the lifting of a price cap on new rental listings for some single-family homes in Los Angeles. In Beverly Hills, this concerns single-family houses with four or more bedrooms in the 90210 ZIP code (including those in the Beverly Hills Post Office) that had not been previously offered for rent for the year preceding Jan. 7, 2025. For these homes, the governor has waived the price gouging regulations that called for a maximum rent of 160% of the level set by the Department of Housing and Development. This waiver is in effect until March 8, 2025.

The prevailing price gouging laws limited the monthly rental price for properties in Los Angeles County to not exceed \$9,554 a month. Vice Mayor Sharona Nazarian expressed that this previous restriction may have discouraged homeowners in zip codes with high fair market values, such as those in 90210, from putting homes on the market at a below-market rate.

The second change in Newsom's order was the expansion of rental price gouging protections to leases of any length, rather than leases of only one year or less, in response to examples of leases being offered for 366 days to avoid the protections.

"What you're seeing here is a council reacting immediately to changes that have occurred, and I don't think you see that in many municipalities," Friedman said of the city's quick response to update its ordinance in response to changes in state law.

All councilmembers present approved the changes to the ordinance. These changes form part of the city's efforts made to support displaced individuals seeking housing following the Eaton and Palisades wildfires that devastated parts of Los Angeles County in January 2025. A statement issued by Newsom read, "This executive order provides targeted relief from regulations that impact victims and would otherwise slow this community's quick recovery." ●

Arts and Culture Commission Reviews Art Acquisition Process



Photo courtesy city of Beverly Hills

The Arts and Culture Commission met for a regular meeting on Feb. 11.

BY SELINA KAUSAR

The Beverly Hills Arts and Culture Commission meeting on Feb 11 included a detailed review of the city's art acquisition process and raised questions about whether a potential merger with the Parks and Recreation Commission will proceed. The meeting also covered details of the city's support for artists and organizations following the recent Palisades and Eaton wildfires, an update on the Kusama Infinity tulips sculpture restoration and upcoming

cultural events in the city.

Arts and Culture Program Associate Brandy Scott presented the commission with a detailed report on how art is acquired by the city. Since the commission's inception in the early 1980s, the city of Beverly Hills has amassed a world-class collection of both fine art and public art. There are currently four main ways in which the city adds to its art collection. The first is the City Art Collection, which falls under the responsibility of the

See ARTS AND CULTURE, page 9

City Holds Affordable Housing Informational Meeting



Photo courtesy city of Beverly Hills

The Affordable Housing meeting on Feb. 10 was held at Beverly Hills City Hall.

BY SELINA KAUSAR

An Affordable Housing Informational Outreach Meeting took place on Feb. 10 at Beverly Hills City Hall. The meeting offered a chance for prospective residents to learn more about the city's Placement Program, income criteria and affordable unit rates. The meeting was led by HouseKeys, an organization that manages the city's Affordable Housing Placement Program and implements the city's housing guidelines. Although there are currently no vacancies for

low- or moderate-income housing available in Beverly Hills, the meeting provided valuable information on how prospective residents can apply and which applicants will be given priority.

Julius Nyanda, the founder and program manager of HouseKeys, led the meeting to a sizeable audience of both in-person and virtual attendees. Nyanda explained that affordable housing units are those located within private developments and reserved for individuals

See AFFORDABLE HOUSING, page 8

the **SANTA BARBARA**
ANTIQU
Decorative Arts
& Vintage Show & Sale

At the Earl Warren Showgrounds with FREE PARKING
3400 Calle Real, Santa Barbara, California

FEB 21, 22, & 23, 2025
FRI 11-6, SAT 11-6, SUN 11-4

From 17th Century to Mid-Century....

Over 60 Quality Dealers from around the country offer a wide array of furniture, paintings, jewelry, silver, china, textiles, Asian, & much more!



\$8 Adults w/ this ad • \$7 Senior (62+) • Child (Under 12 Free)
Cash Only at the Door | Admission is good for all 3 days

For Dealer Inquiries, Contact Gae Ann McHale at 619-925-2346

SBAntiqueShow.com

AMENITIES YOU WILL *Love*
Schedule a tour to learn more



The Pinnacles at Burton
SENIOR LIVING

Beverly Hills' Premier Senior Living Residence

SAVE \$6,000!
Take financial possession by February 28, 2025 and
RECEIVE \$500 OFF MONTHLY RENT*
for the first 12 months!

Beverly Hills' Newest Memory Care
8757 Burton Way,
Los Angeles, CA 90048

Independent & Assisted Living
8750 Burton Way,
Los Angeles, CA 90048

thepinnaclesatburton.com

Call 310-278-8323
to schedule a personal tour!

*Must take financial possession by 2/28/25 to receive \$500 off monthly rent. First 12 months only. Offer exp.2/28/25.
License #'s 197602106 & 197602370

Sarah Kaber Named ACSA Region XIV Elementary Principal of the Year



Photo courtesy BHUSD

Principal Sarah Kaber and Dr. Michael Bregy at the El Rodeo Elementary assembly

El Rodeo Elementary School Principal Sarah Kaber has been named the Elementary Principal of the Year for Region XIV by the Association of California School Administrators (ACSA). The award recognizes an elementary school principal who exemplifies exceptional leadership, dedication to student success, and a commitment to public education.

District leaders, cabinet members, fellow principals, family, and colleagues surprised Kaber with the announcement during El

Rodeo Elementary's weekly assembly. "Sarah Kaber is an extraordinary leader who has transformed El Rodeo Elementary School into a model of Educational Excellence," said Superintendent Dr. Michael Bregy. "Her unwavering dedication to student achievement, innovative approach to instruction and steadfast commitment to fostering a supportive and inclusive school culture make her truly deserving of this honor. It is a privilege to work alongside such an inspiring leader," he said. ●

Bruce Meyer Addresses Rotary Club of Beverly Hills



Photo by Lillian Raffel

Rotary Club of Beverly Hills President, BH Fire Captain Greg Barton (left) with Bruce Meyer

The Rotary Club of Beverly Hills welcomed Bruce Meyer as its luncheon speaker on Feb. 10. The long-time Beverly Hills resident, real estate investor and renowned automobile collector recounted a comprehensive history of his and his extended family's illustrious role

in making Beverly Hills what it is today (as the owners of Gearys, among other things). Meyer and his good friend Jay Leno were profiled in the cover story of the Courier's Summer STYLE Magazine in June 2024. ●

Providing Compassionate Care
Prioritizing comfort, dignity, and safety.

February Memory Care Move-in Special
Take financial possession by February 28, 2025 and pay
ONLY \$214 TO MOVE IN!
Call 310-278-8323 to Learn More!

The Pinnacles at Burton

SENIOR LIVING

Memory Care | Assisted Living | Independent Living

Memory Care: 8757 Burton Way, Los Angeles, CA 90048

Assisted Living: 8750 Burton Way, Los Angeles, CA 90048

310-278-8323 | info@thepinnaclesatburton.com

ThePinnaclesatBurton.com

Memory Care License #197602370 | Assisted Living License #197602106

*Must take financial possession by 2/28/25. Offer exp. 2/28/25.

Thank you,
First Responders...

Essential doesn't begin to describe how we feel about our community and each of you.

POPPY BANK

FDIC

How to Give Back This Valentine's Weekend and Beyond

BY CAROLE DIXON

In the wake of the devastating wildfires in January, many locals are focused on giving back to the community through donations, volunteering and gift cards. This sentiment could not be more appropriate than for Valentine's Day which falls over the Presidents Day long weekend this year. The Courier has curated creative ways to venture out for art events, entertainment, dinner, drinks and staycations, while giving back to first responders and displaced victims.

Art Events

Gagosian Beverly Hills has welcomed local artist Alex Israel for his first show in a decade running until March 22. The "Noir" exhibition features new paintings of iconic Los Angeles locations at night from the Troubadour to a tattoo parlor. Israel's hometown is LA, and this exhibition is a celebration of the city he loves and draws inspiration from. He is donating a portion of the sale proceeds to the LA Arts Community Fire Relief Fund. This fund was set up by the J. Paul Getty Trust to provide critical emergency support for artists and arts workers impacted by the fires.

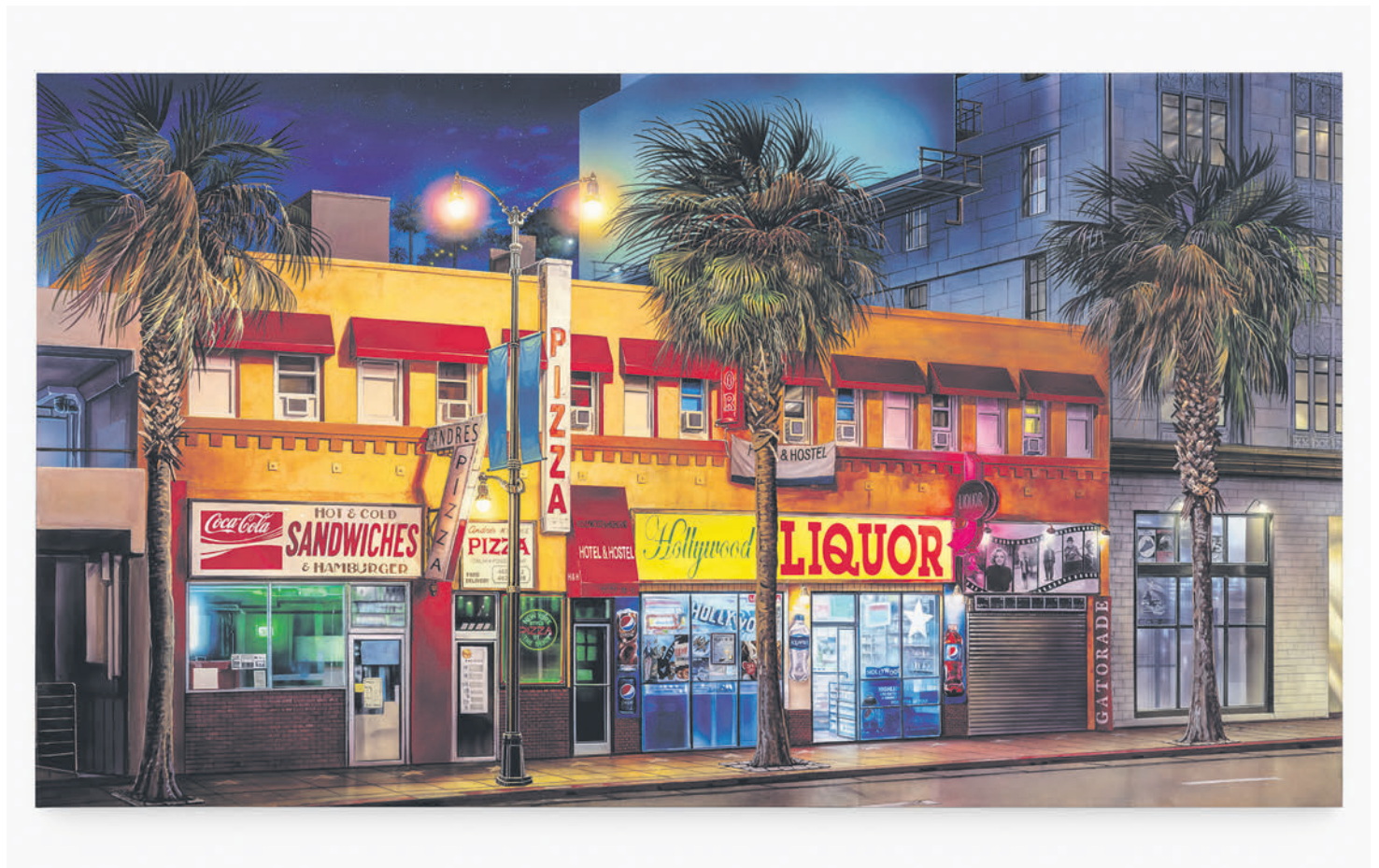
Other institutions such as the Hammer Museum, as part of the Mohn Art Collective alongside LACMA and MOCA, have also joined the J. Paul Getty Trust in the creation of the \$12 million LA Arts Community Fire Relief Fund. Frieze Los Angeles (Feb. 20-23) at the Santa Monica Airport, is a founding contributor to the LA Arts Community Fire Relief Fund and will help in aiding recovery efforts. Maison Ruinart is supporting Frieze's efforts, alongside the "Conversations with Nature" debut, artist Sam Falls has created limited-edition collectibles including hats and books available in the Ruinart Art Lounge with 100% of proceeds going to aid this cause. Visit frieze.com for tickets.

ArtWalk returns to the West Hollywood Design District on Feb. 19, for an evening of support for the local community by raising funds for those affected by the LA wildfires. Take a stroll while shopping, dining and gallery hopping on Melrose, Beverly and Robertson corridors before and after dark with extended hours. Visit westhollywood-designdistrict.com for more information.

Chef's Unite

Beverly Hills has launched "EAT. DONATE. LOVE" now through Feb. 15. The dine-out-to-help campaign will take a portion of the proceeds at participating Beverly Hills hotels, over 20 restaurants and bars to raise a total of up to \$175,000, which will support Los Angeles wildfire relief efforts for the Boys & Girls Club of Malibu and Pasadena, and the California Community Foundation Wildfire Recovery Fund.

Participating hotels include The Beverly Hills Hotel, the Beverly Hilton, Beverly Wilshire, A Four Seasons Hotel, L'Ermitage Beverly Hills, The Maybourne Beverly Hills, The Peninsula Beverly Hills and Waldorf



Photos: Josh White, Courtesy Gagosian

Hollywood Liquor, 2024, by Alex Israel

Astoria Beverly Hills. Check lovebeverlyhills.com for more information.

CHEFS ❤️ LA is an all-star fundraising benefit bringing together the biggest names in food, hosted at Lawry's The Prime Rib in Beverly Hills on Feb. 27.

The driving forces behind this event are producers Brad Metzger, a former waiter at The Grill on the Alley and Jacqui Leanza, hosted by "Somebody Feed Phil" creator Phil Rosenthal, along with auctioneer Billy Harris. With 100% of proceeds directly benefiting Jose Andres' World Central Kitchen and Restaurants Care, Andres' new Mexican-inspired Butterfly in Culver City is also participating in the event, along with chefs including Daniel Boulud, Ludo Lefebvre, Michael Cimarusti, Suzanne Goin, Josiah Citrin, Nyasha Arrington, Jordan Kahn, Burt Bakman, Jon Yao, Curtis Stone, Jeremy Fox, Michael Voltaggio, and Sherry Yard among others.

The event will also honor a distinguished group of community heroes, including chefs Mary Sue Milliken and Susan Feniger, who have gone above and beyond to support those affected by the wildfires.

"Food has the power to bring people together, and the hospitality industry is built on community and giving back. Hosting this event is an honor," said Ryan Wilson, CEO of Lawry's Restaurants, Inc. Visit ChefsLoveLA.com for details.

Chefs Walter and Margarita are hosting Los Angeles Rise Up on Feb. 24 in partnership with Big Sur Food and Wine and Global Empowerment Mission at République on La Brea Avenue. This benefit event is dedicated

to supporting those in the hospitality and service industry who are recovering from the LA fires. Participating chefs include Dominique Crenn, Nancy Silverton, Chris Bianco and more. Tickets available at losangelesriseup.ticketsauce.com.

Cocktails For a Cause

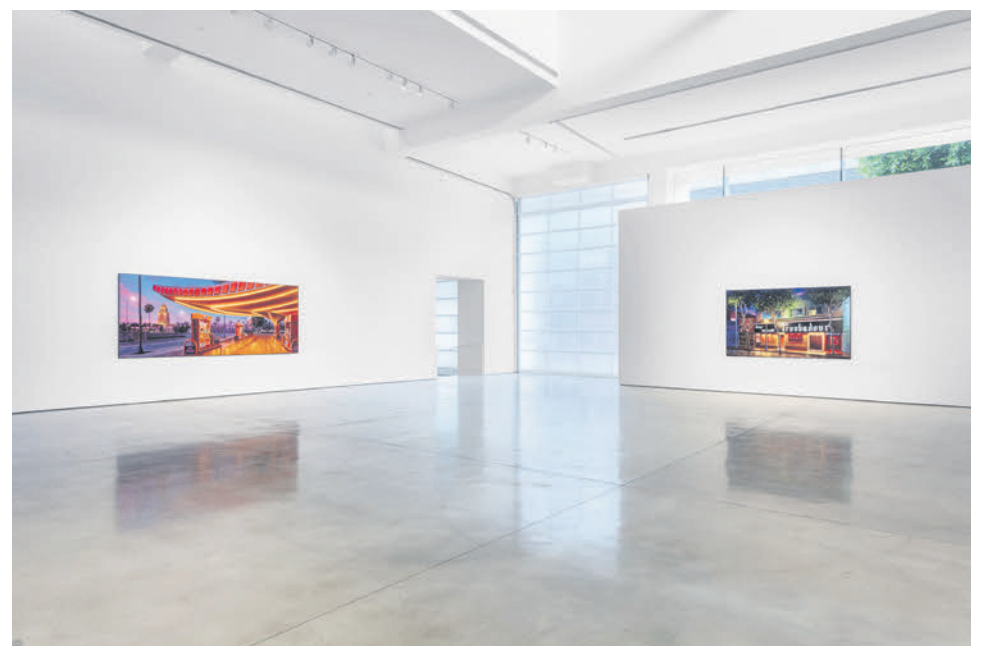
Ola Sol Benefit Cocktails: Sip for a Cause is an ongoing initiative around LA where some of the top restaurants are creating specialty cocktails with Ola Sol premium agave wine. Sip and support at Cobi's and Father's Office in Santa Monica or Butchr Bar in Echo Park. When a drink is purchased, a meal

will be donated to the LA Food Bank to feed first responders and displaced Angelenos.

For something alcohol-free, Grammy Award-winner Kacey Musgraves' Deeper Wellness Smoothie will be available at Erewhon tonic bars through March 5. Featuring plant-based Almond Malk, a portion of proceeds will benefit the Altadena Girls charity, which is working with teenage victims of the wildfires.

Pampering and Fitness

The Beverly Wilshire has teamed up with Isaac Boots, who will lead workout classes that combine body resistance, dance



Interior of Alex Israel's "Noir" exhibit at Gagosian

conditioning and targeted reps from Feb. 20 to March (Thursday through Sunday each week) with 100% of ticket sales benefiting World Central Kitchen. Bookings can be made at isaacboots.com.

Entertainment

The Wallis Annenberg Center for the Performing Arts will hold The Wallis Delivers: A Benefit Evening to Support Wildfire Recovery on April 30 at 6 p.m., hosted by Jane Fonda.

“The recent Los Angeles wildfires ravaged far too many of our communities, neighborhoods and homes, but they could not dim our hearts,” said Wallis Annenberg. “The outpouring of help and support has been truly extraordinary and a lot more is needed. That’s why we are dedicating this special evening to helping Los Angeles rise from the ashes of the Eaton and Palisades fires.”

The event also honors philanthropy and the extraordinary generosity of the Annenberg Foundation and Ms. Annenberg. Dominic Ng, Chairman and CEO of East West Bank, a recognized community leader, will be named the first recipient of The Wallis

Icon Award, for his visionary leadership in the realm of corporate philanthropy. For tickets, visit thewallis.org.

Staycations

The Ranch at Malibu has donated \$25,000 to the Los Angeles Emergency Preparedness Foundation Community Brigade, which works closely with the L.A. County Fire Department. This volunteer organization helps communities recover from natural disasters. As an additional way to show support, through Feb. 17, when you reserve a stay at The Ranch Malibu, it will donate \$1,000 from your reservation to the Brigade.

Malibu Beach Inn will be offering discounted room rates for short or long-term stays to those displaced or evacuated. To support the LA dining community, Carbon Beach Club will offer a 20% discount on food to anyone affected by the wildfires in this community and looking to support the hotel’s recovery. All guests have membership-level access to CURE Wellness Center’s fitness and spa facilities, in addition to mental health and telehealth resources. ●



Photo courtesy of CHEFS ♥ LA

Nyesha Arrington and Joiah Citrin, two chefs participating in CHEFS ♥ LA

Vanity Fair Street Closures: Access to Local Businesses Maintained



Easy routes to N. Crescent Drive

FROM NORTH:

- ➡ South on N. Cañon Drive, left on Dayton Way, left or right on Crescent Drive
- ➡ South on Rexford Drive, right on Clifton Way, left or right on Crescent Drive

FROM SOUTH:

- ➡ Westbound on Wilshire Blvd., right on Crescent Drive
- ➡ Eastbound on Wilshire Blvd., left on Dayton Way

Parking Available	
Self Park (1-hour free) 10 – 333 N. Crescent Drive 12 – 9361 Dayton Way	Self Park (2-hours free) 1 – 345 N. Beverly Drive 5 – 450 N. Rexford Drive 6 – 438 N. Beverly Drive & – 439 N. Cañon Drive 7 – 241 N. Cañon Drive & – 242 N. Beverly Drive
Pay as You Go Parking 18 – 450 N. Crescent Drive Garage entrance is accessible via S. Santa Monica Blvd. Garage will be closed on March 2 for the event.	

400 block of N. Crescent Drive will be CLOSED between N. and S. Santa Monica Blvd. from 10 p.m. Monday, February 17, 2025, until 10 p.m. Friday, March 7, 2025.

More info at BEVERLYHILLS.ORG/VANITYFAIR

HEALTH, from page 1

Bowl. In this emotional climate, how do we protect our well-being while remaining sensitive to the struggles of others?

When global disasters strike close to home, it's even more challenging. We want to be thoughtful when so many of our neighbors are without homes, neighborhoods or loved ones. At the same time, it's important to allow ourselves to experience positive emotions when our own lives are going well. Understanding the difference between sympathy and empathy—and practicing each appropriately—can help us maintain joy while helping those in need.

Sympathy is, according to Merriam-Webster, “the feeling that you care about and are sorry about someone else’s trouble, grief or misfortune.” It’s a recognition of another’s pain but doesn’t necessarily invite deeper emotional involvement. For example, sending a sympathy card or making a financial donation is a kind act while maintaining emotional distance. Your investment may be minimal, yet the recipient will likely feel supported.

Empathy, however, goes further. It’s “the ability to understand and share another person’s experience and emotions.” Empathy involves stepping into someone else’s shoes and feeling their pain, which creates a deeper connection. It allows the receiver to share their feelings in a safe space, promoting healing. Dr. Gabor Maté says, “Trauma is what happens inside a person in the absence of an empathic witness.”

Mirror neurons play a vital role in how we connect emotionally. These neurons allow us to understand and feel the emotions of others by mirroring their experiences in our own brains. Essentially, when someone experiences joy, sorrow or pain, our mirror neurons help us feel those same emotions, fostering empathy and connection. This biological mechanism explains why we feel a sense of shared joy or sorrow when witnessing others’ experiences. Experience and intention shape the number of mirror neurons in our brains, affecting how in tune we are with others.

When we express sympathy, our mirror neurons may remain dormant. While sympathy can suffice in more casual relationships or in response to distant tragedies, empathy is essential for deeper human connections. But practicing empathy requires emotional resilience and healthy boundaries—without which we risk burnout. Offering empathy can feel draining, and it’s important to maintain boundaries. When many people are suffering simultaneously, as with wildfires, empathy can quickly become overwhelming, leading to counterproductive responses like survivor’s guilt.

For those whose lives were close to crisis but spared, survivor’s guilt can creep in. “Why wasn’t I stricken? Why were they?” These questions reflect a natural desire to find meaning and order in times of chaos. Survivor’s guilt is often experienced in the first month or two after a tragedy and typically resolves on its own. If it lingers or disrupts functioning, professional help may be needed. Survivor’s guilt can be reframed as an opportunity for gratitude and giving back. Instead of being paralyzed by guilt, we can channel that energy into meaningful

action—volunteering, donating or offering a listening ear. When we actively give, we feel good, creating a “helper’s high” or a “giver’s gain.”

It’s not just OK to feel joy during difficult times—it’s essential. Joy doesn’t diminish the significance of the world’s pain; it offers balance, resilience and the emotional resources necessary to help others. Experiencing joy isn’t about ignoring suffering; it’s about finding moments of light amidst the darkness, helping us be better equipped to support others in need.

When we allow ourselves moments of happiness—whether through a heartfelt conversation, an inspiring show, or a joyful dinner with friends—we replenish our emotional reserves. This renewal strengthens us, allowing us to face adversity with greater clarity and purpose. Joy doesn’t have to be fleeting; it can be anchored.

Anchoring joy means intentionally choosing to hold onto good moments, to let joy root in us even when the storm rages outside. It’s about creating practices or habits that help us return to joy when we need it most—whether that’s through rituals, mindfulness or simply remembering what we are grateful for. The act of anchoring joy helps us emotionally recharge, enabling us to give and give often, staying present for both ourselves and those around us.

Resilience lies in embracing the full spectrum of human emotions—joy and sorrow alike. It’s possible to hold grief in one hand and hope in the other without invalidating either emotion. By acknowledging this duality, we honor our humanity and foster deeper connections with others. Joy and sorrow are not mutually exclusive; they coexist as part of the human experience—the yin and yang of emotions.

It’s important to recharge your emotional battery, whether you’re in a stressful situation or simply supporting someone in one. That way, you can give and give often, remaining emotionally strong for both you and others. Recognizing when you’re approaching emotional burnout and taking steps to recharge—whether through self-care, healthy boundaries or mindfulness—helps you stay equipped to offer support and empathy without exhausting yourself.

Experiencing a full range of emotions is key to living an optimal life. When we get stuck in an emotional state, disease can set in—depression, mania, prolonged grief or post-traumatic stress disorder. While we can’t always control the emotions we experience, we can regulate how we respond to them. The first step is awareness—recognizing our feelings as they arise. Mindfulness techniques like deep breathing or journaling help us gain perspective and choose how to act, rather than reacting impulsively.

So, when faced with the question, “How are you?” consider responding with depth, allowing your answer to reflect emotional complexity. Sharing both your struggles and moments of joy builds authenticity and connection. Then, turn to your neighbor, friend or family member and genuinely ask them, “How are you?” Listening with an open heart allows a unique opportunity for both of you.

“Happiness is not something ready-made. It comes from your own actions.”

— Dalai Lama ●



Image courtesy of HouseKeys

There are no current vacancies at 8600 Wilshire Blvd., a property previously involved in the program.

AFFORDABLE HOUSING, from page 4

from low- to moderate-income households.

Nyanda said that rent levels for affordable housing units are determined by the income limits set by the state of California, with thresholds for low-and moderate-income also stipulated by the state. Last fall, the city of Beverly Hills updated its affordable housing guidelines for rental units, which oversee the placement of tenants into these units. The city also updated its occupancy priority standards, which dictate who is offered a unit first if multiple applicants qualify based on income.

HouseKeys uses these criteria to see if an applicant is a good fit for affordable housing in Beverly Hills. Nyanda emphasized the difference between applicants being legally able to afford a unit compared to practically affording to live in the city and told the audience that this is the first thing they must determine before starting an application. Applicants must also have a minimum credit score of 620 and meet various tenant screening requirements. There are various income categories set for each type of unit based on both household size and gross maximum annual income. Assets owned by a household are factored into consideration, with 10% of the total asset value added to the gross household income. Applicants must earn below the threshold to qualify. Applicants are also not allowed to own any interest in a property, and they must be at least three years removed from a bankruptcy filing.

According to Nyanda, it is not uncommon for affordable housing units to have “hundreds or even thousands” of qualified applicants. As a result, HouseKeys implements a selection process that factors in the city’s occupancy priority preferences. The occupancy priority’s first tier prioritizes applicants who are existing occupants of lower-income units that have been displaced from a project site on which a new project will be developed. The next tier of priority is for senior households who have been displaced from a property in the

city of Beverly Hills within the last decade. The third tier prioritizes households with students attending the Beverly Hills Unified School District in the 10th grade or below, who have also been displaced from a property in the city within the last 10 years. The next tier covers all other households displaced from a property in the city of Beverly Hills over the last 10 years. The final two tiers are for senior households (classed as ages 62 and above) or individuals employed full time by public or private entities located within Beverly Hills.

Preempting any possible questions about who qualifies as “displaced,” Nyanda said the program uses the city’s definition of displacement. On Nov 7, 2024, the Beverly Hills City Council adopted an ordinance that defines displacement as when an individual or household must permanently vacate their primary housing unit due to a reason falling within either of the following five categories. Firstly, demolition of a property unit due to a new development project. Secondly, voluntary vacation of a housing unit due to a new development project on the subject property, for example, accepting a “cash for keys” offer. Withdrawal of a housing unit from the rental housing market under the Ellis Act is considered the third category of displacement. The fourth and fifth categories concern involuntary evacuation as a form of displacement for properties that have been affected by a natural disaster in the city of Beverly Hills.

In a brief question-and-answer session at the end of the meeting, several attendees expressed interest in the program and asked when new units will become available. Nyanda said there is no set date for when vacancies will be added to the program, as it depends on when new construction projects are approved by the city. Affordable housing units were previously available at 9265 Burton Way, 250 N. Crescent Drive, 321-327 S. Elm Drive and 8600 Wilshire Blvd. ●

www.beverlyhillscourier.com

Local Group Pairs Up to Care for Wildfire Victims



Photo by Michael Irwin

24LA x Pair and Care Hollywood warehouse space where volunteers and aid recipients can shop

BY BIANCA HEYWARD

After losing her home in Malibu in the fires, Julia Phelan and her family moved to a friend's house in Beverly Hills, where they have lived for over a month. Recently, she heard about an organization called Pair and Care through friends and went to the group's social media page. Pair and Care operates a donation center out of a 10,000-square-foot space on the second floor of the Citizen News Building in Hollywood. For the past month, it has provided wildfire victims with immediate support in the form of clothing, shoes, personal care items and more.

The mutual-aid relief organization helps families impacted by the fires ravaging the

Los Angeles area in January by pairing them with vetted volunteers who come in Tuesday through Saturday and shop from a curated selection of new and lightly used items based on specific requests and notes from their assigned family.

Launched by Aidan Cullen, co-founder of the creative networking platform Nova, Pair and Care is managed by 24LA, a wildfire relief project founded by Los Angeles natives Kenyan Armitage and Malin Smith. With the help of donations from more than 70 brands and hundreds of dedicated volunteers, 24LA x Pair and Care has been able to help over 1,000 families rebuild by offering a personalized boutique shopping experience. Through Nova, Cullen was able to enlist the

help of brands like Puma, Adidas, Skims, Miaou, I.Am.Gia, Saje, Clinique and Goop to donate goods that would then be packed and delivered to people who had lost everything. "After seeing a lot of friends who wanted to help but didn't know where to put their energy and hearing of so many families who required assistance and weren't getting what they needed, we decided, because we know so many brands, let's see if we can get them to donate stuff," Cullen told the Courier. Recently, Pair and Care partnered with the LAROI Foundation, a nonprofit started by singer-songwriter The Kid LAROI, to collect donations of instruments, musical equipment, cameras, art supplies and more for creatives who lost everything in the fires.

Individuals impacted by the fires sign up by filling out an intake form located on the Pair and Care Instagram page and are then matched with two volunteers and connected via text message. Once volunteers are assigned to a family, they come into the warehouse in Hollywood and pack a suitcase for them based on their likes and needs. To provide ongoing support, volunteers often make two shopping trips for one family. The system is designed so volunteers can help those in need by communicating directly and then hand-delivering specific items they want. The warehouse space in Hollywood is divided into sections based on age and gender, with over 100 racks of clothing organized by size and style, with a separate area for shoes and personal care stocked

with products from Murad, Humanrace, Verb, Starface, Crown Affair and more. Volunteers can choose from a selection of On running sneakers, eyelet SEA dresses, Puma tracksuits, Burton sweatshirts, Steve Madden children's shoes, Honeydew pajamas and racks of vintage T-shirts.

For Julia Phelan's family, the temporary stay in Beverly Hills has been made a little brighter, thanks to Pair and Care.

"I didn't want to get anything for me or my husband because we can find our own things, but it's kind of a fun thing for a 16-year-old to get a surprise care package," Phelan told the Courier. "Right now, we're just trying to find those small moments of some little ray of sunshine coming from somewhere. So, it just served as one of those."

She added, "I had some folks reach out to ask for my son's shoe sizes and if I thought he would like red shoes or green shoes, and things like that. He was delighted with what he got."

At the end of the month, Pair and Care will transition to a biweekly pop-up in West LA. "It's a marathon, not a sprint," Smith and Armitage told the Courier. "As we move forward with 24LA x Pair and Care, we hope to address each person's evolving and specialized needs." To learn more, volunteer or donate, visit https://www.instagram.com/pair_and_care/ or follow @pair_and_care or @24laproject on Instagram. ●

NEWS

ARTS AND CULTURE, from page 4

Arts and Culture Commission, and includes developer-owned art, donated art, loaned art and temporary installations.

The second is the Mayor's Purchase Award, whereby the mayor is invited to attend the Beverly Hills Art Show each year and select a piece of artwork to be purchased and installed at a location of their choice. The City Council also has authority to choose and install artwork independent of the Arts and Culture Commission's review, as was done for the Remembering Lives Lost memorial flag display in Beverly Gardens Park last year.

Donations are a pivotal way in which the city acquires artwork through its relationships with community partners such as the Chamber of Commerce, Rodeo Drive Committee and the Beverly Hills Unified School District. In 2019, several Mr. Brainwash pieces were installed by the Rodeo Drive Committee throughout the business district and were later donated to the city's public art collection. Residents and organizations are also allowed to install art on their property independent of commission review, so long as the artwork does not require exterior construction work with a

valuation over \$500,000.

The city's fine art is paid for using the Fine Art Fund, and the Mayor's Purchase Award is financed by the Community Services General Fund budget. Senior Recreation Supervisor Paul Paolone updated the commission on the Fine Art Fund's balance, which currently sits at \$2,651,066.

Commissioner Maralee Beck said this information is helpful for Beverly Hills residents who may have concerns that taxpayer funds are being used to finance all the artwork across the city. "It's a way for the public to understand how art becomes a part of permanent collections in the city of Beverly Hills, and that's very helpful because we have to keep reminding people that no, we're not taking your tax money and spending it this way, nor are we using it to take care of our artwork," Beck said. "It is a restricted fund specifically for this purpose, and that's why the commission was invented."

Assistant Director of Community Services Patty Acuna shared details about the projected next steps for the restoration of artist Yayoi Kusama's "Hymn of Life: Tulips" sculpture in Beverly Gardens Park. The sculpture is particularly significant due

to being Kusama's first public art commission in the United States and the Arts and Culture Commission's first commissioned artwork. The restoration is progressing, with a second site visit scheduled for next week for final touch-ups.

Restoration and redefinition served as central themes in this meeting as the commission discussed its future. The City Council is currently reviewing the commission standardization process, with potential plans to merge the Arts and Culture Commission with the Parks and Recreation Commission. Commission members expressed concern at this prospect. Chair Carla Gordy Bristol said, "I hope the time they're taking means they're really researching what makes the most sense for our commission."

Vice Chair Pamela Beck said, "You need to have some expertise about arts and culture to be on the Arts and Culture Commission. If you are on the Parks and Recreation [Commission], it's unlikely that you have arts and culture credentials ... I'm not quite sure how a commission would function if it's composed of people who do not have expertise in a specific area."

The City Council has yet to come to a decision about whether the Arts and Culture

Commission will survive as an independent entity.

The city has convened with other municipal arts agencies and the National Coalition for Arts Preparedness and Emergency Response to help coordinate a regional response to the wildfires. Angela Gaspar-Milanovic, director of grants and professional development at the Los Angeles County Department of Arts and Culture, presented the commission with a list of resources available to displaced artists or workers in the arts and culture industry, including the Craft Emergency Relief Fund, the Getty Foundation's LA Arts Community Fire Relief Fund and LA County's Department of Economic Opportunity grants.

The commission also shared plans for upcoming events in the city, including Community Services Nowruz Table Displays in March, Festival Beverly Hills and the Beverly Hills Art Show. Submissions for the art show close this month, with the initial application deadline on Feb. 14 and the late application deadline on Feb. 21. ●



NOTICE OF COMMISSION VACANCIES

***Architectural and Design Review Commission - One Vacancy**
(Term begins: July 1, 2025)

Cultural Heritage Commission - One Vacancy
(Term begins: January 1, 2026)

Traffic and Parking Commission - One Vacancy
(Term begins: July 1, 2025)

Public Works Commission - Two Vacancies
(Terms begin: July 1, 2025 and January 1, 2026)

(*Architectural and Design Review Commission: position must be filled by a landscape architect, Beverly Hills residency not required for this vacancy.)

**DEADLINE TO APPLY FOR THE ABOVE COMMISSION IS ON
FRIDAY, FEBRUARY 28, 2025 AT 5:00 P.M.**

For more information on the Commission position and obtain an application online, please visit the City's website at www.beverlyhills.org/applyforacommission or call the City Clerk's Office at (310) 285-2400 to obtain the application form by mail or e-mail. Selected applicants will be required to complete a background check.

Huma Ahmed
City Clerk

BHHS Breaks Ground on the New Konheim Building



Photo courtesy BHUSD

Laurie Konheim, BHUSD Board President Ruth Marcus and Lyn Konheim at the groundbreaking ceremony

Beverly Hills High School (BHHS) has marked the groundbreaking of the new Konheim Building, a state-of-the-art athletics center. The ceremony brought together the BHUSD Board of Education, district leadership, faculty, community members, and the Konheim family.

"The Konheim Building will be a game-changer

for our students and community, providing them with world-class resources that match their dedication and hard work," said Dr. Michael Bregy, BHUSD Superintendent. "This project reflects our vision for the future, ensuring that every student at BHHS experiences a day well lived." ●

Correction:

The Feb. 7 issue of the Courier inadvertently misattributed a quote regarding the enrollment of Palisades Charter High School students in the BHUSD to Board Vice President Judy Manouchehri. In fact, the quote was made by another BHUSD board member. Manouchehri's sentiments on this topic are summarized as follows. "We [BHUSD] are getting new residents. These are the folks that have been displaced by the fires as they lost their homes ... and it is important for the overall community to understand that we are now starting to serve and welcome new resident students in addition to those who were not displaced from homes and were welcomed in recent weeks. So it is a big puzzle with lots of moving pieces that are coming together."



NOTICE OF VOLUNTEER OPPORTUNITY

The City of Beverly Hills is seeking Technical and Professional Advisors for the Permanent October 7th Memorial Committee

**DEADLINE TO APPLY:
FRIDAY, MARCH 7, 2025, AT 5:00PM**

Term: One-year (minimum)

Qualified experts in memorial design and development are recommended to apply. These unpaid, volunteer positions will be appointed by the City Council.

For more information, please visit the City's website at www.beverlyhills.org/applyforacommission or call the City Clerk's Office at 310-285-2400.

Police Blotter

The following incidents of assault, burglary, DUI arrest, robbery, theft and vandalism have been reported. Streets are usually indicated by block numbers.



ASSAULT - AGGRAVATED

2/2/2025, 12:41 p.m. at 200 Block of S. BEVERLY DRIVE

ASSAULT - SIMPLE

2/9/2025, 12:16 p.m. at S. SANTA MONICA BOULEVARD / N. BEVERLY DRIVE

2/8/2025, 11:23 p.m. at 100 Block of S. ROBERTSON BLVD.

2/7/2025, 8:20 p.m. at 100 Block of N. LA CIENEGA BLVD.

2/5/2025, 2:13 p.m. at 9500 Block of WILSHIRE BLVD.

2/2/2025, 1:06 p.m. at 200 Block of N. CANON DRIVE

2/1/2025, 11 p.m. at WILSHIRE BOULEVARD / WHITTIER DRIVE

2/1/2025, 10:22 p.m. at 900 Block of N. REXFORD DRIVE

BURGLARY - COMMERCIAL BUILDING

2/4/2025, 7:05 p.m. at 300 Block of N. CANON DRIVE

2/3/2025, 2:35 p.m. at 300 Block of N. CANON DRIVE

BURGLARY FROM A MOTOR VEHICLE

2/3/2025, 11:41 a.m. at 400 Block of S. PALM DRIVE

2/1/2025, 1 p.m. at 400 Block of S. LA PEER DRIVE

BURGLARY - RESIDENTIAL (COMMON AREA)

2/4/2025, 7:04 a.m. at 100 Block of MCCARTY DRIVE

2/2/2025, 6:58 p.m. at 100 Block of MCCARTY DRIVE

BURGLARY - RESIDENTIAL (NO ONE HOME)

2/7/2025, 7:47 a.m. at 700 Block of N. CRESCENT DRIVE

2/6/2025, 6:45 p.m. at 700 Block of N. ROXBURY DRIVE

2/3/2025, 5:30 p.m. at 500 Block of N. REXFORD DRIVE

2/1/2025, 6:51 p.m. at 600 Block of N. RODEO DRIVE

DUI ARREST

2/12/2025, 4:07 a.m. at N. SANTA MONICA BOULEVARD / N. CAMDEN DRIVE

2/3/2025, 3:25 a.m. at S. SANTA MONICA BOULEVARD / N. CANON DRIVE

2/1/2025, 6:20 a.m. at 400 Block of N. REXFORD DRIVE

2/1/2025, 1:19 a.m. at 500 Block of N. PALM DRIVE

MOTOR VEHICLE THEFT

2/4/2025, 4:40 p.m. at 8900 Block of WILSHIRE BLVD.

2/3/2025, 9:27 a.m. at 100 Block of N. ALMONT DRIVE

ROBBERY

2/11/2025, 4:26 p.m. at 9600 Block of WILSHIRE BLVD.

THEFT OF AUTO PARTS

2/9/2025, 10 p.m. at 400 Block of S. BEDFORD DRIVE

THEFT FROM COMMERCIAL BUILDING

2/11/2025, 2:57 p.m. at 200 Block of N. RODEO DRIVE

THEFT - GRAND

2/10/2025, 5 p.m. at 9300 Block of OLYMPIC BLVD.

2/9/2025, 2:24 p.m. at 200 Block of REEVES DRIVE

2/8/2025, 4:30 p.m. at 9700 Block of WILSHIRE BLVD.

2/8/2025, 1:30 p.m. at 1000 Block of WOODLAND DRIVE

2/5/2025, 6:40 p.m. at 300 Block of N. BEVERLY DRIVE

2/5/2025, 2:45 p.m. at 9500 Block of WILSHIRE BLVD.

2/4/2025, 12 a.m. at 300 Block of S. DOHENY DRIVE

THEFT - GRAND (FROM VEHICLE)

2/6/2025, 3:30 p.m. at 9200 Block of BURTON WAY

THEFT - PETTY

2/9/2025, 5:51 p.m. at 200 Block of N. CRESCENT DRIVE

2/5/2025, 7:49 a.m. at 100 Block of S. CAMDEN DRIVE

2/4/2025, 9:41 p.m. at 300 Block of N. BEVERLY DRIVE

2/1/2025, 10:57 a.m. at 9000 Block of WILSHIRE BLVD.

THEFT - PETTY (FROM VEHICLE)

2/11/2025, 1 a.m. at 300 Block of S. SWALL DRIVE

2/10/2025, 11 p.m. at 200 Block of S. DOHENY DRIVE

VANDALISM

2/8/2025, 5 p.m. at 9500 Block of S. SANTA MONICA BLVD.

2/7/2025, 11:54 p.m. at 100 Block of S. CRESCENT DRIVE

2/1/2025, 2:10 p.m. at DAYTON WAY / N. CANON DRIVE

499 N. Canon Drive
Suite 212
Beverly Hills, CA 90210
310-278-1322
Fax: 310-271-5118
BEVERLYHILLSCOURIER.COM

Publishers

Lisa Friedman Bloch

John Bendheim

Executive Editor

Ana Figueroa

Writers

Sean Beckner-Carmitchel

Bianca Heyward

Selina Kausar

Jessica Ogilvie

Neely Swanson

Advertising Directors

Rod Pingul

Dina Figueroa

Business Operations Manager

Beverly Weitzman

Production Director

Ferry Simanjuntak

Prod. Manager/Assoc. Editor

Jamison Province



2025 MEMBER

California Newspaper
Publishers Association



Photos and Unsolicited Materials Will Absolutely Not Be Returned. Only unposed, candid photos will be considered for publication. All photos and articles submitted become property of the Courier. No payment for articles or photos will be made in the absence of a written agreement, signed by the Publisher.

Adjudicated as a Newspaper of general circulation as defined in Section 6008 of the Government Code for the City of Beverly Hills, for the Beverly Hills Unified School District, for the County of Los Angeles, for the State of California and for other districts which include the City of Beverly Hills within each such district's respective jurisdiction in proceeding number C110951 in Superior Court, California, on February 26, 1976.

All contents copyright © 2025 BH Courier Acquisition, LLC, all rights reserved. No part of this publication may be copied, transmitted or otherwise reproduced without the prior written consent of BH Courier Acquisition, LLC. Member: City News Service.

Birthdays



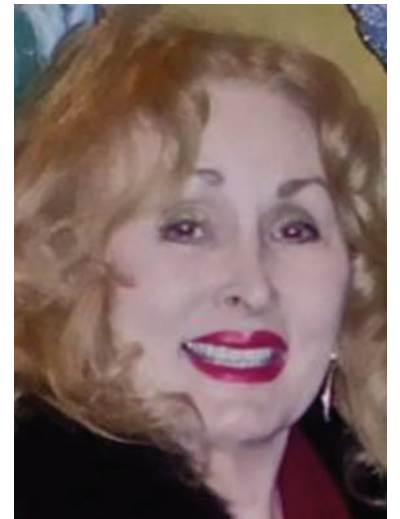
HAPPY BELATED BIRTHDAY
AIMEE SHERRY
February 6



HARRISON LITVACK
February 14



NADER AL-NAJI
February 15



ANNETTE GOODMAN
February 16



STUART RAFFEL
February 16



MARK STAINBROOK
February 16



DEBORAH FRANK
February 17

BEVERLY HILLS COURIER

TO HELP SHOWCASE OUR COMMUNITY AT ITS BEST, PLEASE SEND A CURRENT PHOTO EVERY YEAR ALONG WITH YOUR FULL NAME AND PHONE NUMBER. ALL PHOTOS MUST BE HIGH-RESOLUTION, AT LEAST 300 DPI.

PLEASE SEND THE PHOTOS WITH AT LEAST TWO WEEKS NOTICE TO:
EDITORIAL@BHCOURIER.COM



Astrology

BY HOLIDAY MATIS

ARIES (March 21-April 19). Your charisma comes from the way you take moments of pure joy and relax into them like a bubble bath, soaking in all there is to love about being alive. You'll draw others into your magnetic orbit and they'll share in the fun.

TAURUS (April 20-May 20). You're fantasizing about fresh fun and the connections you want to cultivate going forward. Needing more out of life isn't frivolity. It's about the deep and beautiful ways you connect with others and how alive that makes you feel.

GEMINI (May 21-June 21). You'll soon connect with people who will give you the same level of thoughtfulness and curiosity that you bring to the table. If the timing is not quite as expedient as you wish, just know that you're building a foundation for deeper fulfillment.

CANCER (June 22-July 22). Cherish those relationships that honor you in all your complexity, not just in the ways you can perform. You'll revel and thrive with those who let you know that you are far more than enough, just as you are.

LEO (July 23-Aug. 22). Love stirs strong feelings that feel like the finger of fate, nudging you toward your next move. How much of these passions, impulses and longings are love's truth and how much is your mind shaping a story to fit what your ego craves?

VIRGO (Aug. 23-Sept. 22). There's something crucial waiting on the back burner, but go forward anyway, in celebration of the opportunities you've already seized and the progress you've made. You'll soon have all the time and space to dive into the passions that set your heart aflutter.

LIBRA (Sept. 23-Oct. 23). The day brings a raw honesty into your inner dialogue, which will lead to a sparkling clarity of heart. This newfound transparency allows you to connect with desire that's unfiltered by outside expectations.

SCORPIO (Oct. 24-Nov. 21). Rushing love or connection before it's fully formed is like taking the cake out of the oven too soon; half-baked efforts won't satisfy. Whether it's a romantic gesture or a heartfelt conversation, patience will make all the difference.

SAGITTARIUS (Nov. 22-Dec. 21). You will know the allure of something special to chase; desire sparks, curiosity

unfolds and the thrill of pursuit takes root. A sense of purpose and excitement grows as you near your subject.

CAPRICORN (Dec. 22-Jan. 19). You will weave a story around what you love, imagining its history, its secrets and its future. Just remember that the story is your creation, which might be a world away from reality. If so, it's a lovely world, making for a fanciful commute to reality.

AQUARIUS (Jan. 20-Feb. 18). Your honesty and vulnerability are gifts to others

who might not yet have the courage to sit with their own truths. You face the future with a smile, and in your smile, people will see a reflection of their own true, raw and beautiful humanity.

PISCES (Feb. 19-March 20). You don't always feel the presence of love's guiding force, but it's still there, shaping your responses. In a moment of connection, you'll act from a deeper place, embodying the lessons love has taught you, even if you aren't consciously aware of them.



These siblings are Desi and Lucy. They're both poodles, with Desi weighing in at 11 pounds and Lucy at 15 pounds. Due to a sick owner, they need a new, loving family to adopt them. If interested, please contact Kim Sill at Shelter of Hope at 310-770-3571.

shelterhopepetshop.org

Fun and Games

SUDOKU
02/14/25 ISSUE

						2	4	
2			3		1			
		3	7					
		5	4	1		8		
	4	2				6	5	
		7		2	5	1		
					3	4		
			1		4			9
	8	9						

SUDOKU ANSWERS
02/07/25 ISSUE

5	6	3	4	1	7	2	8	9
7	9	4	6	2	8	5	3	1
2	1	8	9	3	5	6	4	7
1	4	9	3	6	2	7	5	8
3	5	2	8	7	4	1	9	6
6	8	7	5	9	1	4	2	3
9	7	5	2	8	6	3	1	4
8	2	6	1	4	3	9	7	5
4	3	1	7	5	9	8	6	2

PUZZLE ANSWERS
02/07/25 ISSUE

T	G	I	F	I	N	C	A	S	T	A	K	E	M	A	A	M
M	A	E	A	T	O	A	S	T	R	O	S	I	E	I	C	E
C	L	E	A	R	A	S	M	U	D	A	N	Y	T	O	W	N
E	A	R	C	L	I	P	J	O	L	T	H	I	T	O	N	
A	I	L	E	A	T	A	W	A	A	D	E	P	T			
A	R	D	E	N	C	Y	R	I	A	S	C	I				
L	E	O	N	E	O	D	D	S	B	A	C	K	S	T	A	
E	X	E	S	D	I	O	D	E	L	A	R	G	E	S	C	
S	S	U	Z	A	N	N	E	M	I	R	R	E	N	S	L	
S	T	A	R	E	D	A	T	E	E	L	S	E	W	K	I	
T	A	S	E	R	W	O	R	K	G	R	O	U	P	E	L	
R	I	O	S	H	A	N	A	N	O	B	R	A	D	A	Y	
A	C	L	S	O	I	L	G	U	N	S	I	T	R	E	P	
W	H	I	T	E	F	L	O	U	R	N	O	T	S	O	T	
S	I	D	E	S	T	E	P	L	E	A	N	M	O	O	R	
R	C	A	C	I	O	T	R	A	P	P	E	D				
A	P	N	E	A	G	I	V	E	O	F	F	H	U	T		
D	R	O	O	P	I	D	E	M	O	R	D	E	R	E	D	
R	O	S	S	E	L	L	I	N	I	H	A	V	E	E	S	
E	P	E	E	A	D	O	U	T	S	T	E	A	L	S		
P	S	S	T	D	A	M	S	N	E	R	D	Y	P	Y	R	

BEVERLY HILLS COURIER

TO ADVERTISE YOUR BUSINESS IN THE BEVERLY HILLS COURIER,
PLEASE CONTACT 310-278-1322
ADVERTISE@BHCOURIER.COM

THE NEW YORK TIMES SUNDAY MAGAZINE CROSSWORD PUZZLE
02/14/25 ISSUE

TWO-FOR-ONE SPECIAL
BY DERRICK NIEDERMAN / EDITED BY WILL SHORTZ

Derrick Niederman, of Charleston, S.C., recently retired from the mathematics department at the College of Charleston and is the author of numerous books, including "Math Puzzles for the Clever Mind," "Number Freak: A Mathematical Compendium From 1 to 200" and a mystery novel, "A Killing on Wall Street." This is his 14th crossword for The Times (all Sundays), going back to 1983. — W.S.

- | | | |
|--|--|---|
| <p>ACROSS</p> <p>1 Trading post</p> <p>5 For example</p> <p>8 Italian fashion house</p> <p>13 Hard-liner</p> <p>17 "Ave Maria" finale, appropriately?</p> <p>18 Buying binge</p> <p>20 Venetian magistrates of old</p> <p>21 French friend</p> <p>22 Lead actress in "The Lovely Bones" (2009) and "The Bourne Legacy" (2012)</p> <p>24 Fast/car</p> <p>25 Wild/bunch</p> <p>26 Informer, informally</p> <p>27 Cartoon character inspired by W.C. Fields</p> <p>29 Gave a darn</p> <p>30 3,605, in ancient Rome</p> <p>32 Image on a Missouri state quarter</p> <p>33 Wombs</p> <p>34 Italian sports cars, informally</p> <p>37 Gear tooth</p> <p>39 Desirable condition for hostas</p> <p>42 "Cómo ___?"</p> <p>43 Divinity sch. subj.</p> <p>44 Provoked an online fight</p> <p>47 Treasure</p> | <p>48 Holland/tunnel</p> <p>49 Figs. on flight boards</p> <p>51 Onetime Kia model</p> <p>52 Spot</p> <p>54 Tik___ challenge</p> <p>55 Home of the Temple of Poseidon</p> <p>57 Put-down</p> <p>59 They put things on the back burner</p> <p>61 Stadium/timekeeper</p> <p>63 Smash hit</p> <p>66 Steamed Chinese bun</p> <p>69 Exist</p> <p>70 Your business start-up?</p> <p>72 Word often shortened to a letter and a number</p> <p>73 Catherine the Great, e.g.: Abbr.</p> <p>74 Average/income</p> <p>75 Jeans popular in the 1980s</p> <p>77 Denver/Colorado</p> <p>79 Name spelled by the initials of five consecutive months</p> <p>80 The "E" in G.E.: Abbr.</p> <p>82 Applied to</p> <p>83 Org. once led by George H. W. Bush</p> <p>85 Direction of the wind that brought Mary Poppins</p> <p>87 Where "Cheers" is set</p> <p>90 Chart-topping Basil or Braxton</p> <p>91 Start of "O Come, All Ye Faithful"</p> <p>93 Place to buy tickets: Abbr.</p> <p>94 Jewel case holders</p> | <p>96 Architect Maya</p> <p>97 Follow</p> <p>98 Mel who sang the No. 1 hit "Careless Hands"</p> <p>100 Year abroad</p> <p>101 Stars and Stripes</p> <p>103 For the birds</p> <p>104 Rainproof cover</p> <p>106 ___ bears</p> <p>108 Hall-of-Famer Martínez</p> <p>109 Woodworking tool with a belt</p> <p>112 "Nothing much"</p> <p>116 Dino/expedition</p> <p>117 Card/game</p> <p>118 Certain emcee</p> <p>120 Grim Grimm figure</p> <p>121 Beethoven dedicatee</p> <p>122 Risk of heavy lifting</p> <p>123 First name in the Rock & Roll Hall of Fame</p> <p>124 Costner's role in "The Untouchables"</p> <p>125 Sheen</p> <p>126 Happy companion</p> <p>127 Right hand: Abbr.</p> |
|--|--|---|
- DOWN**
- 1 Red rover home
- 2 "I smell ___"
- 3 ___ Act (measure against mobsters)
- 4 Indigenous people's name for Mount Rainier
- 5 Officer with a radar gun
- 6 Shapiro of NPR
- 7 Antiquated assent
- 8 Fictional composer whose first three initials mean "A.S.A.P."
- 9 Dietary plant fiber
- 10 Foreign exchange fee
- 11 Chrysler Building style, familiarly
- 12 Request
- 13 Protective outfits for handling radioactive material
- 14 Almond-flavored liqueur
- 15 Stand in a cellar
- 16 Small entryway receptacle that might also house loose change
- 18 Skinny/dip
- 19 Poet Pound
- 23 Horror film locale, in brief
- 28 Seasoning brand that dropped the first part of its name in 2020
- 29 Prompted, in a theater
- 31 Horse/power
- 34 Tour aid
- 35 What Hester Prynne wore in a Hawthorne novel
- 36 Excessive praise
- 38 Like some eyeliners
- 40 Lineage
- 41 Major shops
- 45 Honking or screeching, for example
- 46 Bygone owner of Virgin Records
- 50 "Hello there, good ___"

ANSWERS FOUND IN NEXT WEEK'S PAPER...

1	2	3	4		5	6	7		8	9	10	11	12		13	14	15	16		
17					18				19		20					21				
22				23							24					25				
26							27		28					29						
			30				31		32						33					
34	35	36				37		38		39		40	41		42					
43				44	45				46			47			48					
49			50		51						52			53		54				
55				56				57		58		59			60					
61						62	63			64		65				66	67	68		
69				70					71		72					73				
74				75					76		77					78				
			79						80		81			82						
	83	84				85			86		87			88	89			90		
91				92		93				94					95			96		
97						98			99				100			101	102			
103									104			105		106		107				
108								109	110				111		112			113	114	115
116						117					118		119							
120						121					122							123		
124						125					126								127	

- | | | | |
|--|--|--|--|
| <p>53 One eager for radical change</p> <p>56 Kind of line that no one just stands in</p> <p>58 Party to the left of Dem.</p> <p>60 Body parts with caps</p> <p>62 How caviar might be served</p> <p>63 Will, given the opportunity</p> <p>65 Sephora purchase</p> <p>66 "Help me out here"</p> | <p>67 Fast-evaporating cleaning agent</p> <p>68 Sicilian Defense in chess, e.g.</p> <p>71 Adversary</p> <p>76 Deli devices</p> <p>78 Pickleball need</p> <p>79 Classic British sports cars</p> <p>81 Conclusion</p> <p>83 What parallel lines never do</p> | <p>84 Ones in the know</p> <p>86 Feature of rhubarb pie</p> <p>88 [Kapow!]</p> <p>89 Not plugged in, in a way</p> <p>91 Grabbed, as an opportunity</p> <p>92 Sommelier's prefix</p> <p>95 Diploma modifier</p> <p>99 Mothers, in Mexico</p> <p>102 Slumber/party</p> | <p>105 Trail/head</p> <p>107 Crib call</p> <p>109 Cotton capsule</p> <p>110 Sony co-founder Morita</p> <p>111 Promise/keeper</p> <p>113 Soul legend Redding</p> <p>114 Something to look through</p> <p>115 Mild expletive</p> <p>117 Digital picture format</p> <p>119 ___-cone</p> |
|--|--|--|--|

Public Notices

OBITUARIES

Marilyn Renee Berg

Marilyn Renee Berg, a 55-year resident of Beverly Hills, died on Friday, February 7 at age 94. She was predeceased by her parents Samuel and Estelle (Wasser) Roschelle, her husband Leon J. Berg (d. 2015) and her son David Berg (d. 2016). She was known throughout her lifetime as “Mickie”, because one summer, a camp counselor decided that there were too many campers named “Marilyn” and decreed that each of them should use a unique name.

She is survived by her children Eric and Leslie, by Leslie’s husband Charles Sagerstrom, by grandchildren Teneisha, Michael and Mandisa Berg and Tyler and Cory Sagerstrom, by one great-grandchild, and by her brother Stanley Roschelle.

Mickie was born in 1930 and grew up and attended public schools in the Borough Park section of Brooklyn, NY. She was an excellent student and skipped at least one grade. She majored in English at Brooklyn College and wanted to become a journalist. However, her parents convinced her that it was no career for a girl; as a result, she added an Education major at the last minute so that she could become a schoolteacher (although in fact she only taught for the first year or so after she graduated college). She graduated cum laude in February 1951, with a Certificate of Distinction for Student Activities.

Mickie met Leon (also from Borough Park) when he asked her out on a blind date. They were married on March 16, 1952, and resided in Fair Lawn, NJ, where Mickie had three children by the age of 30. In 1961, they moved to a suburb of Rochester, NY, where Leon had been recruited by a then-unknown company named “Xerox”.

Mickie was active in the Rochester chapter of the National Council of Jewish Women, and became president-elect in spring 1969. However, she never assumed office, because Leon had been transferred to Los Angeles by Xerox as part of its famously disastrous acquisition of a computer company.

The fall-out from that acquisition effectively ended Leon’s career at Xerox. At the time, there were almost no senior corporate finance jobs in LA, but when Mickie and Leon considered relocating to the New York City area (where most of those jobs were located), they decided that there was no way they were going to give up their lives in Beverly Hills. (After leaving Xerox, Leon co-founded a couple of start-ups and then was self-employed for the rest of his career.)

During the mid-1970s, Mickie started volunteering as a lay counselor at the Maple Center. She was interested enough that she returned to school and earned an M.A. in psychology in 1977. She was licensed by California as a marriage, family, and child counselor in 1978, and her license remained in effect through 1998, although she only practiced as an M.F.C.C. for a few years.

Mickie and Leon enjoyed attending the theatre and were collectors of art glass. They were long-time members of Temple Emanuel and participated in a Jewish Marriage Encounter session, becoming life-long friends with many of the participants. They made multiple trips to Europe, and for many years they drove to Ashland, Oregon each summer to spend two weeks at the Shakespeare festival there, only stopping those trips after 2003 when Leon’s Parkinson’s disease made it too difficult for them to travel.

Both Mickie and Leon were volunteers with the Museum Service Council at LACMA and with the Friends of the Beverly Hills Public Library. They edited and published the organizations’ internal newsletters when desktop publishing was still relatively new. For many years, Mickie worked five days a week at the Friends bookstore assessing and pricing new donations, using the free Beverly Hills shuttle to get to and from the Library after she gave up driving.

In November 2018, Mickie was diagnosed with multiple myeloma, but she was able to experience six years of good health due to the excellent care provided by Dr. Robert Decker and Dr. Sepehr Rokhsar and their associates at Tower Hematology Oncology. Her health began to decline around Thanksgiving 2024, after which she experienced several in-patient hospital stays, was discharged to a rehab center, and then came home for hospice care on February 4. In addition to her oncologists, Eric and Leslie are grateful for the care she received from her long-time physician Dr. Mark P. Goodman; from the staff at Cedars-Sinai and at Guardian Rehab. hospitals; from Skirball Hospice; from her caregivers at Accent Care, especially Mylene L., Doris K., Tiana W. and Desire M.; and for the support she received from her long-time friend Joyce Zyman.

No memorial service is planned. Donations in Mickie’s memory can be made to the Friends of the Beverly Hills Public Library.

PUBLIC NOTICES

T.S. No.: 240923601-5 Loan No.: rexford Order No. 95530062 APN: 4330-033-050 NOTICE OF TRUSTEE’S SALE YOU ARE IN DEFAULT UNDER A DEED OF TRUST DATED 5/15/2023. UNLESS YOU TAKE ACTION TO PROTECT YOUR PROPERTY, IT MAY BE SOLD AT A PUBLIC SALE. IF YOU NEED AN EXPLANATION OF THE NATURE OF THE PROCEEDING AGAINST YOU, YOU SHOULD CONTACT A LAWYER. A public auction sale to the highest bidder for cashier’s check drawn on a state or national bank, cashier’s check drawn by a state or federal credit union, or a cashier’s check drawn by a state or federal savings and loan association, or savings association, or savings bank specified in Section 5102 of the Financial Code and authorized to do business in this state will be held by the duly appointed trustee as shown below, of all right, title, and interest conveyed to and now held by the trustee in the hereinafter described property under and pursuant to a Deed of Trust described below. The sale will be made, but without covenant or warranty, expressed or implied, regarding title, possession, or encumbrances, to pay the remaining principal sum of the note(s) secured by the Deed of Trust, with interest and late charges thereon, as provided in the note(s), advances, under the terms of the Deed of Trust, interest thereon, fees, charges and expenses of the Trustee for the total amount (at the time of the initial publication of the Notice of Sale) reasonably estimated to be set forth below. The amount may be greater on the day of sale. No cashier’s checks older than 60 days from the day of sale will be accepted. Trustor: DAVID SCHWARZ Duly Appointed Trustee: Mortgage Lender Services Recorded 5/19/2023 as Instrument No. 20230328838 in book N/A, page N/A of Official Records in the office of the Recorder of Los Angeles County, California, Date of Sale: 2/20/2025 at 10:00 AM Place of Sale: Behind the fountain located in Civic Center Plaza, 400 Civic Center Plaza, Pomona CA 91766 The property situated in said Coun-

PUBLIC NOTICES

ty, California describing the land therein: A Condominium Comprised Of: A) An Undivided 7.219 Percent Interest In And To Lot 1, Of Tract No. 29685, In The City Of Beverly Hills, County Of Los Angeles, State Of California, As Per Map Recorded In Book 841 Page(S) 27 And 28 Of Maps, In The Office Of The County Recorder Of Said County. Except Units 1 To 19 Inclusive As Shown And Defined On The Condominium Plan Recorded October 15, 1974 As Instrument No 778. B) Unit 19 As Shown And Defined On The Condominium Plan Above Mentioned. Except Therefrom All Oil, Gas, Minerals And Other Hydrocarbon Substances In And Under Said Land Lying Below A Depth Of 500 Feet, But Without Right Of Entry Thereon, As Reserved In The Deed From Frank E. Rowsey And Harriet L. Rowsey, Husband And Wife, Affecting Lot 1471 Recorded July 29, 1960 In Book D-927 Page 187, Official Records And As Reserved In The Deed From Henryetta Levy, An Unmarried Woman, Affecting Lot 1472 Recorded July 29, 1960 In Book D-927 Page 188, Official Records. Amount of unpaid balance and other charges: \$1,740,246.88 * Street Address or other common designation of real property: 423 S REXFORD DRIVE #19 BEVERLY HILLS, CA 90212 *The debt is additionally secured by Deed of Trust recorded on 05/19/2023, as Instrument No. 20230328804 in the Official Records of Los Angeles County. The undersigned Trustee disclaims any liability for any incorrectness of the street address or other common designation, if any, shown above. If no street address or other common designation is shown, directions to the location of the property may be obtained by sending a written request to the beneficiary within 10 days of the date of first publication of this Notice of Sale. NOTICE TO POTENTIAL BIDDERS: If you are considering bidding on this property lien, you should understand that there are risks involved in bidding at a trustee auction. You will be bidding on a lien, not on the property itself. Placing the highest

PUBLIC NOTICES

bid at a trustee auction does not automatically entitle you to free and clear ownership of the property. You should also be aware that the lien being auctioned off may be a junior lien. If you are the highest bidder at the auction, you are or may be responsible for paying off all liens senior to the lien being auctioned off, before you can receive clear title to the property. You are encouraged to investigate the existence, priority, and size of outstanding liens that may exist on this property by contacting the county recorder’s office or a title insurance company, either of which may charge you a fee for this information. If you consult either of these resources, you should be aware that the same lender may hold more than one mortgage or deed of trust on the property. NOTICE TO PROPERTY OWNER: The sale date shown on this notice of sale may be postponed one or more times by the mortgagee, beneficiary, trustee, or a court, pursuant to Section 2924g of the California Civil Code. The law requires that information about trustee sale postponements be made available to you and to the public, as a courtesy to those not present at the sale. If you wish to learn whether your sale date has been postponed, and, if applicable, the rescheduled time and date for the sale of this property, you may call (916) 939-0772 or visit this Internet Web site www.nationwideposting.com, using the file number assigned to this case 240923601-5. Information about postponements that are very short in duration or that occur close in time to the scheduled sale may not immediately be reflected in the telephone information or on the Internet Web site. The best way to verify postponement information is to attend the scheduled sale.

PUBLIC NOTICES

NOTICE TO TENANT: You may have a right to purchase this property after the trustee auction pursuant to Section 2924m of the California Civil Code. If you are an “eligible tenant buyer,” you can purchase the property if you match the last and highest bid placed at the trustee auction. If you are an “eligible bidder,” you may be able to purchase the property if you exceed the last and highest bid placed at the trustee auction. There are three steps to exercising this right of purchase. First, 48 hours after the date of the trustee sale, you can call (916) 939-0772, or visit this internet website www.nationwideposting.com, using the file number assigned to this case 240923601-5 to find the date on which the trustee’s sale was held, the amount of the last and highest bid, and the address of the trustee. Second, you must send a written notice of intent to place a bid so that the trustee receives it no more than 15 days after the trustee’s sale. Third, you must submit a bid so that the trustee receives it no more than 45 days after the trustee’s sale. When submitting funds for a bid subject to Section 2924m, please make the funds payable to “Total Lender Solutions, Inc. Holding Account”. If you think you may qualify as an “eligible tenant buyer” or “eligible bidder,” you should consider contacting an attorney or appropriate real estate professional immediately for advice regarding this potential right to purchase. Date: 1/16/2025 Mortgage Lender Services 7844 Madison Avenue #145 Fair Oaks, CA 95628 Phone: 916-962-3453 Sale Line: (916) 939-0772 BY: Lauren Meyer, Vice President NPP0470136 To: BEVERLY HILLS COURIER 01/31/2025, 02/07/2025, 02/14/2025

WE PUBLISH DBA’s,
SUMMONS, OBITUARIES
NAME CHANGE, BIDS
AND NOTICE TRUSTEE’S
FOR MORE INFO CALL US
AT 310-278-1322

Public Notices

ORDINANCE NO. 25-O-2911

AN ORDINANCE OF THE CITY OF BEVERLY HILLS AMENDING SECTIONS 2-4-201; 2-4-202; AND 2-4-203 OF THE BEVERLY HILLS MUNICIPAL CODE RELATING TO THE PREVENTION OF PRICE GOUGING AND DECLARING THE URGENCY THEREOF

THE CITY COUNCIL OF THE CITY OF BEVERLY HILLS HEREBY ORDAINS AS FOLLOWS:

WHEREAS, the Los Angeles County Fires and Windstorm Event of January 2025 has burned over 40,000 acres, destroyed more than 12,000 residential and commercial structures, and damaged critical infrastructure; and

WHEREAS, on January 7, 2025, the Governor of California declared a State of Emergency to exist in Los Angeles and Ventura Counties due to the Fires and Windstorm Event; and

WHEREAS, thousands of Los Angeles County residents have had their lives significantly impacted through partial or complete property loss, damage or evacuation orders, and

WHEREAS, in the wake of widespread destruction, thousands of Los Angeles County residents must now purchase a myriad of goods and services to sustain their wellbeing and to begin the long process of rebuilding their lives; and

WHEREAS, California Penal Code Section 396 makes it illegal for a person, contractor, business, or other entity to increase the price of a product or service item more than ten (10) percent for the following thirty (30) days after a proclamation of a state of emergency declared by the President of the United States or the Governor, or upon the declaration of a local emergency by an official, board, or other governing body vested with authority to make that declaration; and

WHEREAS, pursuant to California Penal Code Section 396(k), municipalities are authorized to enact local legislation prohibiting excessive and unjustified increases in the prices of essential consumer goods and services when a declared state of emergency results in abnormal disruptions of the market; and

WHEREAS, Article XI, Section 7 of the California Constitution and California Government Code Section 37100 provide the City with authority to enact local ordinances to protect the health, safety, and welfare of its residents; and Government Code Section 36937(b) also authorizes the City Council to adopt an urgency ordinance to become effective immediately upon a four-fifths (4/5) vote, when such an ordinance is necessary for the immediate preservation of public peace, health, or safety; and

WHEREAS, it is the desire of this Council to amend the price gouging article of the Municipal Code to reflect consistency with state law and to include provisions that protect against price gouging for newly rented properties; and

WHEREAS, in the interest of the public peace, health or safety, it is necessary for the City Council to exercise its authority to adopt this urgency ordinance to ensure that residents are protected from excessive and unfair price increases that

could restrict access to critical supplies and services, and thereby preventing economic hardship, exploitation, and threats to public welfare.

Section 1. Urgency Declaration.

Based upon the recitals above, the City Council finds that this Ordinance is necessary for the immediate preservation of the public peace, health or safety. Excessive and unfair price increases on essential goods and services during a state of emergency can lead to civil unrest, can endanger public health by restricting access to critical supplies or services, and can threaten community safety by exacerbating economic instability and vulnerability. Beverly Hills' regulations have not been updated since 2007 and do not represent the latest thinking about how best to address price gouging. The City Council finds and determines that the immediate preservation of the public peace, health, or safety requires that this Ordinance be enacted as an urgency ordinance pursuant to Government Code Sections 36934 and 36937(b) and take effect immediately upon adoption. This Ordinance must be adopted and must become effective immediately in order to prevent the exploitation of victims of the Fires and Windstorm Event.

Section 2. The City Council hereby amends and restates Section 2-4-201 of the Beverly Hills Municipal Code to read as follows:

2-4-201: FINDINGS AND INTENT:

The city council hereby finds that during a state of emergency or local emergency, including, but not limited to, an earthquake, flood, fire, riot, storm, drought, plant or animal infestation or disease, pandemic or epidemic disease outbreak, or other natural or manmade disaster, some merchants have taken unfair advantage of consumers by greatly increasing prices for essential consumer goods and services. While the pricing of consumer goods and services is generally best left to the marketplace under ordinary conditions, when a Declared Emergency results in abnormal disruptions of the market, the public interest requires that excessive and unjustified increases in the prices of essential consumer goods and services be prohibited. It is the intent of the city council in enacting this article to protect citizens from excessive and unjustified increases in the prices charged during or shortly after a Declared Emergency for goods and services that are vital and necessary for the health, safety, and welfare of consumers, whether those goods and services are offered or sold in person, in stores, or online. Further, it is the intent of the city council that this article be liberally construed so that its beneficial purposes may be served.

Section 3. The City Council hereby amends and restates Section 2-4-202 of the Beverly Hills Municipal Code to include or revise the following definitions:

DECLARED EMERGENCY: The proclamation or declaration of a "local emergency" or "state of emergency" or "state of war emergency" as defined in section 2-4-102 of this chapter.

HOUSING: Any rental housing with an initial lease term of no longer than one year.

REPAIR OR RECONSTRUCTION SERVICES: Services performed by any Person who is required to be licensed under the California contractors' state license law (chapter 9 (commencing with Section 7000)

of Division 3 of the California Business and Professions Code), for repairs to residential or commercial property of any type that is damaged as a result of an event that led to a Declared Emergency.

TRANSPORTATION, FREIGHT, AND STORAGE SERVICES: Any service that is performed by any company that contracts to move, store, or transport personal or business property or rents equipment for those purposes.

RENTAL PRICE:

(A) For Housing rented within one year prior to a Declared Emergency, the actual Rental Price paid by the tenant.

For Housing not rented at the time of a Declared Emergency, but rented, or offered for rent, within one year prior to the Declared Emergency, the most recent Rental Price offered before the Declared Emergency.

For Housing rented at the time of a Declared Emergency but which becomes vacant while the emergency remains in effect and which is subject to any ordinance, rule, regulation, or initiative measure adopted by any local governmental entity that establishes a maximum amount that a landlord may charge a tenant for rent, the actual Rental Price paid by the previous tenant or the amount specified in subparagraph (B), whichever is greater. This amount may be increased by 5 percent (5%) if the Housing was previously rented or offered for rent unfurnished, and it is now being offered for rent fully furnished. This amount shall not be adjusted for any other good or service, including, but not limited to, gardening or utilities currently or formerly provided in connection with the lease.

(B) For Housing not rented and not offered for rent within one year prior to a Declared Emergency, 160 percent (160%) of the fair market rent established by the United States Department of Housing and Urban Development. This amount may be increased by 5 percent (5%) if the Housing is offered for rent fully furnished. This amount shall not be adjusted for any other good or service, including, but not limited to, gardening or utilities currently or formerly provided in connection with the lease.

(C) Housing advertised, offered, or charged, at a daily rate at the time of a Declared Emergency, shall be subject to the Rental Price described in subparagraph (A), if the Housing continues to be advertised, offered, or charged, at a daily rate. Housing advertised, offered, or charged, on a daily basis at the time of a Declared Emergency, shall be subject to the Rental Price in subparagraph (B), if the Housing is advertised, offered, or charged, on a periodic lease agreement after the Declared Emergency.

Section 4. The City Council hereby amends and restates Section 2-4-203 of the Beverly Hills Municipal Code to read as follows:

2-4-203: PROHIBITION AGAINST EXCESSIVE AND UNJUSTIFIED INCREASES IN CONSUMER PRICES DURING A DECLARED EMERGENCY:

A. Consumer Goods And Services:

1. Upon a Declared Emergency, and for a period of thirty (30) days following a Declared Emergency, it is unlawful for a Person to sell or offer to sell any consumer food items or goods, goods or services used for

emergency cleanup, emergency supplies, medical supplies, home heating oil, building materials, housing, Transportation, Freight, and Storage Services, or gasoline or other motor fuels for a price of more than ten percent (10%) above the price charged by that Person for those goods or services immediately prior to the Declared Emergency.

2. A Person may increase prices in excess of the amount permitted in subsection (A)(1) of this section if the seller or vendor can demonstrate that the increase in price is directly attributable to additional costs imposed on that Person by the supplier of the goods, or directly attributable to additional costs for labor or materials used to provide the services, provided that in those situations where the increase in price is attributable to additional costs imposed by the seller's supplier or additional costs of providing the goods or service during the Declared Emergency, the price represents no more than ten percent (10%) above the total of the cost to the seller plus the markup customarily applied by the seller for that good or service in the usual course of business immediately prior to the Declared Emergency.

3. A Person offering an item for sale at a reduced price immediately prior to a Declared Emergency may use the price at which it usually sells the item to calculate the price increase permitted pursuant to this subsection.

B. Construction, Repair, And Cleanup Services:

1. Upon a Declared Emergency, and for a period of one hundred eighty (180) days following a Declared Emergency, it is unlawful for a Person to sell or offer to sell any Repair or Reconstruction Services or any services used in emergency cleanup for a price of more than ten percent (10%) above the price charged by that Person for those services immediately prior to the Declared Emergency.

2. A Person may increase prices in excess of the amount permitted in subsection (B)(1) of this section if the Person can demonstrate that the increase in price is directly attributable to additional costs imposed on that Person by the supplier of the goods, or directly attributable to additional costs for labor or materials used to provide the services, provided that in those situations where the increase in price is attributable to the additional costs imposed by the Person's supplier or additional costs of providing the service during the Declared Emergency, the price represents no more than ten percent (10%) above the total of the cost to the Person plus the markup customarily applied by the Person for that good or service in the usual course of business immediately prior to the Declared Emergency.

3. A Person offering a service at a reduced price immediately prior to a Declared Emergency may use the price at which he or she usually provides the service to calculate the price increase permitted pursuant to this subsection.

C. Hotel And Motel Rates:

1. Upon a Declared Emergency, and for a period of thirty (30) days following a Declared Emergency, it is unlawful for an owner or operator of a hotel or motel to increase the hotel or motel's regular rates, as advertised immediately prior to the Declared Emergency, by more than ten percent (10%).

CONTINUE TO PAGE 16>>

Public Notices

2. A hotel owner or operator may increase prices in excess of the amount permitted by subsection (C)(1) of this section if the owner or operator can prove that the increase in price is directly attributable to additional costs imposed on it for goods or labor used in its business, to seasonal adjustments in rates that are regularly scheduled, or to previously contracted rates.

D. Rental Property Rates:

1. Upon a Declared Emergency, and for a period of thirty (30) days following a Declared Emergency, it is unlawful for any Person to increase the Rental Price, as defined in Section 2-4-202, advertised, offered, or charged for Housing, to an existing or

prospective tenant, by more than ten percent (10%) of the regular rate, as advertised immediately prior to the Declared Emergency.

2. A Person may increase prices in excess of the amount permitted by subsection (D)(1) of this section if the Person can prove that the increase in price is directly attributable to additional costs for repairs or additions beyond normal maintenance that were amortized over the rental term that caused the rent to be increased greater than ten percent (10%) or that an increase was contractually agreed to by the tenant prior to the Declared Emergency.

3. It shall not be a defense to a prosecution under this subdivision that an increase in Rental Price was based on the length of the rental term, the inclusion of additional goods or services, except as provided in Section 2-4-202 with respect to furniture, or that the rent was offered by, or paid by, an insurance company, or other third party, on behalf of a tenant. This subdivision does not authorize a landlord to charge a price greater than the amount authorized by a local rent control ordinance.

Section 5. Severability. If any provision of this Ordinance is held invalid by a court of competent jurisdiction, such provision shall be considered a separate, distinct and independent provision and such holding shall not affect the validity and enforceability of the other provisions of this Ordinance.

Section 6. Publication. The City Clerk shall cause this Ordinance to be published at least once in a newspaper of general circulation published and circulated in the City within fifteen (15) days after its passage in accordance with Section 36933 of the Government Code, shall certify to the adoption of this Ordinance and shall cause this Ordinance and the City Clerk's certification, together with proof of publication, to be entered in the Book of Ordinances of the Council of this City.

Section 7. Effective Date. This Ordinance is adopted as an urgency ordinance for the immediate preservation of the public peace, health, or safety within the meaning of Government Code Section 36937(b), and therefore shall be passed immediately upon its introduction and shall take effect immediately upon its adoption by a minimum 4/5 vote of the City Council.

Section 8. Certification. The City Clerk shall certify to the adoption of this Ordinance.

Adopted: February 5, 2025
Effective: February 5, 2025

Lester J. Friedman
Mayor of the City of Beverly Hills, California

ATTEST:
HUMA AHMED (SEAL)
City Clerk

APPROVED AS TO FORM:
LAURENCE S. WIENER
City Attorney

APPROVED AS TO CONTENT:
NANCY HUNT-COFFEY
City Manager

YES: Councilmembers Wells, Corman, Mirisch, Vice Mayor Nazarian, and Mayor Friedman
NOES: None
CARRIED

Gindi Maimonides Academy is an equal opportunity employer and does not discriminate in its hiring of personnel, nor does it discriminate in its admissions policies.

FICTITIOUS BUSINESS NAME STATEMENT
2025000053 The following is/are doing business as: **BRANDEJA ENTERPRISES 9546 W. PICO BLVD, LOS ANGELES, CA 90035**; Roxanne Debby Jasper 9546 W. Pico Blvd. Los Angeles, CA 90035; The business is conducted by: **AN INDIVIDUAL** registrant(s) has HAS begun to transact business under the name(s) listed on February 2004: **Roxanne Debby Jasper, Owner.** Statement is filed with the County of Los Angeles: January 2, 2025; Published: February 14, 21, 28, March 7, 2025 LACC N/C

SUPERIOR COURT OF CALIFORNIA,
COUNTY OF LOS ANGELES
**CASE NO: 25SMCP00039
ORDER TO SHOW CAUSE
FOR CHANGE OF NAME**

In the Matter of the petition of: **Ara Kashanian**

To all interested person(s): Petitioner: **Ara Kashanian** current residence address: **2473 Crestview Drive, Los Angeles, CA 90046** filed a petition with the **Superior Court of California, County of Los Angeles, 1725 Main St. Santa Monica, 90401. Santa Monica Courthouse, on January 29, 2025** for a Decree changing names as follows:
Present Name: **Ara Kashanian**
Proposed Name: **ARA YEGANEH**

The court orders that all persons interested in this matter shall appear before this court at the hearing indicated below to show cause, if any, why the petition for change of name should not be granted. Any person objecting to the name changes described above must file a written objection that includes the reasons for the objection at least two court days before the matter is scheduled to be heard and must appear at the hearing to show cause why the petition should not be granted. If no written objection is timely filed, the court may grant the petition without a hearing.

NOTICE OF HEARING:
Date: February 28, 2025
Time: 8:30 AM **Department:** K
The address of the court is:
**1725 Main Street,
Santa Monica, CA 90401**
Reason for name change: Petitioner is already known by her proposed name wishes to be known by her proposed name in all personal/business affairs.
I declare under penalty of perjury under the laws of the State of California that the foregoing is true and correct.
Signed: **Ara Kashanian**

Judge of the Superior Court:
Lawrence H. Cho
Clerk: David W. Slayton
Deputy: L. Kulkin
Dated: January 29, 2025
Published: 01/31/25, 02/07/25, 02/14/25, 02/21/25 BHC-R29277

ORDINANCE NO. 25-O-2910

AN ORDINANCE OF THE CITY OF BEVERLY HILLS AMENDING BEVERLY HILLS MUNICIPAL CODE §10-3-2745 TO MODIFY MAXIMUM ALLOWABLE FLOOR AREA RATIO LIMITATION FOR CERTAIN BUILDINGS LOCATED IN C-3 COMMERCIAL ZONES

THE CITY COUNCIL OF THE CITY OF BEVERLY HILLS HEREBY ORDAINS AS FOLLOWS:

Section 1. On November 14, 2024, the Planning Commission held a duly noticed public hearing after which it adopted Resolution No. 2075, recommending that the City Council amend a portion of Title 10 (Planning and Zoning) of the Beverly Hills Municipal Code to amend the maximum allowable floor area ratio (FAR) limitation for certain buildings located in the C-3 Commercial zones to allow properties within the Business Triangle to increase the maximum floor area ratio (FAR) as a result of the conversion of the ground level of an existing parking structure abutting a public street to retail business(es), subject to the approval of a Development Plan Review and amend the City's General Plan Land Use Map accordingly to note the change in permissible density for certain buildings (collectively, the "Amendments"). On January 28, 2025, the City Council held a duly noticed public hearing, received public testimony, and thereafter introduced this Ordinance.

Section 2. This Ordinance and the Amendments, in conjunction with the proposed project located at 450 North Roxbury Drive (collectively the "Project") were assessed in accordance with the authority and criteria contained in the California Environmental Quality Act (CEQA), the State CEQA Guidelines, and the environmental regulations of the City. The Project includes the conversion of 6,797 square-feet (SF) of existing parking spaces located on the ground floor of an existing parking structure at 450 North Roxbury Drive to retail uses. The Project has been assessed in accordance with the authority and criteria contained in the California Environmental Quality Act (CEQA, Public Resources Code Sections 21000 et seq.), the State CEQA Guidelines (California Code of Regulations, Title 14, Sections 15000 et seq.), and the environmental regulations of the City. An Initial Study/Negative Declaration has been prepared to evaluate the potential environmental effects that could result from the construction and operation of the Project. The City Council adopted the Initial Study/Negative Declaration as part of its approval of the related General Plan Amendment for the Project, and concluded that the Project would not result in any significant environmental impacts and that no mitigation is necessary.

Section 3. The Amendments are consistent with the objectives, principles, and standards of the General Plan. The proposed Amendments further the goals and policies set forth in the General Plan for commercial uses located throughout the City. Specifically, they support the General Plan's goals and policies outlined in the Land Use Element and the Open Space Element to maintain and enhance the character of the City's business districts, exhibit a high level of site planning and design, promote pedestrian-active streets, accommodate diverse

uses for customers that also support the needs of local residents, support and retain high-quality businesses, and ensure compliance with the City's sustainability goals.

Section 4. The City Council hereby amends §10-3-2745 of Article 27 of Chapter 3 of Title 10 of the Beverly Hills Municipal Code to read as follows:

A. Except as may be expressly provided in this chapter, the maximum floor area ratio on any site area shall not exceed 2.0. For the purposes of this section, "site area" shall include only those portions of the site which are in a nonresidential zone, including the C-5 zone.

B. Notwithstanding subsection A, the maximum floor area ratio on a site located within the Business Triangle, as defined in Section 10-3-2703, may be increased as a result of the conversion of the ground level of an existing parking structure abutting a public street to retail business(es), as defined in Section 10-3-100, up to a depth of 70'-0" from the front property line, subject to approval of a Development Plan Review pursuant to Section 10-3-3100. The additional floor area for the conversion shall not exceed 10% of the maximum allowable floor area for the site, regardless of the existing building square footage.

Section 5. Severability. If any section, subsection, subdivision, sentence, clause, phrase, or portion of this Ordinance or the application thereof to any person or place, is for any reason held to be invalid or unconstitutional by the final decision of any court of competent jurisdiction, the remainder of this Ordinance shall be and remain in full force and effect.

Section 6. Publication. The City Clerk shall cause this Ordinance to be published at least once in a newspaper of general circulation published and circulated in the City within fifteen (15) days after its passage in accordance with Section 36933 of the Government Code, shall certify to the adoption of this Ordinance, and shall cause this Ordinance and her certification, together with proof of publication, to be entered in the Book of Ordinances of the Council of this City.

Section 7. Effective Date. This Ordinance shall go into effect and be in full force and effect at 12:01 a.m. on the thirty-first (31st) day after its passage.
Adopted: February 5, 2025
Effective: March 8, 2025

LESTER J. FRIEDMAN
Mayor of the City of
Beverly Hills, California

ATTEST:
HUMA AHMED (SEAL)
City Clerk

APPROVED AS TO FORM:
LAURENCE S. WIENER
City Attorney

APPROVED AS TO CONTENT:
NANCY HUNT-COFFEY
City Manager

MICHAEL FORBES, AICP
Director of Community Development

YES: Councilmembers Wells, Corman, Mirisch, Vice Mayor Nazarian, and Mayor Friedman
NOES: None
CARRIED

Classifieds

ANNOUNCEMENTS

♥ *Paula Anderson:* ♥

My Valentine



*YOU
are the
only 10
there is.*



Bob Rubin



TO ADVERTISE YOUR SERVICES
IN THE **COURIER** CLASSIFIEDS
CALL US AT 310-278-1322

02 ESTATE MANAGEMENT



Santa Barbara
ESTATE MANAGEMENT

With over 30 years of experience, I specialize in discreetly servicing the needs of high-net-worth individuals, ensuring their safety and the protection of absentee owners' properties with integrity and pride. My top priority is safeguarding the identity of my clients while collaborating closely with them to develop a tailored plan that addresses their specific needs.

805-319-5364

santabarbaraestatemangement@gmail.com

Licensed & Insured

www.santabarbaraestate.management



08 LEGAL SERVICES

PERSONAL INJURY & ACCIDENT

Law Offices of
Jeffrey A. Shane

For Winning Settlements and Verdicts



310 820 3644

js@jeffreysbane.com

Beverly Hills/ Brentwood

www.jeffreysbane.com

LEGAL PROBLEMS?

**TOP "A/V" RATED BEVERLY HILLS
LAW FIRM CAN HELP YOU.**

Specializing In: Divorce, Collection of
Delinquent Support & Personal Injury Auto &
Motorcycle Accident Cases, Civil, Real Estate,
Family Law & Auto Accidents

**No Recovery, No Fee!
Free Consultation.**

**LAW OFFICES OF
BRADFORD L. TREUSCH**
• 310/557-2599 •

"A/V" RATED FOR
OVER 35 YEARS.
www.Treusch.net



SUPER LAWYER

• **Bradford L. Treusch** •
SuperLawyers.com

12 ACCOUNTING SERVICES

KATHY KIM, CPA

1040, 1120, 1065

PREPARATION

FORMER H&R BLOCK

TAX PRO

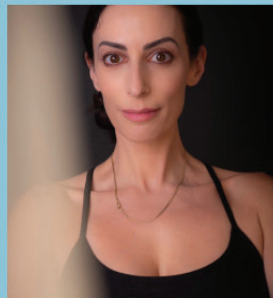
Beverly Hills and

Los Angeles Office

Call 213-887-1918

mjkimcpa@gmail.com

18 PERSONAL ORGANIZER



JENNY OF
ALL TRADES

The Los Angeles
professional
organizer everyone
needs in their lives.

Jennydun18@gmail.
com, 310 989-3697.

Instagram
@jennyddesign



Before



After



**COURIER
CLASSIFIEDS**

50 DRIVING SERVICES

**PRIVATE
CHAUFFEUR**

*** AVI ***

20 yrs experience

Own limo

or client car.

Call or text

323-353-5000

68 DOMESTIC SERVICES

**HOUSE
CLEANING
SERVICES**

Please call

323-331-2861

88 ELDERLY CARE

**Amazing CAREGIVER
Service**

We understand your needs,
please let us know how we
can help you.

Grace (310) 963-8374

**DEPENDABLE CARE INC.
IN-HOME CARE**

Caregivers / Homemakers

Licensed / Insured

Serving LA County Since 1992



Teri Lieberman, Administrator

818-489-3208 • Terileb@gmail.com

**HOME CARE &
NURSING SERVICE**

English & Hungarian
speaking caregiver.

Antonella Tallian 213/400-3682

antonellatallian@gmail.com

**ARE YOU A SENIOR AND
NEED ASSISTANCE?
We can help YOU!**

We provide experienced Caregivers, CNA's & HHA's
for seniors needing companions to drive them to
doctors, prepare meals, light housekeeping, etc...

LICENSED • BONDED • INSURED

CALL LISA 24HRS.

323/877-8121 • 323/806-3046

**EXECUTIVE
REFERRAL CARE**

"CARE YOU CAN COUNT ON"

(Formerly Executive Home Care, Inc.)

OVER 24 YEARS OF SERVICE

AFFORDABLE HOMECARE

• Caregivers • CNA • Companions •

• Live-In / Live-Out •

Experienced • Background Checked

310.859.1555

richard@executivereferralcare.com

BBB A+ Rated Insured Executive Referral Care is a referral agency.

Classifieds

90
EMPLOYMENT
OPPORTUNITIES

EconONE Research, Inc has job openings in LA, CA: Economist (Ref #93821): Apply econ theory, math stats & econ tools to ans questions w/in healthcare & pharmaceutical indstry. Telecomm permitted. \$120,000-\$135,000/year. Consultant (Ref#: 13515): Dsgn & mg discrete quantitative & qlttv anlys. Telecomm permitted. \$150,259-\$154,500/year. Apply@jobpostingtoday.com

270
CONDOS
FOR SALE

California Dreaming
Realty, Inc.

CENTURY PARK EAST
2 BEDROOMS + DEN
\$999,000

17th Florner unit
Panoramic Views

Ocean, City and Mountains
2 Balconies,
largest in complex.

• **DIANA COOK** •
468 N. Camden, BH 90210
2DianaCook@gmail.com
310-344-0567

425
HOUSES
FOR LEASE

BEVERLY HILLS
4 BDRM, 4 1/4 BA.
+ DEN + BONUS
SPACIOUS HOME
Airy, Bright, Sunny
on Quiet Street.
High ceilings and
recessed lighting.
\$6,990/MO.
400 Block of South
Swall Drive.
Call 310/721-3956

435
GUESTHOUSE
FOR LEASE

HEART OF BEVERLY HILLS
2 Story Guesthouse
1200 square feet.
2 BEDROOM, 2 BATH
with washer & dryer,
kitchenette, patio
and 2 car garage.
\$8,800/MO.
Available 03/01/25,
Whatsapp or Text to:
213/999-7532

BEVERLY HILLS
North Of Sunset
NEWLY BUILT
1 BEDROOM
GUESTHOUSE
Laundry on site and
garage parking. No
pets. \$3,200/MO.
All utilities included
Call 310-862-2027

440
APTS/CONDOS
FOR LEASE

BEVERLY HILLS
CHARMING
2 BEDROOM 1 BATH
with hardwood floors,
very close to markets.
Parking included with
EV charging available.
\$3,400/MO.
David 310/488-1785

440
APTS/CONDOS
FOR LEASE

PICO ROBERTSON
1455 S. Wooster Street



COMPLETELY REMODELED
STUDIO
GREAT LOCATION
CLOSE TO CENTURY CITY
AND BEVERLY HILLS

Large Spacious Units, All New Stainless Appliances,
Storage Bin, 1 Car Parking, Quiet Building, Intercom Entry.

FOR INQUIRIES CONTACT
HAROLD TENNEN 310 850-4600

PART-TIME WORK
Requires Proficiency In
APPFOLIO

Real Estate Accounting
Please send Experience and Contact
Information easter1659@aol.com

248
BUSINESS FOR SALE

**WANT TO SELL
YOUR BUSINESS?**

- Nationwide
- 100k-500k Annual Cashflow
- \$500k-\$2M Price
- Minimum 5 Years Old

Call 424-245-5637

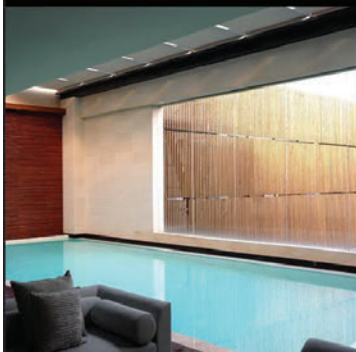
BEL AIR CREST
House for lease
in gate guarded
community.

4 BD. + 4 BA. + DEN
Over 3000 s.f. with
recess lighting,
hardwood floors
throughout
and laundry room.
\$10,995/MO.
Gary 310-995-0075

COURIER
CLASSIFIEDS
310-278-1322

268
REAL ESTATE SERVICES

PEZZINI LUXURY HOMES



**THINKING
ON SELLING
YOUR HOME?**

CALL TODAY!
20 Years Experience.

Ofc: (310) 275-2076 | Cell: (818) 445-9557
Luis@Pezzini.com | www.pezziniluxuryhomes.com
8335 Sunset Blvd Ste. 224 | Los Angeles, CA 90069

**FABULOUS MID-CENTURY
MODERN BUILDING**
IN PRIME LOCATION BETWEEN
SANTA MONICA & SUNSET BLVD.



Completely remodeled spacious units.
Engineered wood floors, recess lighting,
pool, laundry facility and secured
subterranean garage parking.
2 BDRM, 2 BATHS • \$3,000/MO.

917 LARRABEE STREET
424/313-4176

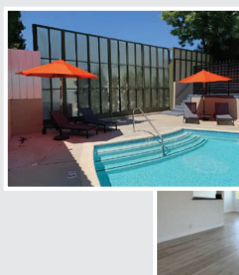
BEVERLYWOOD
2 BDRMS, 2 BATHS

Secured building with
intercom entry, balcony,
kitchen with built-ins,
A/C, on-site laundry,
gated garage. Close
to BH & Century City.
\$2,850/MO.
Call Mary for showing
(661) 230-8998

SHERMAN OAKS
NEWLY REMODEL
2 BDRM., 2 BATH

A/C, fireplace and
includes 2 parking.
Closes to mall, easy
access to freeways.
\$2,590/MO.
Call 310/383-2524

BRENTWOOD



2 BDRM + 2 BATHS
• **Oversized Units** •

Balcony w/ view of golf course,
dishwasher, controlled
access, elevator, pool, prkg.
Close to shopping & school.
Call 424-877-3993

12221 - 12225 San Vicente Blvd.

FOR LEASE

BEVERLY HILLS
221 S. Doheny Dr.
1 BDRM + 1 BA.
2 BDRM + 2 BA.



Bright units w/control
access, pool, elevator,
close to shopping area.
Call 424-877-3839

BEVERLY HILLS
443 S. Oakhurst Dr.

2 BDRM + 2 BA.



Balcony, dishwasher,
elevator, intercom entry,
on-site, laundry, parking.
424-877-3990

BEVERLY HILLS
8725 Clifton Way
1 BDRM + DEN + 2 BA.



control access, park-
ing, intercom entry,
laundry facility, close
to shopping area.
424-877-3828

COURIER
CLASSIFIEDS

508
CARS WANTED

WE BUY CLASSIC CARS

Running or not / Foreign & domestic
Porsche, Mercedes, Ford, Chevy, etc.



Please call
Steven at
310-926-9343

580
PETS

MALTIPOO PUPS FOR SALE:

CONTACT LESLY
310-702-8060

588
ESTATE JEWELRY

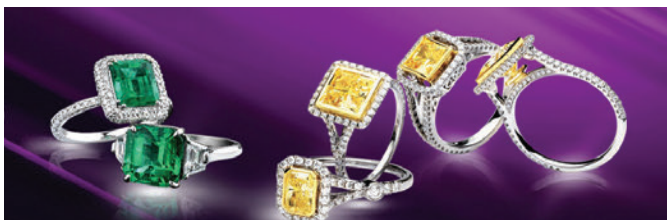


Like having an Uncle in the Jewelry Business

RZACH Estate Jewelry, Diamonds, Watches, Guitars - Sales & Repairs
Since 1988
Across from the Peninsula Hotel 9897 Santa Monica Blvd. BH
@rzachjewelry (310) 859-8666

ANTIQUES / JEWELRY
BUY & SELL

Luxury Jewels of Beverly Hills



BRING US YOUR WATCHES, DIAMONDS, ESTATE JEWELRY,
GOLD/SILVER, COINS, ART & ANTIQUES. WE HAVE
OVER 100 COMBINED YEARS OF EXPERTISE IN BUYING,
SELLING AND APPRAISAL.

WE PAY PREMIUM PRICES!
"WE BEAT MOST AUCTION HOUSE PRICES"

BUY • SELL • LOAN • TRADE • CONSIGN

203 S. BEVERLY DRIVE, BEVERLY HILLS 90212
310-205-0093 • INFO@LJOBH.COM

license #19100971

TO ADVERTISE IN OUR SERVICE DIRECTORY
CALL US AT 310-278-1322
WWW.BEVERLYHILLSCOURIER.COM

COURIER SERVICE DIRECTORY

ELECTRICAL

CARE ELECTRIC

ALL ELECTRICAL NEEDS

RESIDENTIAL / COMMERCIAL

EXPERT REPAIR SMALL JOBS OK

FULLY INSURED • ALL WORK GUARANTEED

310-901-9411 LIC#568446

FLOORING

WOOD FLOORS

- Sanding
- Staining
- Bleaching
- Matching
- Finishing

310/849-6019

30 Years of
Artistic Experience.

HANDYWOMAN
SERVICES

AFFORDABLE HANDYWOMAN



- **Molly Hanmer** •
does home repairs,
installs tv's,
puts up shelves,
curtains & more.
- **No Job Too Small** •
831/236-2116

20% Off first job
"Mention "BH Courier"

GARDENING / LANDSCAPING



Licensed & Insured
Emergency Services
Available 7 days/week

- Tree Care / Removal
- Topping / Shaping
- Pruning / Thinning
- Stump Grinding
- Landscape Maintenance
- Hill Side Cleaning
- Clean Ups
- Sprinkler System
- Planting

Call Us Today

(818) 470-3094

Follow us on...



FREE ESTIMATES

IRON GATES

IRONGUYS

Architectural Iron Gates
& Automatic Gates



BLACK MIRROR GATES
HORIZONTAL IRON ART
MODERN IRON WORKS
SECURITY FENCE AND GATES
IRON RAILS • STAINLESS STEEL CABLE RAILS
GATE OPERATORS • GATED COMMUNITY
WOOD AND IRON WORKS

www.IRONGUYS.com
323-804-2578

ROOFING

ORSINIS ROOFING

New Roofs-Repairs

Install Rain Gutters and Skylights
"Roof Inspector"

New Roofs, repairs of any kind Flet Shingle,
Tile, Slate, Metal Torch Down, Wood Shake.
Install Rain Gutters and skylights.

Excellent References
40 years in business
gianniorsini@gmail.com



24/7 EMERGENCY SERVICES

310-351-1743
213-675-3769
800-213-6806

L.A. STRONG

The Watermark is Here For You

Los Angeles has shown its resilience and strength in the face of unimaginable challenges. At **The Watermark at Westwood Village**, we're here to help, offering a place to rest, recharge, and feel supported.

Our move-in-ready senior living apartments are designed to make your transition as seamless as possible. With gourmet meals, genuine connections, and personalized care, we're welcoming you with open arms into a community that feels like family.



EXCLUSIVE OFFER FOR THOSE AFFECTED BY THE FIRES:*

In addition to our "\$15k, Your Way" incentive, which can go toward moving expenses, community fees, or customizing your new home, we're offering an additional \$3,000 savings to those impacted by the fires—that's \$18,000 to help you start fresh.

Let us lend a hand as you find your new beginning. Call us today to schedule your tour and learn more about this special offer.



Together, we are L.A. strong

THE WATERMARK
AT WESTWOOD VILLAGE

ÉLAN COLLECTION

310.331.8063

WestwoodVillageSeniorLiving.com

947 Tiverton Avenue, Los Angeles, CA 90024

ACTIVE INDEPENDENT LIVING | ASSISTED LIVING | MEMORY CARE



* Offer valid for new move-ins occurring on or before 2/28/25. Offer excludes respite stays. Prices, plans and programs subject to change. ©2025 Discovery Management Group. All Rights Reserved. Prices, plans and programs are subject to change or withdrawal without notice. Void where prohibited by law. Managed by Discovery Management Group. RCFE LICENSE #198320127 WMWV-0048 1/25.

