

IN THIS ISSUE

Off the Chart Awards Recognizes Nurses with \$10,000 Awards 4



Patek Philippe Celebrates New Rodeo Drive Location 5



Soprano Golda Zahra Performs at Beverly Canon Gardens 6



Courier Calendar 2

News 4

Community 6

Birthdays 10

Fun and Games 12

Public Notices 16

Classifieds 17

THE WEATHER, BEVERLY HILLS CA		
	Friday	83° 62°
	Saturday	81° 65°
	Sunday	78° 63°
	Monday	73° 59°
	Tuesday	72° 59°
	Wednesday	71° 59°
	Thursday	76° 50°

El Rodeo Elementary School Promotion Marks a Milestone

BY BIANCA HEYWARD

Laughter and cheers filled the air as the fifth-grade class of El Rodeo Elementary School walked onto the auditorium stage for their promotion ceremony on May 28, marking the end of an unforgettable elementary school journey. But this year, the event was more than just a rite of passage—it was a celebration of resilience, growth and new beginnings. This group of students holds a special place in the school’s history. They were in

kindergarten when the COVID-19 pandemic abruptly changed the world, and virtual learning, mask mandates and social distancing became part of their early education. The class of 2025 is also the first to graduate from the school since reconfiguration in 2019 when all students were relocated to Hawthorne Elementary School during the construction of the new campus. “This year is the year of firsts,” Principal Sarah Kaber said. “You were the first to See EL RODEO, page 8



The El Rodeo Elementary School fifth-grade promotion took place on May 28. Photo by Bianca Heyward

Fire Officials Hold Education Campaign for Wildfire Zoning Maps

BY JESSICA OGILVIE

Officials from the Beverly Hills Fire Department on May 28 held an information session on revised wildfire zoning maps recently disseminated by the state, which designate new areas in Beverly Hills as very high fire hazard severity zones (VHFHSZ). At a second-floor room in City Hall, Beverly Hills Fire Chief Gregory Barton and Assistant Fire Chief - Fire Marshal Trevor Richmond presented information to nearly a dozen attendees about how the maps were created and what they will mean for residents. The new maps, which classify fire hazard severity zones throughout the state, were released by the California Department of Forestry and Fire Protection (Cal Fire) on

March 24. The maps designate regions throughout the state as moderate, high or very high fire hazard severity zones. The new VHFHSZ areas in Beverly Hills are primarily located south of Sunset Boulevard in residential blocks stretching south to Lomitas and Elevado Avenues. Residents whose property is located in VHFHSZ must adhere to state laws that govern maintenance in the areas immediately around their homes, such as the reduction of intense fuel within 5 feet of the building and managing vegetation up to 100 feet from the building. To create the new maps, Cal Fire used updated systems that account more accurately for wind patterns that might blow See WILDFIRE MAPS, page 14

BHHS to Expand College and Career Counseling Services

BY JESSICA OGILVIE

The Beverly Hills Unified School District (BHUSD) Board at its May 27 meeting approved the expansion of the College and Career Counseling Center at Beverly Hills High School by adding several new counselors. The board also approved the implementation of a Spanish dual language program in the city’s elementary schools. “I think this is the most exciting, phenomenal, amazing board meeting I have attended in the past two-and-a-half years,” said Board Vice President Judy Manouchehri of the two new initiatives. In a presentation about the proposed restructuring of the College and Career Counseling Center, Dr. Dustin Seemann, the district’s assistant superintendent, education services, articulated the need for more counselors at the high school level. Currently, the College and Career Center employs five academic counselors, one college counselor and two wellness counselors. Seemann recommended transitioning that structure to four freshman and sophomore transition and academic counselors, four junior and senior academic and college counselors, one wellness counselor and one director of counseling. See BHUSD, page 8

Synthetic Turf Ban Moves to Council

BY JESSICA OGILVIE

The Beverly Hills Planning Commission at their May 22 meeting voted to approve a ban on synthetic turf in the city’s front lawns. The ban would prohibit the installation of new synthetic turf and allow existing owners of synthetic turf 15 years to remove it. Residents will still be allowed to have synthetic turf in their side and backyards. The commission approved the ordinance in a 3-0 vote, with Vice Chair Jeff Wolfe and Commissioners Lou Milkowski and Gary Ross voting in favor. Chair Terri Kaplan and Commissioner Myra Demeter were not present at the meeting. See PLANNING COMMISSION, page 14

Courier Calendar

NOW - JUNE 15
THEATRE 40: “BECKY’S NEW CAR”
THURS.-SAT. 7:30 P.M.
SUN. 2 P.M.
Theatre 40 presents “Becky’s New Car,” written by Steven Dietz and directed by Cate Caplin. Dissatisfied in her marriage and her job, Becky is given a new car and receives the attentions of a rich man. Will her new car drive her to a new life? This production explores the comedic possibilities. Theatre 40 is located at 241 S. Moreno Drive, Beverly Hills. Free underground parking is available. theatre40.org

NOW - JUNE 21
GAGOSIAN: “PAUL MCCARTNEY REARVIEW MIRROR: PHOTOGRAPHS, DECEMBER 1963–FEBRUARY 1964”
TUES.-SAT. 10 A.M.-5:30 P.M.
Gagosian is pleased to present “Rearview Mirror,” an exhibition of recently rediscovered photographs by Paul McCartney. Featuring 36 works composed of images taken between December 1963 and February 1964, it presents a rare opportunity to acquire selected photographs—including some previously unseen—from McCartney’s personal archive. It is the first time McCartney has made signed editions of his photographs available. Evoking an indelible snapshot of Beatlemania as it grew into a global phenomenon, the photographs on view embody a poignant intersection of time, place and personality. Taken together, they form a significant contribution to the visual record of the era, not only due to their unique perspective, but also because they reveal an unheralded aspect of McCartney’s versatile talents. The mix of black-and-white and color prints includes self-portraits, unguarded views of McCartney’s bandmates, and vivid depictions of the pandemonium that

greeted them at every turn. Admission to the Gagosian is free. Gagosian is located at 456 N. Camden Drive, Beverly Hills. gagosian.com

NOW - JUNE 30
HOLOCAUST MUSEUM LA: “DIE PLAGUE”
10 A.M.-5 P.M.
Harley Gaber, an avant-garde American composer and visual artist, is celebrated for his minimalist soundscapes and powerful visual collages. “Die Plague,” Gaber’s largest work, is made up of hundreds of collaged canvases, reflecting his explorations of art and history—from the Weimar Republic through World War II. A patchwork of archival images that evoke fragmented narratives and organized chaos, Gaber’s monumental project “Die Plague” (The Plague) explores themes of 20th-century history, offering moments of stillness amid intensity to better understand the past and its impact on the present. The installation opens up many questions regarding the collective and individual, propaganda and education and the role of human beings in the course of history. Tickets are \$15 for adults, \$10 for seniors or members of the military and free for EBT cardholders, teachers and students with ID and children 17 and under. Admission is free on Sunday. Holocaust Museum LA located at 100 The Grove Drive, Los Angeles. holocaustmuseumla.org

NOW - JULY 12
LACMA: “REALMS OF THE DHARMA: BUDDHIST ART ACROSS ASIA”
MON.-TUES., THURS. 11 A.M.-6 P.M.
FRI. 11 A.M.-8 P.M.
SAT.-SUN. 10 A.M.-7 P.M.
“Realms of the Dharma: Buddhist Art Across Asia” presents an international survey of Buddhism and Buddhist art,

beginning with the religion’s origins in India and following its spread through mainland and island Southeast Asia (Myanmar [Burma], Thailand, Cambodia, Vietnam and Indonesia), the Himalayas (Kashmir, Nepal, and Tibet), and East Asia (China, Korea and Japan). Incorporating 180 masterpieces of pan-Asian Buddhist art, the exhibition introduces key concepts of Buddhist thought and practice viewed through the prism of rare and extraordinarily beautiful Buddhist sculptures, paintings, and ritual objects. Drawn from LACMA’s permanent collection, with several significant loans from private collections, the exhibition explores the life of the Buddha, the role of the bodhisattva or Buddhist savior, Buddhist cosmology and such key concepts as dharma, karma, nirvana, mantra, mudra and mandala. The show will focus on art associated with such key phases of Buddhism as Theravada (early monastic Buddhism), Mahayana (the “Great Vehicle”), Vajrayana (the “Diamond Vehicle”—tantric or esoteric Buddhism) and Chan (Zen). Tickets are \$23 for adults, \$19 for seniors, students with ID and visitors with a disability. Admission is free for youths 17 and younger. Admission is also free on Mon.-Fri. after 3 p.m. LACMA is located at 5905 Wilshire Blvd., Los Angeles. lacma.org

NOW - AUG. 31
ICA LA: “JACKIE CASTILLO: THROUGH THE DESCENT, LIKE THE RETURN”
Through the mediums of film photography, sculpture and installation, Los Angeles artist Jackie Castillo (b. 1990, Orange, CA) considers the relationship between city infrastructure, collective memory, and the isolation and anxiety felt by the working class. Raised in Santa Ana, California, to parents who

immigrated from Guadalajara, Mexico, Castillo’s practice reflects a close attention to demographic and structural changes across time and place, and a profound consideration of the fraught systems of labor that sustain our everyday lives. “Through the Descent, Like the Return”—the artist’s first institutional solo exhibition—considers architecture as a site of memory, holding histories of labor and generations of lived experience in its constitution and its remnants. Admission to ICA LA is free with timed-entry reservations online. ICA LA is located at 1717 E. 7th St., Los Angeles. theicala.org

MAY 31 - JUNE 1
WESTSIDE BALLET OF SANTA MONICA: “MASTERS OF MOVEMENT: BALLET THROUGH THE CENTURY”
Westside Ballet of Santa Monica presents “Masters of Movement: Ballet through the Centuries” at the Eli and Edythe Broad Stage. The event includes a Saturday Gala with New York City Ballet principals Tiler Peck and Roman Mejia, as well as the Spring Showcase performances featuring various ballet excerpts and contemporary works. The Gala is on Saturday, May 31, at 7 p.m. with a reception at 5:30 p.m., and the Spring Showcases are on May 31 and June 1 at 1 p.m. Tickets range from \$50 to \$195, with a special discount code “LA25” for \$70 off the Gala. Group rates are available, and a portion of proceeds supports the Fire Relief Scholarship Fund. westsideballet.com

JUNE 4
ACADEMY MUSEUM OF MOTION PICTURES: “LITTLE MISS SUNSHINE” IN 35MM
7:30 P.M.
The Academy Museum presents a screening of “Little Miss Sunshine.” Seven-year-old Olive and her dysfunctional family pile into a trouble-plagued Volkswagen van and road trip to a child beauty contest in this sleeper hit directed by the team of Jonathan Dayton and Valerie Faris and produced by David T. Friendly, Peter Saraf, Marc Turtletaub, Albert Berger and Ron Yerxa. The film received four nominations including Best Picture. Michael Arndt’s Oscar-winning original screenplay deftly blends comedy and drama and is headed by a stellar cast including newcomer Abigail Breslin (who was nominated for her performance), Greg Kinnear, Toni Collette and Alan Arkin, who won Best Supporting Actor for playing the family’s cranky patriarch. Tickets are \$10 for adults, \$7 for seniors and \$5 for students. The Academy Museum is located at 6067 Wilshire Blvd., Los Angeles. academymuseum.org



Photo by Sarah Madison

Beverly Hills members of Westside Ballet of Santa Monica will be featured in “Masters of Movement” on May 31-June 1.

Elevated Senior Living in the Heart of LA: Discover The Watermark at Westwood Village

There's something magical about waking up in Los Angeles, where palm trees sway in the morning sun and every day holds the promise of something new. Tucked just steps from the vibrant cultural scene of Westwood Village lies a senior living community that redefines what it means to thrive in your golden years. Welcome to The Watermark at Westwood Village—where luxury, comfort, and connection come together to create the premier destination for senior living.

Whether you're savoring a chef-crafted meal, enjoying an art class, or simply unwinding in your elegant residence, life here is designed to inspire. The Watermark isn't just a place to live—it's a place to love where you live.

A Modern Sanctuary with Timeless Elegance

The first thing you notice at The Watermark is the architecture: modern and sleek, yet warm and inviting. Inside, the residences feel more like chic city apartments than traditional senior living spaces. Each apartment home is thoughtfully designed, complete with upscale finishes, open floorplans, and abundant natural light. Think designer kitchens, contemporary fixtures, and oversized windows that frame stunning views of the cityscape.

Whether you choose a smartly appointed studio suite or a spacious two-bedroom apartment, you'll find details that reflect a deep understanding of both luxury and functionality. And because peace of mind matters just as much as aesthetics, each residence is equipped with discreet safety features, offering comfort without compromising style.

Culinary Excellence, Every Day

At The Watermark, food is more than just a necessity—it's a celebration. Residents enjoy a culinary experience on par with LA's acclaimed dining scene, thanks to a talented team of in-house chefs who draw on fresh, seasonal ingredients and international inspirations.

Multiple dining venues cater to every mood and palate, because dining here isn't just about nourishment—it's a social, sensory experience that brings residents together in joy and community.

Whole-Person Wellness, Customized to You

Wellness at The Watermark is not one-size-fits-all. Instead, it's an intentional, holistic approach that honors the uniqueness of each resident. Whether you're working with a personal trainer in the fitness center, enjoying a massage in the on-site spa, or participating in a restorative yoga class, every experience is designed to promote physical, mental, and emotional well-being.

The team takes the time to know you—your goals, your health needs, your preferences—and helps tailor a wellness plan that supports your best life. From customized fitness regimens to meditation workshops and even brain health programs, everything you need to stay vibrant is right at your fingertips.



For those needing a bit more support, the Assisted Living and Memory Care neighborhoods offer compassionate, personalized care in a setting that feels both nurturing and empowering. With 24/7 access to trained professionals, families can rest easy knowing their loved ones are in capable, caring hands.

Engage. Explore. Enrich.

What sets The Watermark at Westwood Village apart isn't just what happens inside the walls—it's how seamlessly the community connects residents to the world around them. Located just blocks from UCLA and cultural institutions like the Hammer Museum and Geffen Playhouse, residents have access to an endless array of enrichment opportunities.

But you don't need to leave the campus to stay engaged. Every day, the calendar is brimming with activities designed to ignite curiosity and foster connection. Residents can take a painting class taught by a professional artist, enjoy a classical concert in the salon, or join a book club discussion led by a retired professor.

Signature programs give residents the chance to both learn and teach—sharing their passions, skills, and stories with their neighbors. It's a community that celebrates lifelong learning, where residents aren't just attendees—they're contributors.

Living with Heart and Soul

Perhaps what truly sets The Watermark at Westwood Village apart is its culture—a blend of warmth, energy, and inclusivity that's palpable from the moment you walk in the door. It's in the laughter shared over morning coffee, the friendly check-ins from staff who know your name and favorite dessert, and the spontaneous bursts of piano music drifting from the lounge.

It's the kind of place where everyone belongs. Where a vibrant mix of personalities, backgrounds, and experiences creates a rich tapestry of community. Where residents feel seen, heard, and empowered to live their fullest lives.

Experience the Best of Senior Living in Los Angeles

Choosing where to live is about more than floor plans and amenities—it's about finding a place that feels right. At The Watermark at Westwood Village, residents don't just find a beautiful place to live—they find a vibrant place to be.

Whether you're drawn to the luxurious residences, the exceptional dining, the innovative wellness programs, or the spirit of community that permeates every space, one thing is clear: this is senior living, reimagined.

Come see it for yourself. Schedule a personal tour and discover why The Watermark at Westwood Village is the premier choice for senior living in Los Angeles.

Visit westwoodvillageseniorliving.com or call 310.331.8063 today to schedule a tour and enjoy lunch on us!

SPONSORED CONTENT

Off the Chart Recognizes Nurses with \$10,000 Awards



Photo by Julianna Lozada

2025 Off the Chart award recipients with Co-Founder Victoria Mann Simms and Nurse Economist Shawna Butler

BY JULIANNA LOZADA

Off the Chart, a campaign from the Simms/Mann Institute and Foundation rewarding nursing greatness, celebrated its third recognition event on May 29 at the Museum of Tolerance. Forty nurses from Off the Chart’s partner health systems—Cedars-Sinai Medical Center, City of Hope, UCLA Health, and Keck Medicine of USC—were each awarded \$10,000 for their excellence in the field. Ten nurses were selected from each partnering health system.

The cohort of this year’s Off the Chart award recipients work in a wide variety of

medical branches, from oncology to neonatal care, and occupy various positions including nurse coordinator and nurse practitioner.

Award recipient Laura Alfonso Guerra, an inpatient oncology nurse navigator from UCLA Health, said that receiving the award was “an unexpected honor.”

“To be included amongst so many people that are so passionate and caring about the nursing profession is really such an honor and privilege,” Guerra told the Courier. “It really does inspire you and make you reignited into the nursing profession and the reason why we all started to be nurses in the first place.”

Guerra entered the nursing profession 13 years ago, saying she always liked helping people and nursing just suited her personality. Working in oncology, she noticed the need for patients to receive support as they transition from the hospital to outpatient clinics.

Executive Director of Off the Chart, Rachel Barchie, highlighted additional stories of some of the award recipients, including those who entered the profession through unconventional paths. One nurse left school to become a caregiver, eventually navigating her way through the healthcare system as an immigrant who only spoke Spanish. Another nurse, motivated by his upbringing with his grandparents in Taiwan, entered the field of behavioral health to serve the particular needs of the Chinese American elderly community.

By sharing nurses’ stories and experiences, Off the Chart hopes to “bring increased visibility and attention to nursing expertise,” said Barchie.

The Off the Chart campaign began in the midst of the COVID-19 pandemic, when the global need for nurses was increasingly becoming more urgent despite a declining workforce. This especially concerned Co-Founder of Off the Chart, Victoria Mann Simms, who experienced the extraordinary care of nurses when her father fell ill nearly 30 years ago.

Through recognizing nurses excelling in their field, Off the Chart aims to shine a light on their often under-recognized work in hopes of reversing the declining workforce trend.

Johnese Spisso, President of UCLA Health and a registered nurse herself, spoke with Mann Simms and Nurse Economist Shawna Butler about a 2025 report from the International

Council of Nurses. The report cited a chronic underinvestment in the nursing workforce and thus, investing in nurses would yield a greater return on investment, healthier populations, and a stronger local economy as a result.

Similarly, during the COVID-19 pandemic, Off the Chart’s health system partners faced extraordinary challenges this year, particularly when mammoth wildfires devastated parts of Los Angeles in January.

For example, City of Hope had to relocate their infusion centers due to wildfire smoke but continued to provide infusions to cancer patients. Nurse practitioner and award recipient from Keck Medicine of USC, Jacquelyn Kauilani-Paige, continued to provide support to patients, despite losing her home during the wildfire. UCLA Health’s Lindsay Calac, also an award recipient, worked to devise new plans for patient transfers during emergency situations, such as the wildfires. A fraction of Cedars-Sinai Medical Center’s staff was forced to evacuate or lost their homes.

“It’s been heavy on our minds, and people are still recovering or still homeless,” Cedars-Sinai Chief Nursing Executive, David Marshall, told the Courier. “It makes it a little sweeter this year to have this recognition.”

Despite these challenges, the campaign’s health system partners continued to make their partnership with Off the Chart a priority.

“We’re hoping that people will open their minds and open their thoughts to the importance of nurses,” Mann Simms told the Courier. “We rely on them for lots of stuff and we don’t realize it. They’re very overlooked.”

“Our goal is to move nurses from invisible to invaluable,” said Mann Simms. ●

LET US FOCUS ON HER NEEDS,
SO YOU CAN FOCUS ON BEING
her daughter



The Pinnacles at Burton
SENIOR LIVING

LIMITED TIME MOVE IN SPECIAL! CALL NOW!
310-278-8323
8757 Burton Way, Los Angeles, CA 90048
thepinnaclesatburton.com

Assisted Living Lic# 197602106 Memory Care Lic# 197602370

Four Arrested by BHPD for Burglary on Rodeo Drive



The BHPD made four arrests on May 28 for burglary and other offenses.

BY JESSICA OGILVIE

Four arrests were made in the 400 block of North Rodeo Drive on May 28 at approximately 11:45 a.m., according to Beverly Hills Police Department Sergeant Audra Alatorre.

The suspects included a 45-year-old male arrested for burglary, forgery and use of a false ID; a 39-year-old male arrested for burglary;

a 27-year-old male from Northridge arrested for felony and misdemeanor warrants and possession of burglary tools; and a 35-year-old male from Los Angeles arrested for forgery.

The suspects targeted multiple businesses, and the incidents appear to be related.

No further details were available at press time. ●

Patek Philippe Celebrates New Rodeo Drive Location

On May 22, Thomas J. Blumenthal, President and CEO of Gearys Beverly Hills welcomed invited guests to the the ribbon cutting of the new Patek Philippe Boutique on Rodeo Drive.



Photo courtesy Gearys Beverly Hills

Pictured (from left): Daniel Chen, Executive Vice President of Gearys, Thierry Stern, Owner of Patek Philippe SA, Mayor Sharona Nazarian, Thomas J. Blumenthal and Lisa Jones, President of Patek Philippe USA

Concerts on Canon Summer Season Begins June 5



Photo courtesy city of Beverly Hills

The band Upstream will kick off the Concerts on Canon series June 5.

The city of Beverly Hills' Community Services Department has announced that the 2025 Concerts on Canon summer season will kick off with the popular band, Upstream, on June 5 at 6 p.m. The concerts will take place at Beverly Canon Gardens, located at 241 North Canon Drive. Free outdoor concerts will continue every Thursday through Aug. 25 from 6-8 p.m., with a 15-minute intermission. The season will feature a mixture of classic rock, jazz, bossa nova, disco, country music and more.

The 2025 summer line-up:
June 5: Upstream (Reggae, Steel Drum, Soca, Calypso)
June 12: Country nation (Country)
June 19: Forward Motion Band (Funk, R&B,

Jazz)
June 26: The Funky Warhols (Disco Tribute)
July 3: Smokin' Cobras (Rockin' Oldies)
July 10: As If (90's Tribute)
July 17: No concert
July 24: Joyce Partise (Brazilian bossa nova)
July 31: Neon Nation (80's Tribute)
Aug. 7: Rod Lightning and the Thunderbolts of Love (Classic Rock Tribute)
Aug. 14: Leslie Paul & the Latin Soul Band (Salsa/Latin Jazz)
Aug. 21: The Tokens (Doo-Wop/Pop)
For more information about Concerts on Canon and the bands, visit beverlyhills.org/csevents or call 310-285-1000. ●

4.50%
APY

6-MONTH CD

Grand Opening Special

Visit our new **Beverly Hills** branch at **225 N Beverly Drive** to take advantage of this exclusive offer.

New Money Only | \$500 minimum deposit | Offer available at this location only.

Learn more at valley.com/beverlyhills



Advertised annual percentage yield is accurate as of 05/01/2025. Minimum deposit of \$500 is required to obtain the advertised annual percentage yield, and CD must be opened with a new money deposit. A new money deposit is defined as funds from an external funding source that are not presently on deposit in any other Valley account. CD cannot be opened online and must be opened in the Beverly Hills branch location. If the CD is fully or partially redeemed prior to the maturity date, an early withdrawal penalty may be imposed, which could reduce principal and/or earnings. Offer may be withdrawn or modified without prior notice. Please see the account agreement, product disclosure, and applicable schedule of fees for additional terms and conditions. © 2025 Valley National Bank. Member FDIC. Equal Opportunity Lender. All Rights Reserved. VLY11203

Soprano Golda Zahra Performs at Beverly Canon Gardens



Photo by Selina Kausar

Golda Zahra performing at Beverly Canon Gardens

BY SELINA KAUSAR

The Beverly Canon Gardens was overflowing with spectators on May 24 as opera singer Golda Zahra performed a free concert at 6:30 p.m., the first of a four-part summer series Zahra is hosting across Los Angeles. Backed by a jazz band ensemble, the concert united people across age groups and demographics

as guests enjoyed Broadway hits, vocal jazz favorites, songs and arias including “Quando me’n vo’,” “Mattinata,” “Somewhere Over the Rainbow,” “Memory,” “I Could Have Danced All Night” and “O mio babbino caro.” The balmy evening marked the start of summer in Beverly Hills, as both residents and tourists alike crowded around the gardens to watch the performance. Several audience

members made an evening of the event, bringing chairs, blankets and picnics to the grassy area outside The Maybourne Beverly Hills, with seats filling up quickly. However, this didn’t stop a full turnout, as many more guests joined the crowd, choosing to stand throughout the whole performance. Brief intermissions by a six-piece jazz ensemble featuring two cellists, a saxophonist and a drummer allowed Zahra to rest her vocal cords between songs, with the jazz band performing classic hits such as “Just the Two of Us” and “Isn’t She Wonderful?” A proud Beverly Hills native and Beverly Hills High School alumna, Zahra has been singing professionally since the age of 12 and now pursues opera full time after studying in Italy under legendary soprano Barbara Frittoli. Zahra, who won the 2015 Los Angeles Music Center’s Spotlight Award and was a finalist for the 2022 Rai Radio’s “Voice in Barcaccia” international opera competition, has performed at the Walt Disney Concert Hall, Royce Hall and the Saban Theatre with ensembles including The Hollywood Chamber Orchestra, Burbank Philharmonic, Southeast Symphony, The Dream Orchestra and LA Opera. Heralded as “the rising star of the opera world” and “a promising young opera singer” by the Los Angeles Times, Zahra is renowned

for her impressive vocal range and distinctive voice that captures both the softness and strength of the operatic tones she delivers. At the age of 16, she performed at the Beverly Hills Centennial, and with her Californian roots clearly close to her heart, Zahra returned to the stage in Beverly Hills once again for this event, generously providing the concert free of charge in her hometown. It’s safe to say that Zahra, who is currently studying with celebrity voice teacher Bill Schuman in New York, wowed the audience with her operatic renditions. Speaking to the Courier during the concert, one attendee, Sarah Golding, said, “It’s wonderful to see a young person singing opera. That’s not something you see very often; [Zahra] has a beautiful voice, she’s very talented and it’s great to see so much of the community out to support her today.” Taking a bow after performing, Zahra graciously received several lavish bouquets of flowers from spectators as the concert came to a close with rapturous applause around 7:15 p.m. Her next concert will be held on June 13 at St. Monica’s Church in Santa Monica, where Zahra will be joined by the world-renowned Dream Orchestra conducted by Daniel Suk. ●



Community Services

Concerts ON CAÑON

KICK-OFF ON JUNE 5, 2025 AT 6:00PM WITH UPSTREAM.

SUMMER CONCERTS EVERY THURSDAY | 6:00PM - 8:00PM
BEVERLY CAÑON GARDENS | 241 N. CAÑON DRIVE



beverlyhills.org/csevents

MODERN COMFORT STYLISH LIVING



Experience modern comfort and stylish living **The Watermark at Westwood Village**. With upscale residences, gourmet dining venues, customized care, and unrivaled amenities such as concierge service and an on-site spa and salon, here you'll find a host of opportunities to enjoy an exceptional lifestyle. The Watermark at Westwood Village stands as the premier choice for Active Independent Living, Assisted Living and Memory Care in L.A., offering a lifestyle that blends comfort, sophistication, and a vibrant community atmosphere.

SAVE UP TO \$15k!*



L.A. is known for its culinary talent—and our signature dining venues focus on healthy, flavorful fare with locally sourced ingredients.



Wellness comes in many forms—for the mind, body, and spirit—and we incorporate it into everything we do at The Watermark at Westwood Village.



The Watermark at Westwood Village is set in a historic 14-story building, stylishly renovated, with sweeping views, ample natural light, and elegant shared areas that include a library, lounge, courtyard, welcoming event spaces, and more.

SCHEDULE YOUR TOUR TODAY AND ENJOY LUNCH ON US!

THE WATERMARK
AT WESTWOOD VILLAGE

ÉLAN COLLECTION

310.331.8063

WestwoodVillageSeniorLiving.com
947 Tiverton Ave, Los Angeles, CA 90024

ACTIVE INDEPENDENT LIVING | ASSISTED LIVING | MEMORY CARE



*Valid on select Active Independent Living and Assisted Living new leases signed this month only. Care fees billed separately. ©2025 Discovery Management Group. All Rights Reserved. Prices, plans and programs are subject to change or withdrawal without notice. Void where prohibited by law. Managed by Discovery Management Group. RCFE LICENSE #198320127 WMWV-0063 3/25.



EL RODEO, from page 1

decorate these brand-new walls with butterflies from the Butterfly Project, a bright symbol of transformation. And today, you are the first students to be promoted from this auditorium, standing at the threshold to your next big adventure. Today, we look back not just at what's behind us, but as far as you all have come. Each of you has grown in knowledge and character and confidence, and today, we honor every part of your story, your struggles, your successes, your friendship, and your growth."

The ceremony also included fifth graders singing the school's alma mater, remarks from teachers, and speeches by several students who shared memories and reflected on their journey over the last five years.

"Can you believe we started as sweet, adorable kindergarteners who were scared of the dark, and now we have become the shining light for those who come after us?" Julia Razi said. "In the past years, we've learned a lot. From reading "Green Eggs and Ham" by Dr. Seuss to writing five-paragraph essays about climate change, from adding two plus two to multiplying fractions, from learning to color in between the lines to

sculpting a ceramic butterfly."

"COVID made school weird and hard at times, but it also showed us how strong we are," Theodore Benyamin said. "We learned to adapt, to be flexible, and to keep going even when things didn't go perfectly, like when Zoom froze because the Wi-Fi went out, and it made us look like we were frozen in space. If that wasn't enough change, we also moved from Hawthorne to this new, beautiful campus, El Rodeo."

Students paid homage to their time at Hawthorne, highlighting carnivals, Pajamarama, Halloween parades, and movie nights, as well as the cherished experiences that shaped their time at El Rodeo, which included an overnight field trip in the Santa Monica Mountains, dance parties, and a multicultural day.

As cameras flashed and the 106 students were awarded their certificates, it was clear that this wasn't just a graduation—it was truly a milestone. Moving on to Beverly Vista Middle School, these fifth graders leave behind not only a legacy of resilience but also a foundation for future classes to build upon. ●

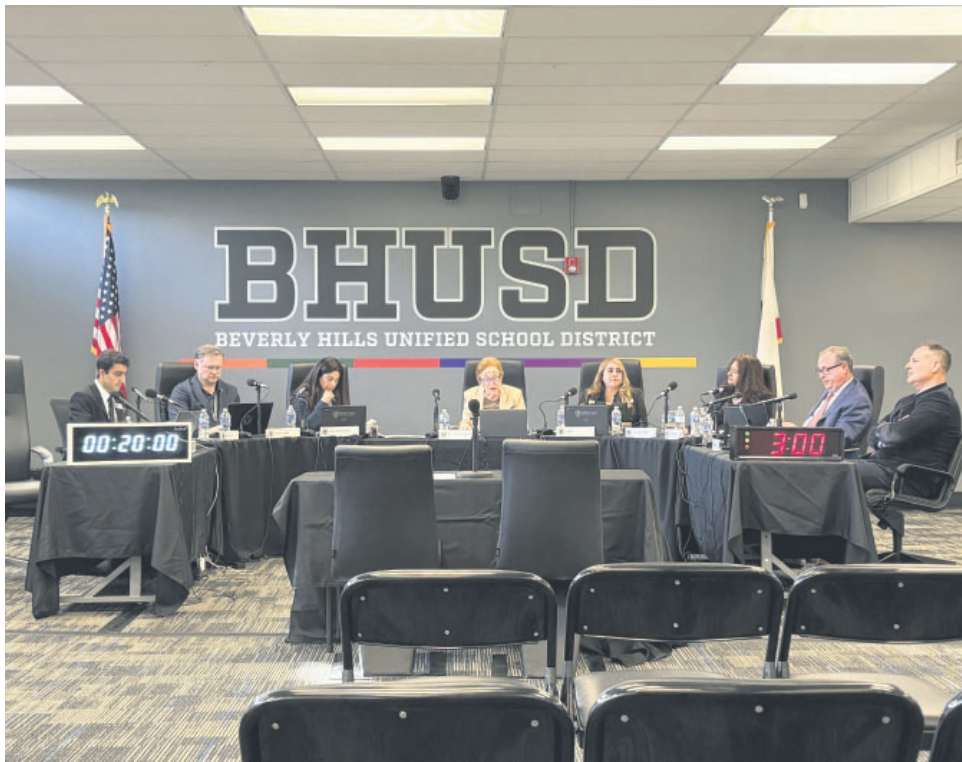


Photo by Jessica Ogilvie

The BHUSD Board met on May 27.

BHUSD, from page 1

"[Our] recommendation is increasing opportunity, access and exposure for our school counseling program, specifically starting at [Beverly Hills High School]," he said, adding, "We are really coming to you and making a recommendation to redesign the way that we have seen our school counseling program functions at the high school."

The counselors focusing on freshmen and sophomores would be responsible for meeting with incoming eighth-grade families, collaborating with teachers and parents, and guiding students through the transition to high school.

"That team, I kind of jokingly called it our hug," Seemann said. "It is the team that is welcoming and transitioning all of our families, not just the students but all of our families, parents, all of our stakeholders, into the high school."

The counselors focusing on juniors and seniors would meet individually with second-semester sophomores, liaise with college admissions representatives and guide students and parents through the college testing and application process.

The board approved the request unanimously.

"When they evaluate you for a Distinguished School or a Blue Ribbon School, and also U.S. News & World Report, one of the metrics is those who not only applied to four-year schools but were accepted and matriculate," said Board Member Dr. Amanda Stern. "So, it definitely is in our best interest to fortify the supports for that."

Seemann also conducted a presentation to inform the board about progress on implementing a Spanish dual language program in the city's elementary schools. The program, which would be called the Dual Language Academy, would be introduced in one kindergarten classroom and one first-grade classroom at both El Rodeo and Horace Mann Elementary Schools in the fall.

The program would follow a one-way immersion structure, meaning the majority of students enrolled would be native English

speakers learning Spanish.

The board approved the initiative with enthusiasm.

"I wholeheartedly support this," said Manouchehri. "I believe this is another game changer for our district."

The district will hold a dual enrollment parent meeting on June 11 to answer questions about the program from the community.

At the board meeting, Board President Rachelle Marcus debuted a new video series called "Mrs. Marcus Meets." In it, Marcus meets with teachers and staff throughout the district to highlight their work.

According to a statement from the district, the series aims to showcase BHUSD's core values of excellence, integrity, wellness, inclusion, safety and community.

The first episode features Marcus in conversation with Beverly Vista Middle School (BVMS) Musical Theatre teacher Dr. Fred Pinto. The two discuss how Pinto knew he wanted to work with kids, the school's recent performance of "The Addams Family" and what he enjoys about working at BVMS.

New episodes will continue to air throughout the year.

In other business, the board approved educational technology tools for the 2025-26 school year, including such products as iReady, BrainPOP and Classtime. The approval followed a discussion in which several board members expressed concern that the district is moving toward more screen time for students rather than less.

"Is there something we can do, because we're really trying to get away from screen time for the K, 1 through 2 and 2 through 3," said Board Member Sigalie Sabag.

Seemann noted that the tools have been carefully vetted by school administrators and staff.

"My answer would be, I'm making the recommendation to purchase [these tools]," he said, later adding, "I can promise you we are not plugging and playing students." ●

www.beverlyhillscourier.com



D LINE SUBWAY EXTENSION PROJECT
Section 1 – Beverly Hills

We're building better transit from DTLA to the Westside.

May Updates

Bus pad installation on N La Cienega Bl requires lane reduction on northbound La Cienega at Wilshire Bl intersection.



213.922.6934
purplelineext@metro.net
metro.net/dline

25-1191PS © 2025 LACMTA

D LINE EXT COBH 1

A Sacred Music Spectacular with Soprano
GOLDA ZAHRA

**THE
ANGELIC
VOICE
CONCERT**

Dream Orchestra with Maestro Daniel Suk
Opera Chorus of Los Angeles

St. Monica Church

JUNE 13



TICKETS

Tickets: AngelicVoice.Com

499 N. Canon Drive
Suite 212
Beverly Hills, CA 90210
310-278-1322
Fax: 310-271-5118
BEVERLYHILLSCOURIER.COM

Publishers

Lisa Friedman Bloch

John Bendheim

Executive Editor

Ana Figueroa

Writers

Bianca Heyward

Selina Kausar

Julianna Lozada

Jessica Ogilvie

Advertising Directors

Rod Pingul

Dina Figueroa

Business Operations Manager

Beverly Weitzman

Production Director

Ferry Simanjuntak

Prod. Manager/Assoc. Editor

Jamison Province



2025 MEMBER

California Newspaper
Publishers Association



Photos and Unsolicited Materials Will Absolutely Not Be Returned. Only unopened, candid photos will be considered for publication. All photos and articles submitted become property of the Courier. No payment for articles or photos will be made in the absence of a written agreement, signed by the Publisher.

Adjudicated as a Newspaper of general circulation as defined in Section 6008 of the Government Code for the City of Beverly Hills, for the Beverly Hills Unified School District, for the County of Los Angeles, for the State of California and for other districts which include the City of Beverly Hills within each such district's respective jurisdiction in proceeding number C110951 in Superior Court, California, on February 26, 1976.

All contents copyright © 2025 BH Courier Acquisition, LLC, all rights reserved. No part of this publication may be copied, transmitted or otherwise reproduced without the prior written consent of BH Courier Acquisition, LLC.
Member: City News Service.

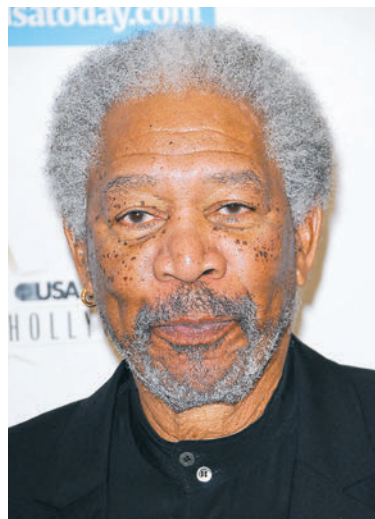
Birthdays



HAPPY BELATED BIRTHDAY
GLORIA JENNINGS MILKOWSKI
May 28



IDINA MENZEL
May 30



MORGAN FREEMAN
June 1



HEIDI KLUM
June 1



MICHAEL BERMAN
June 3



MAXINE PICARD
June 4



MARSHALL PECK
June 5

BEVERLY HILLS *COURIER*

TO HELP SHOWCASE OUR
COMMUNITY AT ITS BEST,
PLEASE SEND A CURRENT
PHOTO EVERY YEAR ALONG
WITH YOUR FULL NAME AND
PHONE NUMBER. ALL PHOTOS
MUST BE HIGH-RESOLUTION,
AT LEAST 300 DPI.

PLEASE SEND THE PHOTOS
WITH AT LEAST TWO
WEEKS NOTICE TO:
EDITORIAL@BHCOURIER.COM



Astrology

BY HOLIDAY MATIS

ARIES (March 21-April 19). Today you're focused on really understanding people -- not just smoothing things over on the surface, but getting to the root of what they need or where they're coming from -- so that better relationships and bigger successes can happen.

TAURUS (April 20-May 20). Flip the script. Try on different ideas just to see how they feel. You're not locked into one path. You've got way more options than you thought, and honestly? It's kind of exciting.

GEMINI (May 21-June 21). You like all kinds of people and are open to whatever they bring. Your warmth makes people feel comfortable to be themselves around you. It's the kind of vibe that can't be forced -- only earned by a spirit as generous as yours.

CANCER (June 22-July 22). The usual way isn't working. It's time to add some novelty. Try something new inside the familiar. You need a fresh challenge, a different angle -- and honestly, just telling someone who

gets it might lift your whole mood.

LEO (July 23-Aug. 22). Misinformation, assumptions and stories based purely on posturing are part of today's egomaniacal collage. In a world full of hype and bad advice, you'll lead with practical intelligence.

VIRGO (Aug. 23-Sept. 22). It's easy to feel rushed when things seem scarce -- like you have to take whatever's there. But kindness steadies you. When you connect with others, you're reminded: Good things aren't running out. You've got time to choose well.

LIBRA (Sept. 23-Oct. 23). Because you pay close attention, the world opens to you in subtle, serendipitous ways. You'll overhear the perfect line, notice the exact sign, feel the next yes in your bones.

SCORPIO (Oct. 24-Nov. 21). Intelligence isn't one single ability measured by IQ, but a variety of capacities -- everyone possesses a unique mix. Until you recognize how someone's intelligence expresses itself, you won't fully see them.

SAGITTARIUS (Nov. 22-Dec. 21). When someone says "trust me" it raises suspicion instead of confidence. If they have to say it, you wonder why they

feel the need to. Today, the same goes for overused words like "authenticity" and "transparency."

CAPRICORN (Dec. 22-Jan. 19). Growing pains are a sign of your inner power. Feeling confined is proof that you've outgrown your current situation. Discomfort is a reflection of your expansion. You don't have to wait for rescue. You'll either be freed or you'll liberate yourself.

AQUARIUS (Jan. 20-Feb. 18). There's plenty of groundwork to lay, and

you're busy with it all day. You don't care whether the work gets noticed, only that it gets done. Still, you'll be spotlighted and celebrated by people who are proud to see you in motion.

PISCES (Feb. 19-March 20). There are so many around who will resonate with you that it would be a waste of energy and an exercise in futility to pursue relationships with those who don't. Shared values and mutual understanding will click in without an ounce of effort.



Meet Paw Casso, the featured adoptable dog of the week. He is a 1-year-old, 14-pound Pomeranian-spaniel mix that was abandoned in the High Desert. If interested in this sweet boy, contact Kim Sill at Shelter of Hope at 310-770-3571.

shelterhopepetshop.org



FATHER'S DAY CAR SHOW

SUNDAY, JUNE 15, 2025 | 10 A.M. - 4 P.M.
RODEO DRIVE | FREE



The Rodeo Drive Concours d'Elegance Car Show will return to Beverly Hills this Father's Day, Sunday, June 15, 2025, from 10 a.m. to 4 p.m.

Free and open to the public!

ROAD CLOSURE:

Rodeo Drive from Wilshire Blvd. to S. Santa Monica Blvd. beginning 9 p.m. Saturday, 6/14 to 11 p.m. Sunday, 6/15.

To learn more, visit [BEVERLYHILLS.ORG/CONCOURS BH](https://beverlyhills.org/concoursbh)



View a selection of local restaurants within walking distance!



POWERED BY
O'GARA

Fun and Games

SUDOKU
05/30/25 ISSUE

								5
5		3				4	1	
	6	1		5			9	
	3	5	2					
7			6		3			1
					9	6	3	
	4			8		1	6	
	9	7				5		2
8								

9	2	7	6	5	1	8	3	4
4	6	1	8	2	3	5	7	9
5	8	3	4	7	9	6	1	2
7	1	6	5	3	4	9	2	8
3	9	4	2	6	8	7	5	1
8	5	2	9	1	7	4	6	3
6	7	9	1	4	2	3	8	5
2	4	5	3	8	6	1	9	7
1	3	8	7	9	5	2	4	6

PUZZLE ANSWERS
05/23/25 ISSUE

A	T	A	R	I	G	A	M	E		I	R	I	S	H		S	W	E	E	T
M	O	T	O	R	P	L	E	X		M	O	T	H	E	R		E	A	R	T
P	R	O	M	I	S	E	M	E		M	U	S	I	C	A		L	N	O	T
S	I	D	E	S		O	R	B	I	T		N	A	K	E	D	S	U	N	
U	N	D	O		C	O	R	T	E	X		E	N	T	I	C	E			
P	O	S		S	O	V	I	E	T		K	L	E	E		T	R	I	M	S
		S	O	L	O	E	D			H	E	E	D		P	O	S	T	I	T
S	T	P	A	U	L	I	S			T	A	N	G		F	A	R		I	D
W	H	I	P	P	E	D		M	A	N	T	A	R	A		S	N	I	P	
I	R	A	I	S	E		H	A	N	K	S		S	N	O	W		A	M	E
S	O	M	E	O	N	E	I	S	G	E	T	T	I	N	G		F	I	R	E
S	W	A	N		A	F	T	E	R		A	L	L		O	F	F	L	A	E
R	A	T	S		P	R	I	O	R	I	T				P	O	L	E	N	T
O	W	E		E	O	N		D	I	N	E		M	E	D	I	A	T	E	D
L	A	R		N	X		W	O	N	G		R	E	D	A	C	T			
L	Y	S	O	L		W	I	N	E		W	E	A	R	I	T		G	U	S
		L	A	P	E	L	S			S	H	A	L	O		M	A	S	H	
T	A	R	A		R	O	A	D		S	M	O	L			G	A	M	M	A
O	R	A	N	G	E	V	O	D	K	A			M	I	S	T	E	R	B	I
M	I	S	D	E	M	E	A	N	O	R			A	M	O	U	N	T	I	N
B	E	H	A	R		S	T	A	R	T			N	E	D	B	E	A	T	T

BEVERLY HILLS *COURIER*

TO ADVERTISE YOUR BUSINESS IN THE BEVERLY HILLS COURIER,
PLEASE CONTACT 310-278-1322
ADVERTISE@BHCOURIER.COM

THE NEW YORK TIMES SUNDAY MAGAZINE CROSSWORD PUZZLE
05/30/25 ISSUE

HALVING THE LAST WORD
BY GARRETT CHALFIN / EDITED BY WILL SHORTZ

Garrett Chalfin is a second-year student at the University of Chicago, studying philosophy and economics. He says he has made many friends in college through crosswords — including, most notably, his girlfriend. “Before the first day of college, she contacted me because she wanted to hear more about my puzzle-making. We’ve been together ever since.” — W.S.

ACROSS

- 1 Verso's counterpart
6 Alternative to an onion
bagel
11 Jai ____
15 Where the Pilgrims
first landed in the
New World
19 Skating gold medalist
Oksana
20 Host
21 Quick look
22 Has a tab open, say
23 Hip-hop's "Puba" and
"Daddy I.U."?
25 Station near Madison
Square Garden, for
short
26 Fleet
27 Hung around
28 Remove from the
Champagne bucket?
30 "Just kidding!"
31 Feeling rash?
34 Hip-hop artist with
the 2019 hit "My
Type"
35 Crisis involving
cartels
39 Goes "Vroom!"
41 Royal title
42 Casting a total brat in
the school play?
45 Some govt. securities
49 ____-tempered
50 "Super cool!"
51 Get ready to take a
shot
53 Ship propeller

- 54 French for “from”
55 Release
57 Dante’s guide in the
“Inferno”
60 Singer Del Rey
61 “The score upon
which reality is
written,” per Henry
Miller
62 Apps might be seen
on one
63 Sediment, e.g.
65 “The co-star of ‘Duck
Soup’ has to be sore
after that!”?
69 Anonymous guy
70 Pauperism, so to
speak
71 Author of the 2020
memoir “Cubed”
72 Lots
73 “Because I’m the
boss!”
75 Pinged online
76 Condition for which
Luvox may be
prescribed, in brief
79 “Wonder Woman”
star
81 Mountain ____
82 Late singer Payne of
One Direction
84 Modern home of
where cuneiform
writing originated
85 Way up or way down
87 “How long have
beavers blocked this
river?”?

- 100 Function in the
role of
102 Monk's title
103 Be crazy about
Chicago trains with
broken A.C.s?
105 Much in quantity
109 Baseball family
name
110 Actor Jared
111 Metric in a
competitive family
business?
114 Prince, e.g.
115 In ____ parentis
116 Blow
117 Designer Hilfiger
118 Lays turf on
119 Little twerp
120 Trunk
121 Head of Slytherin
House in the Harry
Potter books

DOWN

- 1 Subject of the 2018 biopic “On the Basis of Sex,” familiarly
- 2 Noble title
- 3 “Ci vediamo in giro!”
- 4 Getting ready to listen
- 5 Historic district of a city
- 6 Gnarly problem, so to speak
- 7 Architect of Hong Kong’s Bank of China Tower
- 8 Certain hallucinatory experience
- 9 Directed
- 10 Last word of James Joyce’s “Ulysses”
- 11 Dad, in Korean

- 12 Ingredients in some potato soups
13 Son of Aphrodite
14 “You don’t have to tell me”
15 Time for a pick-me-up, humorously
16 Lie ahead
17 Joe of “Home Alone”
18 First name in perfumes
24 Label anew
28 Banks from Los Angeles
29 Maidenhair and others
32 Common dog command
33 Chance
35 Hit up on Instagram, informally
36 Overnight party with light shows and “cuddle puddles”
37 Luau strings
38 Rock group with the 1992 hit “Creep”
40 Harum-_____ (reckless)
43 Untrue
44 Notaro of comedy
46 Drag-and-drop disposal icon
47 Start of a counting rhyme
48 Hit with a smack
52 Time in a Shakespeare title
55 Former Israeli P.M. Olmert
56 Platform for Safari and FaceTime
57 Borderline
58 “Need You Tonight” band, 1987

1	2	3	4	5		6	7	8	9	10		11	12	13	14		15	16	17	18
19						20						21					22			
23					24							25					26			
	27									28						29				
			30				31		32	33			34							
35	36	37				38		39				40		41						
42							43						44		45			46	47	48
49						50						51		52		53				
54					55	56				57	58				59		60			
				61					62					63		64				
	65	66						67					68							
69								70					71							
72					73		74						75					76	77	78
79				80		81					82	83					84			
85					86		87		88	89					90	91				
				92			93		94					95						
96	97	98						99		100				101		102				
103								104				105		106				107	108	
109						110					111	112								113
114						115					116					117				
118						119					120					121				

- 59 Leave alone
61 Arbiters of taste
62 Polite term of address
64 Stamp on an invoice
65 Implied
66 Valerie Harper title
role
67 One of three immortal
elders in "A Wrinkle
in Time"
68 Dickens's ____ Heap
69 Bouts

- 74 Tree whose name sounds like a pronoun
- 76 Word with history or hygiene
- 77 Shut up
- 78 Thru out of a contest, informally
- 80 Philosopher's pursuit
- 82 Exam with an argumentative writing section, in brief
- 83 "You know, I can't quite remember"

- 84 “Oh geez, the answer
was staring me in
the face!”
- 86 Goes through screen
after screen
- 88 “Sadly ...”
- 89 Special attention, for
short
- 90 Made nice
- 91 Wading birds
- 93 Publicly bash
- 96 Doldrums
- 97 Lumberjacks’
competition

- 98 Walk around, maybe
99 Where one might pick
up litter
101 Oozes
104 Burgle
106 About
107 West Point inst.
108 Fanfare
111 Like a diamond in
a ring
112 Queer identity, in
brief
113 12/31



VERTIGOUSA.COM
Available in additional colors





Photo courtesy City of Beverly Hills

Beverly Hills Fire Chief Gregory Burton and Mayor Sharona Nazarian both spoke about the new Cal Fire zoning maps at City Hall on May 28.

WILDFIRE MAPS, from page 1

embers into urban areas. Beverly Hills' new classifications reflect that increased predicting ability.

Mayor Sharona Nazarian opened the May 28 information session, emphasizing in a brief speech that the maps were developed by state officials, not city officials. Nazarian said that because of Beverly Hills' exceptional fire department and emergency response plans, she does not believe that the city should have been subject to a one-size-fits-all mapping process.

"We've tried to be an advocate for our residents," she said. "We've gone to Sacramento; I myself have met with various lawmakers to try to be a voice for our community ... Our fire department is class one, internationally recognized; they have a less than four-minute response time, which is unheard of in any other city. These are things that, unfortunately, the state doesn't recognize, and they've lumped everybody into the same mapping."

Nazarian encouraged residents to reach out to their elected officials to "let them know that this is unacceptable."

Barton reiterated Nazarian's stance, stressing that there is little elected officials in Beverly Hills can do to push back against the new classifications.

"We don't have a lot of say in what we're going to do ... but I think it's important to realize that because of the [City] Council,

because of the community and what we provide to the city and to the community itself, you're very well protected," he said.

Richmond noted that fire officials' goal is not to enforce the code in a punitive manner, but to educate and protect the community.

"It's an opportunity for us as a city to really look at things that we can do in the community to reduce risk," he said.

All properties that are newly located in the VHFHSZ will now require annual brush inspections. Residents who own those properties will receive mailers on how to maintain defensible space and will be visited by fire officials who will help assess "what brush clearance looks like for you," Richmond said.

"If I walk around your home and I find a woodpile against the side of your house, and I'm afraid that an ember's going to land in that and then catch that woodpile on fire, and catch your eaves on fire and your attics on fire, and then we're off to the races," he said, "I'm going to tell you to pull that wood pile away from the home."

Questions were raised by attendees about how the new regulations will affect insurance rates, what to do about neighbors who do not adequately clear brush and whether an increased campaign by residents might influence state lawmakers on this issue. ●

Beverly Hills “Women for Israel” Luncheon Raises Funds for Israel



Photo by Joshua Sudock Photography

From left: Kelly Halligan, Jeannine Nadel, Gilda Baum-Lappe, Frances Bilak and Lynne Wertheimer at the event

Nearly 100 female philanthropists from Beverly Hills and Greater Los Angeles recently attended a luncheon at the Waldorf Astoria Beverly Hills hosted by Jewish National Fund-USA Women for Israel to raise funds to rebuild communities in northern and southern Israel that were impacted on and after the devastating terrorist attacks of Oct. 7. “My parents survived the horrors of the

Holocaust, married as teens, had two children who were both killed, and the camps kept them apart,” said Beverly Hills resident and Women for Israel Chair for Greater Los Angeles Frances Bilak. “We must rebuild and continue to develop communities in the North and the South. Since Oct. 7, our work is more vital than ever in these regions that were hit the hardest.”●

PLANNING COMMISSION, from page 1

The ordinance will now go to City Council for final approval.

The issue of synthetic turf was brought before the commission at a Jan. 30 Study Session. Commissioners at that meeting instructed the city to prepare a draft ordinance.

Synthetic turf was banned in Beverly Hills until 2015, when state lawmakers passed a bill requiring cities to allow the landscaping in response to drought conditions. In 2024, a state senate bill restored authority over the matter to local authorities.

According to the city staff report presented at the May 22 meeting, the current draft ordinance is designed to conserve water, promote sustainability and keep intact the aesthetics of residential areas.

Synthetic turf permit holders who feel they need more time to remove the landscaping will be allowed to request extensions for removal from the City Council.

At the May 22 meeting, commissioners heard comments from several stakeholders both in favor of the ordinance and against.

Myung-Soo Seok, a representative of the Painters and Allied Trades District Council 36, asked the commission to reconsider the ban, noting that it will affect jobs for members of the organization.

"This proposed ban will have a negative impact on the regional market, as well as our members and their ability to work on these types of projects," he said.

Diane Woelke, a board member for Safe Healthy Playing Fields, spoke in favor of the ban, saying that synthetic turf presents health and environmental concerns for communities. She encouraged the commission to implement a full ban on the materials, including in side and backyards.

"Allowing [synthetic turf] in back and side yards does not prevent it from polluting neighboring yards, surface and groundwater, storm drains and the ocean," she said. "It does not prevent microplastics created from synthetic turf from lofting into the air, carrying for miles and re-lofting over and over ... we urge you to institute a complete ban."

If the ordinance is approved by City Council, the Planning Division staff and the Sustainability Team from the Public Works Department will conduct outreach efforts to artificial turf permit holders. Those efforts will include mailed letters and emails, as well as periodic reminders.

City staff recommended that residents affected by the ordinance consider installing alternative landscaping, such as native and water-efficient, non-native plants.

To encourage such changes, staff directed interested parties to the Beverly Hills Garden Handbook, which offers over 125 plant recommendations, four landscaping styles consistent with Beverly Hills architecture and practical tips. ●



www.beverlyhillscourier.com

SCHOOLS

SCHOOL OF ROCK

MUSIC CAMPS

ALL AGES ALL SKILL LEVELS

SCHOOL OF ROCK | Fairfax District - LA
7801 Beverly Blvd, Los Angeles, CA 90036 (323) 999-1919
fairfax@schoolofrock.com
fairfax.schoolofrock.com

WE TEACH

GUITAR KEYS BASS VOCALS DRUMS

DO SOMETHING AWESOME THIS SUMMER.

www.hw.com/summer

PUBLIC NOTICES

TRUSTEE SALE
No. 1249588
Notice of Trustee's Sale
Loan No. Title Order
No. You Are In Default
Under A Deed Of Trust
Dated 06/24/2022.
Unless You Take Action
To Protect Your
Property, It May Be
Sold At A Public Sale.
If You Need An
Explanation Of The
Nature Of The
Proceedings Against
You, You Should
Contact A Lawyer. On
06/17/2025 at 11:00AM,
First American Title
Insurance Company as
the duly appointed
Trustee under and pur-
suant to Deed of Trust
recorded on July 1,
2022 as Document
Number 20220686128
of official records in the
Office of the Recorder
of Los Angeles County,
California, executed by:
8850 Sunset, LLC, as
Tristor, CW Viper
Capital Management,
LLC, as Beneficiary,
Will Sell At Public
Auction To The Highest
Bidder For Cash (pay-
able at time of sale in
lawful money of the
United States, by cash,
a cashier's check drawn
by a state or national
bank, a check drawn by
a state or federal credit
union, or a check drawn
by a state or federal
savings and loan asso-
ciation, savings asso-
ciation, or savings bank
specified in section
5102 of the Financial
Code and authorized to
do business in this
state). At: Behind the
fountain located in Civic
Center Plaza, 400 Civic
Center Plaza, Pomona
CA, all right, title and
interest conveyed to
and now held by it
under said Deed of
Trust in the property sit-
uated in said County,
California describing
the real property there-
in: See Exhibit "A"
attached hereto and
incorporated by refer-
ence herein for real
property The property
heretofore described is
being sold "as is". The
street address and
other common designa-
tion, if any, of the real
property described

above is purported to
be: 8850-8878 West
Sunset Blvd. and, 1029
Larrabee Street, West
Hollywood, CA 90069.
The undersigned
Trustee disclaims any
liability for any incor-
rectness of the street
address and other com-
mon designation, if any,
shown herein. Said
sale will be made, but
without covenant or
warranty, expressed or
implied, regarding title,
possession, or encum-
brances, to pay the
remaining principal sum
of the note(s) secured
by said Deed of Trust,
with interest thereon, as
provided in said note(s),
advances, if any, under
the terms of the Deed of
Trust, estimated fees,
charges and expenses
of the Trustee and of
the trusts created by
said Deed of Trust,
with interest thereon, as
provided in said note(s),
advances, if any, will
increase this figure prior
to sale. The beneficiary
under said Deed of
Trust heretofore exe-
cuted and delivered to
the undersigned a writ-
ten Declaration of
Default and Demand for
Sale, and a written
Notice of Default and
Election to Sell. The
undersigned caused
said Notice of Default
and Election to Sell to
be recorded in the
county where the real
property is located and
more than three months
have elapsed since such
recording. Notice To
Potential Bidders: If you
are considering bidding
on this property lien,
you should understand
that there are risks in-
volved in bidding at a
trustee auction. You
will be bidding on a
lien, not on the prop-
erty itself. Placing the
highest bid at a trustee
auction does not auto-
matically entitle you to
free and clear owner-
ship of the property.
You should also be
aware that the lien
being auctioned off
may be a junior lien.
If you are the highest
bidder at the auction,
you are or may be respon-

ble for paying off all
liens senior to the lien
being auctioned off,
before you can receive
clear title to the prop-
erty. You are encourag-
ed to investigate the ex-
istence, priority, and size
of outstanding liens that
may exist on this prop-
erty by contacting the
county recorder's office
or a title insurance com-
pany, either of which
may charge you a fee
for this information. If
you consult either of
these resources, you
should be aware that
the same lender may
hold more than one
mortgage or deed of
trust on the property.
Notice To Property
Owner: The sale date
shown on this notice of
sale may be postponed
one or more times by
the mortgagee, benefi-
ciary, trustee, or a
court, pursuant to
Section 2924g of the
California Civil Code.
The law requires that
information about trust-
ee sale postponements
be made available to
you and to the public,
as a courtesy to those
not present at the sale.
If you wish to learn
whether your sale date
has been postponed,
and, if applicable, the
rescheduled time and
date for the sale of this
property, you may visit
the website below using
the file number
assigned to this case.
Information about post-
ponements that are
very short in duration or
that occur close in time
to the scheduled sale
may not immediately be
reflected on the Internet
Web site. The best way
to verify postponement
information is to attend
the scheduled sale.
Notice To Tenant: You
may have a right to pur-
chase this property
after the trustee auction
pursuant to Section
2924m of the California
Civil Code. If you are an
"eligible tenant buyer,"
you can purchase the
property if you match
the last and highest bid
placed at the trustee
auction. If you are an
"eligible bidder," you
may be able to pur-
chase the property if
you exceed the last and
highest bid placed at
the trustee auction.
There are three steps
to exercising this right
of purchase. First, 48
hours after the date of
the trustee sale, you
can call (858) 410-
2154, or visit this in-
ternet website [See Link
Below], using the file
number assigned to
this case [TS 1249588]
to find the date on
which the trustee's sale
was held, the amount of
the last and highest bid,
and the address of the
trustee. Second, you
must send a written
notice of intent to place
a bid so that the trustee
receives it no more
than 15 days after the
trustee's sale. Third,
you must submit a bid
so that the trustee
receives it no more
than 45 days after the
trustee's sale. If you
think you may qualify
as an "eligible tenant
buyer" or "eligible bid-
der," you should con-
sider contacting an
attorney or appropriate
real estate professional
immediately for advice
regarding this potential
right to purchase. For
information on sale
dates please visit our
website at: <https://foreclosure.firmap.com/#/foreclosure> Date:
5/15/25 First American
Title Insurance
Company 9255 Town
Center Drive Suite 200
San Diego, CA 92121
(858) 410-2158 David
Z. Bark, Foreclosure
Trustee Exhibit "A"
Parcel 1: Lot 1, Of Tract
No. 318, In The City Of
West Hollywood,
County Of Los Angeles,
State Of California, As
Per Map Recorded In
Book 15, Page 33, Of
Maps, In The Office Of
The County Recorder
Of Said County. Parcel
2: The Easterly 60
Feet, Front And Rear,
Of Lot 2 Of Tract No.
318, In The City Of
West Hollywood,
County Of Los Angeles,
State Of California, As
Per Map Recorded In
Book 15 Page 33 Of
Maps, In The Office Of
The County Recorder
Of Said County. Parcel
3: Lot 2, Except The
Easterly 60 Feet
Thereof, Of Tract No.
318, In The City Of
West Hollywood,
County Of Los Angeles,
State Of California, As
Per Map Recorded In
Book 15 Page 33 Of
Maps, In The Office Of
The County Recorder
Of Los Angeles County.
Except Therefrom That
Portion Of Said Land
Lying Within San
Vicente Boulevard, As
Described In That
Certain Final Order Of
Condemnation, As
Parcel 5-1, Recorded
August 10, 1967 As
Instrument No. 3447,
Official Records. Parcel
4: Lot 5, Except The
Easterly 60 Feet
Thereof Of Laramond
Addition To Sherman In
The City Of West
Hollywood, County Of
Los Angeles, State Of
California, As Per Map
Recorded In Book 2
Page 51 Of Maps, In
The Office Of The
County Recorder Of
Los Angeles County.
Except Therefrom That
Portion Of Said Land
Lying Within San
Vicente Boulevard, As
Described In That
Certain Final Order Of
Condemnation, As
Parcel 5-1, Recorded
August 10, 1967 As
Instrument No. 3447,
Official Records. Parcel
5: The Easterly 60
Feet, Front And Rear,
Of Lot 5 Of The
Laramond Addition To
Sherman, In The City
Of West Hollywood,
County Of Los Angeles,
State Of California, As
Per Map Recorded In
Book 2 Page 51 Of
Maps, In The Office Of
The County Recorder
Of Said County. Parcel
6: Lots 6 And 7,
Laramond Addition To
Sherman Tract, In The
City Of West Hollywood,
County Of Los Angeles,
State Of California, As
Per Map Recorded In
Book 2 Page 51 Of
Maps, In The Office Of
The County Recorder
Of Said County. Parcel
7: Lot 8 Of The
Laramond Addition To
Sherman In The City Of
West Hollywood,
County Of Los Angeles,
State Of California, As
Per Map Recorded In
Book 2 Page 51 Of
Maps, In The Office Of
The County Recorder
Of Los Angeles County.
Except Therefrom That
Portion Of Said Land
Lying Within San
Vicente Boulevard, As
Described In That
Certain Final Order Of
Condemnation, As
Parcel 5-2, Recorded
August 10, 1967 As
Instrument No. 3447,
Official Records.
BHC Published
05/23/25,
05/30/25, 06/06/25

Meditation in Motion

TAI CHI

BAGUA | QIGONG | MUDWALKING

Roxbury Park | 471 S. Roxbury Drive

Tai Chi Classes Start June 3rd

TAI CHI & QIGONG [18+]
Tu | 6/3 - 7/1
11:15am - 12:45pm
\$148 (R) / \$185 (NR)
Class Code: 12156
Min. Participants: 11

TAI CHI & QIGONG [18+]
Th | 6/5-7/3 (No class 6/19)
11:15am - 12:45pm
\$118 (R) / \$148 (NR)
Class Code: 12157
Min. Participants: 11

TAI CHI & QIGONG [18+]
Sa | 6/7-7/5
9:15am-10:45am
\$148 (R) / \$185 (NR)
Class Code: 12158
Min. Participants: 11

ABOUT THE INSTRUCTOR

Samuel Barnes, director of Tai Chi Works Studio and the Qigong Healing Institute in Beverly Hills, has over 42 years of experience teaching Tai Chi and other Eastern health practices. He has taught at UCLA, traveled in China and Tibet, and lectures internationally with the National Qigong Association and the World Congress on Qigong, Tai Chi, and Traditional Chinese Medicine.

(310) 285-1000
beverlyhills.org/bhrec

Tai Chi Classes Start June 3rd

Beverly Hills Community Life

Summer 2025

MAY 30, 2025

BEVERLY HILLS *COURIER*

PAGE 15

Public Notices



COUNTY OF LOS ANGELES
TREASURER AND
TAX COLLECTOR

NOTICE OF DIVIDED PUBLICATION

Made pursuant to Revenue and
Taxation Code Section 3381

Pursuant to Revenue and Taxation Code (R&TC) Sections 3381 through 3385, the Notice of Power to Sell Tax-Defaulted Property Subject to the Tax Collector's power to sell in and for the County of Los Angeles, State of California, has been divided and distributed to various newspapers of general circulation published in the County. A portion of the list appears in each of such newspapers.

NOTICE OF IMPENDING POWER TO
SELL TAX-DEFAULTED PROPERTY

Made pursuant to Revenue and Taxation
Code Section 3361

Notice is hereby given that the following parcels listed will become subject to the Tax Collector's power to sell on Tuesday, July 1, 2025, at 12:01 a.m. Pacific Time, by operation of law. The real property taxes and assessments on the parcels listed will have been defaulted five or more years, except for:

1. Nonresidential commercial parcels, as defined in R&TC Section 3691, which will have been defaulted for three or more years,

2. Parcels on which a nuisance abatement lien has been recorded, which will have been defaulted for three or more years.

The Tax Collector will record a Notice of Power to Sell unless the property taxes are paid in full or the property owner initiates an installment plan of redemption, as provided by law, prior to 5:00 p.m. Pacific Time, on Monday, June 30, 2025, when the right to initiate an installment plan terminates. Thereafter, the only option to prevent the sale of the property at public auction is to pay the taxes in full.

The right of redemption survives the property becoming subject to the Tax Collector's power to sell, but it terminates at 5:00 p.m. Pacific Time, on the last business day before the scheduled auction of the property by the Tax Collector.

The Tax Collector will furnish, upon request, information concerning making a payment in full or initiating an installment plan of redemption. Requests must be made at 225 North Hill Street, First Floor Lobby, Los Angeles, California 90012. For more information, please visit the website at tfc.lacounty.gov or (213) 974-2111.

The amount to redeem the property, in United States dollars and cents, is set forth in the listing opposite each parcel number. This amount includes all defaulted taxes, penalties, and fees that have accrued from the date of tax -default to the date of Monday, June 30, 2025.

I certify, under penalty of perjury, that the foregoing is true and correct. Dated this 25th day of April, 2025.



ELIZABETH BUENROSTRO GINSBERG
TREASURER AND TAX COLLECTOR
COUNTY OF LOS ANGELES
STATE OF CALIFORNIA

PARCEL NUMBERING SYSTEM
EXPLANATION

The Assessor's Identification Number, when used to describe property in this list, refers to the Assessor's map book, the map page, the block on the map, if applicable, and the individual parcel on the map page or in the block. The Assessor's maps and further explanation of the parcel numbering system are available in the Assessor's Office, 500 West Temple Street, Room 225, Los Angeles, California 90012.

The real property that is the subject of this notice is situated in the County of Los Angeles, State of California, and is described as follows:

PROPERTY TAX DEFAULTED IN YEAR 2022 FOR TAXES, ASSESSMENT, AND OTHER CHARGES FOR FISCAL YEAR 2021-2022

139 \$8,197.48

KITE, COURTNEY D AIN: 2272-028-014

140 \$5,445.23

KOSTINA, EKATERINA TR EKATERINA KOSTINA TRUST AIN: 2274-019-028

141 \$1,481.41

JALALI, YOUSEF AND CHARISSA TRS Y AND C JALALI TRUST AIN: 2274-020-022

142 \$19,760.73

JALALI, YOUSEF AND CHARISSA TRS Y AND C JALALI TRUST AIN: 2274-020-024

201 \$139.54

WICKS, ROGER A AND EVA AIN: 2384-009-052

202 \$63.98

HILLA GROUP LLC C/O C/O DENNIS HAWK AIN: 2384-021-058

203 \$139.27

SMITH, GEORGIANN AIN: 2386-014-023

1759 \$60,421.74

1471 SUMMITRIDGE LLC AIN: 4355-005-001

1772 \$499.24

BURNS, MARVIN G CO TR HAROLD EDELSTEIN DECD TRUST AIN: 4371-005-023

1773 \$15,230.20

BSD INVESTORS TEAM LLC AIN: 4371-016-006

1774 \$2,125.55

FIXEL, LOREN ET AL WISNEFSKY, YEHUDIS AIN: 4371-018-003

1775 \$553.84

MARIE, FARRAH F AIN: 4371-024-003

1776 \$5,541.28

CFC 27 LIMITED AIN: 4371-024-007

1777 \$485.28

CFC 27 LIMITED AIN: 4371-024-008

1778 \$2,175.45

YAZAM 2 LLC C/O C/O JANIRE LAMQUIZ AIN: 4371-026-035

1779 \$688.79

SMITH, MARELL L AIN: 4371-027-012

1780 \$382.65

SMITH, DONNA AIN: 4371-030-032

1781 \$128.29

GLATT, PHYLLIS E DECD EST OF C/O C/O JOHN H GLATT AIN: 4371-031-003

1782 \$367.55

FARHAD, YAGHABI AIN: 4371-032-014

1783 \$683.00

SMITH, MARELL L AIN: 4371-032-019

1784 \$658.02

BASSETT, ROBERT D DECD EST OF C/O C/O RICHARD D BASSETT, ADM AIN: 4371-032-032

1785 \$1,634.64

PERKINS, MEMI C AIN: 4371-035-004

1786 \$1,076.28

SMITH, MARRELL AIN: 4371-036-012

1787 \$1,490.04

LINCOLN, KARA J ET AL YUDIS, MAURICE AIN: 4371-036-018

1788 \$1,490.04

LINCOLN, KARA J ET AL YUDIS, MAURICE AIN: 4371-036-019

1789 \$128.08

GLATT, PHYLLIS E DECD EST OF C/O C/O JOHN H GLATT AIN: 4371-038-012

1790 \$326.33

BSD INVESTORS TEAM LLC AIN: 4371-041-014

1791 \$326.33

BSD INVESTORS TEAM LLC AIN: 4371-041-015

1792 \$326.33

BSD INVESTORS TEAM LLC AIN: 4371-041-016

1793 \$579.73

BSD INVESTORS TEAM LLC AIN: 4371-041-017

1794 \$326.33

BSD INVESTORS TEAM LLC AIN: 4371-041-020

1795 \$1,111.57

BSD INVESTORS TEAM LLC AIN: 4371-042-023

1796 \$5,779.48

BSD INVESTORS TEAM LLC AIN: 4371-044-015

1797 \$36,530.24

BSD INVESTORS TEAM LLC AIN: 4371-044-024

1798 \$1,038.68

SMITH, MARRELL AIN: 4371-046-020

1805 \$446.98

MACMASTER ELECTRICAL AND MARINE INC AIN: 4380-003-016

1806 \$193.25

ELLIS, PHILLIP R AIN: 4380-024-008

1807 \$1,362.78

DEMOGENES, TOM AIN: 4380-031-006

1808 \$2,198.29

15211 FRIENDS STREET INC AIN: 4380-033-004

1810 \$1,269.50

RAIGOZA, DAMIANO O AND IRENE AIN: 4383-017-015

1811 \$529.78

AMIN, YASHAAR AND SMIN, LESLIE A AIN: 4383-019-021

PROPERTY TAX DEFAULTED IN YEAR 2020 FOR TAXES, ASSESSMENT, AND OTHER CHARGES FOR FISCAL YEAR 2019-2020

1731 \$89,317.07

LIN, HSIN YI AND CHANG, KUEI HUEI SITUS:10390 W LA GRANGE AVE 301 LOS ANGELES CA 90025-5121 AIN: 4319-008-107

1732 \$232,722.80

NEAMA, HAMAD AL SITUS:1 CENTURY DR NO 31D LOS ANGELES CA 90067 AIN: 4319-017-135

1746 \$65,476.59

CALLARI, TOGAWA SITUS:415 S WILLAMAN DR 101 LOS ANGELES CA 90048-6705 AIN: 4334-015-095

1747 \$263,768.89

CONWAY, SHERRI A TR BOULDIN TRUST SITUS:116 N GALE DR BEVERLY HILLS CA 90211-2331 AIN: 4334-022-079

1748 \$15,145.81

ALGHALAYINI, WAFAA TR WAFAA ALGHALAYINI TRUST SITUS:100 S DOHENY DR NO 506 LOS ANGELES CA 90048-2989 AIN: 4335-008-104

1749 \$36,592.00

PAN, YUXIAO SITUS:141 S CLARK DR 229 LOS ANGELES CA 90048-3243 AIN: 4335-012-101

1750 \$69,278.63

LAPEER BH LLC SITUS:215 N LA PEER DR BEVERLY HILLS CA 90211-1642 AIN: 4335-022-009

1751 \$474.64

BYER, VICTOR Y AND ALEXANDRA TRS BYER FAMILY TRUST SITUS:116 N SWALL DR NO 501 BEVERLY HILLS CA 90211-1927 AIN: 4335-029-131

1752 \$28,823.36

GALISKY, ANTOINETTE L SITUS:874 HAMMOND ST NO 11 WEST HOLLYWOOD CA 90069-4866 AIN: 4340-021-089

1753 \$36,702.64

ASHHURST, JAMES H IV SITUS:999 N DOHENY DR NO 309 WEST HOLLYWOOD CA 90069-3148 AIN: 4340-027-052

1754 \$98,601.75

CHOU, JIANYING AND ZHOU, ZHI ZHUANG AND ZHOU, YI SITUS:425 N MAPLE DR NO 305 BEVERLY HILLS CA 90210-5901 AIN: 4342-015-013

1756 \$514,663.05

NOVAL, VICTOR F TR REXFORD TRUST SITUS:1124 MARILYN DR BEVERLY HILLS CA 90210-2228 AIN: 4348-003-014

1757 \$1,201,160.08

1141 SUMMIT DRIVE LLC SITUS:1141 SUMMIT DR BEVERLY HILLS CA 90210-2252 AIN: 4348-013-030

1758 \$23,753.22

DURON, SALVADORE A SITUS:1712 ANGELO DR BEVERLY HILLS CA 90210-2722 AIN: 4348-022-012

1760 \$3,670.66

LANE FAMILY PROPERTIES LLC C/O C/O DALE ROBINSON AIN: 4355-017-027

1761 \$4,598.67

LANE FAMILY PROPERTIES LLC C/O C/O DALE ROBINSON AIN: 4355-017-036

1809 \$108,692.34

LI, SICHENG AND ZHAO, JIANYING SITUS:1941 BENEDICT CANYON DR LOS ANGELES CA 90210-1401 AIN: 4383-015-023

1813 \$165,437.07

DE PASSE, SUZANNE SITUS:9701 OAK PASS RD LOS ANGELES CA 90210-1222 AIN: 4384-007-017

1814 \$245,576.20

VELLA, ZACHARY SITUS:9703 HENSAL RD LOS ANGELES CA 90210-1209 AIN: 4384-023-013

1815 \$61,603.13

2761 HUTTON DRIVE LLC C/O C/O MARK KLOT SITUS:2761 HUTTON DR LOS ANGELES CA 90210-1215 AIN: 4385-008-005

1816 \$457,633.92

RUDMAN, BRUCE D TR 9617 ARROWOOD DRIVE TRUST C/O C/O MOHAMED HADID SITUS:9617 ARROWOOD DR LOS ANGELES CA 90210-1725 AIN: 4387-022-017

1817 \$6,068.63

1800 LOMA VISTA PARTNERSHIP SITUS:1800 LOMA VISTA DR BEVERLY HILLS CA 90210-1929 AIN: 4391-013-024

2406 \$865,953.12

1 BODE DRIVE LLC TRUST NUMBER BRIDGE LOAN FINANCISITUS:1622 VIEWMONT DR LOS ANGELES CA 90069-1319 AIN: 5558-017-060

2407 \$157,115.41

GREENVILLE INVESTMENTS LLC SITUS:8692 FRANKLIN AVE LOS ANGELES CA 90069-1408 AIN: 5558-019-011

2408 \$2,816.31

DZIENCIO, DARREN SITUS:8787 SHOREHAM DR NO 501 WEST HOLLYWOOD CA 90069-2285 AIN: 5559-006-058

2409 \$57,399.92

BOCCHIERI, BRETON A SITUS:1440 SUNSET PLAZA DR LOS ANGELES CA 90069-1342 AIN: 5559-011-010

PROPERTY TAX DEFAULTED IN YEAR 2019 FOR TAXES, ASSESSMENT, AND OTHER CHARGES FOR FISCAL YEAR 2018-2019

1755 \$203,002.03

PINCKNEY, CATHERINE L DECD EST OF C/O C/O PATRICIA STEPHENSON, EXECSITUS:208 N MAPLE DR BEVERLY HILLS CA 90210-4902 AIN: 4342-025-005

PROPERTY TAX DEFAULTED IN YEAR 2018 FOR TAXES, ASSESSMENT, AND OTHER CHARGES FOR FISCAL YEAR 2017-2018

1812 \$316,454.74

LEVIN, JOHN TR JOHN LEVIN TRUST SITUS:9669 OAK PASS RD LOS ANGELES CA 90210-1231 AIN: 4384-007-014

CN117297 512 May 30, Jun 6, 2025

FICTITIOUS BUSINESS NAME STATEMENT 2025088561 The following is/are doing business as: **OBELO 169 N. La Peer Dr. Beverly Hills, CA 90211;** Oksana Beloborodko 169 La Peer Dr. Apt 103 Beverly Hills, CA 90211; The business is conducted by: AN INDIVIDUAL registrant(s) has HAS begun to transact business under the name(s) listed on April 2025: **Oksana Beloborodko, Owner** Statement is filed with the County of Los Angeles: May 1, 2025; Published: May 9, 16, 23, 30, 2025 LACC N/C

STATEMENT OF ABANDONMENT OF USE OF FICTITIOUS BUSINESS NAME **2025096401** The following Name of Business(es) as: **SKIN WITCH LA, THE SKIN WITCH 499 N. Canon Dr. #407, Beverly Hills, CA 90210;** EMMA GOODMAN 499 N. Canon Dr. #407, Beverly Hills CA 90210; The business was conducted by: AN INDIVIDUAL registrant(s) has begun to transact business under the name(s) listed on MAY 6, 2021: **Emma Goodman, Owner** Statement is filed with the County of Los Angeles: May 12, 2025; Published: May 16, 23, 30, June 6, 2025 LACC N/C

FICTITIOUS BUSINESS NAME STATEMENT **2025102930** The following is/are doing business as: **CRIME EXPOSE WITH NANCY O'DELL, 233 S. BEVERLY DRIVE, 2ND FLOOR BEVERLY HILLS, CA 90212;** TORNATE TRINO LLC, 233 S. BEVERLY DRIVE, 2ND FLOOR BEVERLY HILLS, CA 90212; The business is conducted by: A LIMITED LIABILITY COMPANY registrant(s) has HAS begun to transact business under the name(s) listed on March 2025: **Tornate Trino LLC, David Shall, Manager.** Statement is filed with the County of Los Angeles: May 20, 2025; Published: May 30, June 6, 13, 20, 2025 LACC N/C

WE PUBLISH DBA's, SUMMONS
NAME CHANGE,
BIDS, NOTICE TRUSTEE's
AND OBITUARIES

FOR MORE INFO
CALL US AT 310-278-1322

COURIER
CLASSIFIEDS



Santa Barbara
ESTATE MANAGEMENT

With over four decades of trusted experience, I provide discreet, bespoke services for high-net-worth individuals, specializing in the protection and oversight of luxury residences for absentee homeowners. I operate with integrity, professionalism, and absolute discretion, prioritizing client confidentiality while delivering customized solutions that reflect each client's unique needs and lifestyle.

805-319-5364
santabarbaraestatemangement@gmail.com
Licensed & Insured
www.santabarbaraestate.management



ELITE CLASSY MUSIC
FOR YOUR CELEBRATIONS!

by "Maestro John Andrade"
Composer, Singer, Guitarist of
Neo-Opera, Jazz, Romantic, Blues,
Funk, Spanish Guitar,
Soul and Latin Music.



Scan this QR
code to listen
to my music



then call (818)725-6067 For Booking!
email: **john6andcindy7@gmail.com**

O8
LEGAL SERVICES

LEGAL PROBLEMS?
TOP "A/V" RATED BEVERLY HILLS
LAW FIRM CAN HELP YOU.
Specializing in: Divorce, Collection of
Delinquent Support & Personal Injury Auto &
Motorcycle Accident Cases, Civil, Real Estate,
Family Law & Auto Accidents

**No Recovery, No Fee!
Free Consultation.**
**LAW OFFICES OF
BRADFORD L. TREUSCH**
• 310/557-2599 •
"A/V" RATED FOR
OVER 35 YEARS.
www.Treusch.net



SUPER LAWYER
• **Bradford L. Treusch** •
SuperLawyers.com

PERSONAL INJURY & ACCIDENT

Law Offices of
Jeffrey A. Shane

For Winning Settlements and Verdicts



310 820 3644
js@jeffreyschane.com
Beverly Hills/ Brentwood
www.jeffreyschane.com

PAGE 16

BEVERLY HILLS *COURIER*

MAY 30, 2025

Classifieds

ANNOUNCEMENT



JENNY OF ALL TRADES
The Los Angeles professional organizer everyone needs in their lives.
Jennydun18@gmail.com, 310 989-3697.
Instagram @jennyddesign





48
FITNESS

CERTIFIED FITNESS & PILATES TRAINER

Private sessions in your home or in-studio
Stay strong, stay independent

Call Natalie (424)-465-3370 for scheduling & rates

88
ELDERLY CARE



“CARE YOU CAN COUNT ON”
(Formerly Executive Home Care, Inc.)
OVER 24 YEARS OF SERVICE

AFFORDABLE HOMECARE

• Caregivers • CNA • Companions •
• Live-In / Live-Out •
Experienced • Background Checked

310.859.1555
richard@executivereferallcare.com

BBB A+ Rated Insured Executive Referral Care is a referral agency.

88
ELDERLY CARE

ARE YOU A SENIOR AND NEED ASSISTANCE?
We can help YOU!

WE PROVIDE EXPERIENCED Caregivers, CNA's & HHA's for seniors needing companions to drive them to doctors, prepare meals, light housekeeping, etc...

LICENSED • BONDED • INSURED •

CALL LISA 24HRS.
323/877-8121
323/806-3046

COURIER CLASSIFIEDS

58
DRIVING SERVICES

PRIVATE CHAUFFEUR *** AVI ***

20 yrs experience
Own limo
or client car.
Call or text 323-353-5000

65
DOMESTIC SERVICES

***** EXPERIENCED HOUSEKEEPER *****

NEEDS TO FILL THURSDAY!
PET FREINDLY
CALL 310/429-9375

88
ELDERLY CARE

DEPENDABLE CARE INC. IN-HOME CARE

Caregivers / Homemakers
Licensed / Insured
Serving LA County Since 1992

Teri Lieberman, Administrator
818-489-3208 • Terileb@gmail.com

Amazing CAREGIVER Service

We understand your needs, please let us know how we can help you.
Grace (310) 963-8374

MySafe

IT'S NOT JUST JEWELLERY, IT'S A LEGACY!



MySafe 21st Century Safe Deposit Box

Advanced Safe Robotics, Multi Layered Access Control, \$100,000 Insurance cover FREE of Charge .
www.mysafe.-USA.com
+1 725 329 2601 : +1 725 329 2598
terry@mysafeglobal.com

Energetic Companion/ Caregiver Available

Personal Care Assistance

Companionship, meal prep, med's reminder, own car/ins. for Doctors appointments, errands, and shopping.

Emma C.N.A/C.H.H.A
323/561-6257

Located in the heart of Beverly Hills

Request Marc's Concept USEM "Use Someone Else's Money" Leveraged Opportunities. Please send your email address to marcmaratsky@att.net and write in the subject line BH Courier USEM Concept. I can be reached at (310) 275-4069 with any questions.

MarcMaratsky Personal Insurance Services "Helping my clients with a personal touch since 1980"

Planning Puts You In Control of Your Future! Ages 30+ Long-term care insured solutions require medical underwriting approval to USEM "Use Someone Else's Money" to pay for all levels of care.

Don't Let Long-Term Care Costs Turn You Upside Down!

LICENSED INSURED • BONDED

Senior Home Care Agency

Celeste Angel Care

Call 747/279-7289

TO ADVERTISE YOUR SERVICES IN THE COURIER CALL US AT 310 278 1322

Classifieds

90
EMPLOYMENT OPPORTUNITY

Assistant Hebrew & Judaic Studies Teacher: Assist in teaching early childhood students aged 3-4 Judaic Studies using Hebrew language, Torah (Bible) stories, Jewish holidays, customs & traditions in accordance w/ school curriculum. Jobsite: Beverly Hills, CA. Min. H.S. Diploma or foreign equiv., + 2 yrs. exp. as Hebrew & Judaic Studies Teacher Assistant, or Assistant Hebrew & Judaic Studies Teacher plus exp. in teaching Hebrew language to kindergarten and/or elementary students req'd. Salary: \$54,350/yr. Fax CV to Hillel Hebrew Academy, attn.: E. Sender @ (310) 276-6134

240
OFFICE/STORE
FOR LEASE

**PRIME
BEVERLY HILLS
Boutique Bldg.**
**Adjacent to
The Maybourne
on Canon Dr.**

Large Office Avail.
11ft.x18ft. • \$1,700

With reception, library
and kitchen access.
• **310/273-0136** •
**Close to shops
and restaurants.**

240
OFFICE/STORE
FOR LEASE

**SPACE FOR
SUBLEASE**
**Golden Triangle
Beverly Hills**
Ideal for retail
and hair styling
Call: 310/490-8267

**EXECUTIVE OFFICE
BEVERLY HILLS
TRIANGLE**
HIGH IMAGE BLDG
OFFERS 150 SQ.FT.
EXEC OFFICE
\$1,750/MO.
**CALL KAREN
(310) 339-8749**

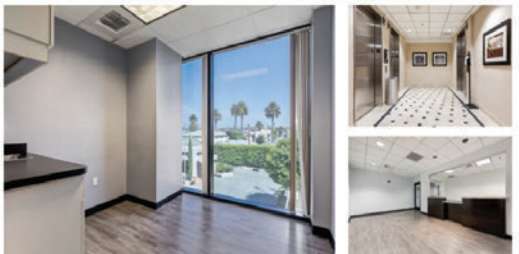
**250 N. ROBERTSON BLVD., SUITE 411
BEVERLY HILLS**



Spacious suite located on the 4th floor overlooking Robertson Blvd. with reception/waiting area, 3 exam rooms with large open space for physical therapy. Private office with secondary exit.

FOR MORE INFO CALL 310-276-2024

99 N. LA CIENEGA BLVD. BEVERLY HILLS



Suite 304 is fully built-out in move-in ready condition for immediate occupancy. Approx. 2,965 sq. ft. located directly across from the elevator lobby on the 3rd floor, the suite is full of natural light facing east overlooking La Cienega Blvd. The suite has a large waiting room, front desk with 3 work stations, private doctors office, private office managers office, 2 billing areas, kitchen, restroom, 5 exam rooms, x-ray rooms, and ample storage.

FOR MORE INFO CALL 310-276-2024

240
OFFICE/STORE FOR LEASE

STORE FOR LEASE / BEVERLY HILLS
"215" S Robertson Blvd (at Charleville)
1,000 ± SF / \$5,600 (incl NNN)
Rear Parking for 4 Cars
(310) 276-2221

288
REAL ESTATE SERVICES

**PROFESSIONAL REAL ESTATE
APPRAISAL SERVICES**

We specialize in appraisals for:

- Trust & Estate Planning
- Divorce Settlements
- Date of Death (DOD) Valuations
- Probate and Tax Purposes
- Pre-sale Valuations

Certified Real Estate Appraiser with 40+ years of
experience providing fair and unbiased valuations.

Call Eric Randle
818-807-5414 • iaprsm@gmail.com

THINKING OF A MOVE?

WHAT ABOUT HAWAII?

Yes, Honolulu is affordable. 300k to
30m. Ask for listings.

Bill: (808) 286-1988 • pacifprop@aol.com



No Texts Please

William "Bill" Einhorn

kwc COASTAL
LIVING
KELLERWILLIAMS

**CONDO FOR SALE
IN WESTWOOD**
Close to Wilshire & Westwood Blvd



1 BEDROOM
**Totally Remodeled
Luxury building with**
24 Hour Guard, Gym,
Pool, Spa, Fish Pond
and Sitting Area, Front
Unit with a Balcony
For Sale \$538,000

Nooshin Shimi
310-498-1090

**EXCLUSIVE
REALTY
INC.**

440
APTS/CONDOS
FOR LEASE

PICO ROBERTSON
1455 S. Wooster Street



**COMPLETELY REMODELED
1BEDROOM, 1BATH**
**GREAT LOCATION
CLOSE TO CENTURY CITY
AND BEVERLY HILLS**

Large Spacious Units, All New Stainless Appliances,
Storage Bin, 1 Car Parking, Quiet Building, Intercom Entry.

**FOR INQUIRIES CONTACT
HAROLD TENNEN 310 850-4600**

**COURIER
CLASSIFIEDS**

408
WANTED
TO RENT

**SENIOR, NO PETS,
NON-SMOKER
IS SEEKING**

2 bedroom ground floor.
Upper unit if
elevator building.
\$2,100 max, depending
on square footage.
apsrei2@gmail.com

440
APTS/CONDOS
FOR LEASE

ENCINO CONDO

Newly remodeled
1BD + 1BA • 810sf

Pool, spa, gym
2 tandem parking,
fridge, stove and
new dishwasher
Ready to move in
\$2,400/MO.

Call 323-650-2164

**FOR
LEASE**

BEVERLY HILLS
221 S. Doheny Dr.

1 BDRM + 1 BA.
2 BDRM + 2 BA.



Bright units w/control
access, pool, elevator,
close to shopping area.
Call 424-877-3839

BEVERLY HILLS

443 S. Oakhurst Dr.

2 BDRM + 2 BA.



Balcony, dishwasher,
elevator, intercom entry,
on-site, laundry, parking.
424-877-3990

BEVERLY HILLS

8725 Clifton Way
1 BDRM + DEN + 2 BA.



control access, park-
ing, intercom entry,
laundry facility, close
to shopping area.
424-877-3828

• BRENTWOOD •



1 BDRM + 1 BATH
• Oversized Units •

Balcony w/ view of golf course,
dishwasher, controlled
access, elevator, pool, prkg.
Close to shopping & school.

Call 424-877-3993

12221 - 12225 San Vicente Blvd.

AVANT GARDE



310.550.0504 | 9612 Brighton Way | Beverly Hills, CA 90210